



A guide to buying
IKEA kitchens

IKEA kitchens

Whether you're looking for a complete kitchen system like METOD or one of our other kitchens, this buying guide includes the products, prices and helpful information you need to choose the kitchen of your dreams.





Sinks and taps.
See page 113 & 121



Working in your kitchen is safer, easier and a lot more enjoyable with good lighting on the worktop, behind glass doors and in drawers.
See page 85

Table of contents

| | |
|---|---|
| <p>Services04</p> <p>IKEA Kitchens..... 06</p> <p>METHOD kitchen system 08</p> <p style="padding-left: 20px;">Doors and drawer fronts10</p> <p style="padding-left: 20px;">Materials.....14</p> <p style="padding-left: 20px;">Cover panels, decorative strips.....25</p> <p style="padding-left: 20px;">Plinths and legs 33</p> <p style="padding-left: 20px;">METHOD cabinets 37</p> <p style="padding-left: 20px;">METHOD interior fittings and organisers 43</p> <p>ENHET kitchen system51</p> <p style="padding-left: 20px;">Complete kitchen 53</p> <p style="padding-left: 20px;">Storage combinations.....61</p> <p style="padding-left: 20px;">Doors and drawer fronts 65</p> <p style="padding-left: 20px;">Cabinets and frames 69</p> <p>KNOXHULT kitchen75</p> | <p>Kitchenettes79</p> <p>Lighting and home electronics85</p> <p>Worktops95</p> <p>Wall panels.....109</p> <p>Sinks 113</p> <p>Kitchen taps..... 121</p> <p>Kitchen organisers..... 127</p> <p>Knobs and handles 135</p> <p>Kitchen accessories 139</p> <p>Guarantee 149</p> <p>Steps to buying an IKEA kitchen 151</p> |
|---|---|

Services

Our broad service offer gives you the freedom to decide how much you want to do yourself and how much you want us to do for you.

Below you'll find all the services that we can offer, and how much each of them costs.



Kitchen planning

Get help with the planning of your new kitchen, by booking an appointment with one of our experts at IKEA. You bring the measurements and drawing or a picture of the area – we help you with inspiration and functional solutions for everything, from the placement of cabinets and appliances, desks and storage to lighting, sinks and wash-basins.



Measuring

If you prefer, we measure the room and check everything, from the placement of windows, doors and power sockets to the material and condition of the walls.



Delivery

Whether you're shopping in store or online, and no matter how big the purchase, we'll do the heavy lifting and bring it to your home or business. We deliver on a day and at a time that suits you.



Removal and recycling

When you buy a kitchen with delivery from us, we are happy to take care of your old one. Whatever can't be reused will be recycled responsibly.



Assembly

All of our products are designed to be assembled by you, but we're more than happy to help put it all together, too.



Kitchen installation

If you want to make things smooth and easy for you - we'll install your new kitchen and coordinate the job from start to finish. We handle all those time-consuming jobs like fitting sinks, taps and worktops. And you can rest assured that the installation of gas/electric appliances is done properly. We also take the packaging with us when your kitchen is in place.

You can do it yourself, but you don't have to



Payment options

We accept many payment methods, including cards and cash. And if you need a little longer to settle your bill, we can help you spread the cost.

What type of kitchen are you looking for?

Whether you're looking for a complete kitchen system like METOD that you can personalise any way you want, or a simpler kitchen that you can install in a day, we have what you're looking for. Here you have three different types of IKEA kitchens to suit different needs and wishes.



METOD kitchen system

Our METOD kitchen system includes cabinets in several different sizes to fit your room layout as well as your kitchen habits. The flexibility of the system offers endless of choices, giving you the freedom to customise a kitchen that's ideal for you and your space. We've also developed an extensive range of kitchen organisers and interior fittings allowing you to quickly see and reach even the things furthest back in the corner cabinets. In addition you have a vast choice in front expressions, worktops, lighting, sinks, taps, knobs, handles and much more to personalise every inch of your kitchen.

See page 08

ENHET kitchen

Whatever shape your homes takes, your ENHET kitchen will fit right in. Find pre-combined and affordable solutions online and assemble them without special tools – they are simply clicked together. ENHET gives you great freedom to personalise your kitchen, offering open and closed storage and doors in different colours, as well as different accessories. **See page 51**



KNOXHULT kitchen

KNOXHULT comes in pre-set modules that you can arrange the way you prefer. Together with our LAGAN appliances you can get a complete kitchen with all the basic functions you need at a low price. Add sink, tap, knobs and handles of your choice to complete the look. The simplicity of the pre-set modules makes the installation so easy that you can have a fully functional kitchen up and running the same day you bring it home from the IKEA store. **See page 75**



Kitchenettes

Not all of us have a lot of space or money for a larger, built-in kitchen - and for different reasons, many of us are just looking for a practical solution that isn't so complicated. Our range of kitchenettes, offers all the ingredients for this very important function in clever, compact designs. You can choose between our basic or modern expressions and add TILLREDA appliances to customize your culinary space according to your needs. It's all there, personal, functional, affordable and easy to install. And there's no need to part from your beloved kitchenettes when you move because you can easily take it with you. Simple as that. **See page 79**



METHOD kitchen system

Endless possibilities

The modular design of METHOD kitchen system is easy to install and gives you endless of possibilities when designing your kitchen. Whether you have a taste for the traditional, love the minimalism in modern style or land somewhere in between, you'll surely find something that fits you.

To become truly beautiful, the kitchen has to be functional and take care of all your kitchen needs, too. With METHOD you have the freedom to get the look you want on the outside and keep everything in perfect

order on the inside. Start by deciding the style of your dream kitchen by choosing the doors and drawer fronts, lighting, worktop, sink, tap, knobs, handles and accessories that you like.

25

The METHOD kitchen system has a 25-year guarantee. Find out more on page 149





METOD doors and drawer fronts

Choose your style!

No matter what your personal style and preference is, make sure to choose a kitchen front you will love for years to come. It is the face of your kitchen, and most likely you will spend many hours in it.

We have a wide range of materials and finishes to choose from to suit your style – no matter what you like! Everything from traditional doors and drawer fronts that are rich in details, to high-gloss and

modern doors and drawer fronts with integrated handles to give you that open clean look – we have it!

The process of choosing the style of your kitchen is all up to you, go for whatever you like – it is your kitchen! We have made sure that all our fronts are durable and of high quality. They all come with a 25-year guarantee to ensure, that whatever you choose it will last for years to come.

25

Kitchen doors have a
25-year guarantee.
Find out more on page 149





Door and drawer front styles



Sleek doors and drawer fronts

Sleek doors offers you straight lines and smooth, easy to clean surfaces, simplicity in its truest form. Choose from a wide variety of finishes, colours and materials.



Frame doors and drawer fronts

Frame doors and drawer fronts are rich in detail, with a crafted look and feel -they create a kitchen with a rustic and traditional look. All our frame door families have a matching glass door.



High-gloss doors and drawer fronts

Glossy surfaces suit everyone from the minimalist to the wild family with kids. Stains are no problem as they are just as easy to wipe clean as they were to make.



Doors and drawer fronts with integrated handles

You might not notice them at first glance – and that's the idea! Integrated handles lend a minimalistic and modern feeling to your kitchen.

Material for kitchen fronts

Kitchen fronts that suit you

Are you looking for a completely new kitchen or are you going to update your existing one? Regardless, we want to help you choose the best kitchen fronts for you and your home. Material, surface treatment and appearance affect your fronts and before you choose, it may be good to think about a few things. What style, colours and patterns do you like? And what are your requirements when it comes to durability, and maintenance? Here we summarise the features and advantages that IKEA kitchen fronts have. All fronts have a 25-year guarantee, so you can be sure to enjoy them for a long time.



Wood – warm and unique

Real wood has a warm and natural expression. Massive wood and wood veneer has its own unique look, since the grain and pattern are different from plank to plank, giving your kitchen a vibrant and natural feel. The colour of the wood deepens and becomes richer over time – and if you take care of your fronts, they will stay beautiful for a long time. The surface can be varnished with clear lacquer, oiled, stained or left untouched to maintain the natural expression.

- + Sturdy and solid.
- + Can be oiled and stained.
- + Colour deepens with time.
- + Unique expression



Stainless steel – durable and professional

Stainless steel is a very durable material. It is an elegant, attractive, and modern material that has stood the test of time and maintained its popularity year after year. Stainless steel fronts give the feeling of a professional restaurant kitchen. It is beautiful in its own right and complements other materials and colours well. Stainless steel is easy to manufacture from recycled metal – and to recycle again.

- + Very resistant to grease, dirt, water, heat and chemicals.
- + Gives your kitchen a professional feeling.
- + Easy to clean and maintain.



Foil – easy-care and versatile

With foil coating, kitchen fronts can have many different expressions – everything from a matte or high-gloss surface to embossed effects and a wide choice of colours and patterns. Foil coating is usually produced from a flexible plastic foil, that is heated and cast over particleboard. The result is a front with an even, smooth and durable surface. Foil with an extra-matte finish may need a little more love and care to remove stains.

- + Scratch resistant.
- + Great variation in appearance.
- + Moisture resistant.
- + The colour does not fade over time.



Lacquered - many colours and a smooth surface

We have lacquered fronts in many different colours, so you can choose one that suits your home best. Lacquered fronts do not need an edging strip, and have a uniform colour and texture over the entire front. They can also be painted or re-varnished in new shades, making it easy to update your kitchen and extend the life of the fronts. Lacquered fronts are produced by spraying paint over compact particleboard. The paint is applied very evenly over the board, and the surface is smooth and easy to wipe dry.

- + Uniform colour and texture over the entire front.
- + Can be repainted.
- + Easy to clean.



Tempered glass - strong and decorative

With glass doors, you can display your favourite objects and add lighting to the cabinet for an extra-cosy touch. The glass in the door is industrially tempered glass, which is a stronger and safer type of glass. It can withstand heavier weight and better resist scratches. If the glass does break, it breaks into smaller and more harmless pieces than ordinary non-tempered glass.

- + Stronger than ordinary glass.
- + Easy to clean.
- + The glass gives a sense of the contents in the cabinet and evokes interest.
- + Combine with lighting in the cabinet for an extra-cosy touch

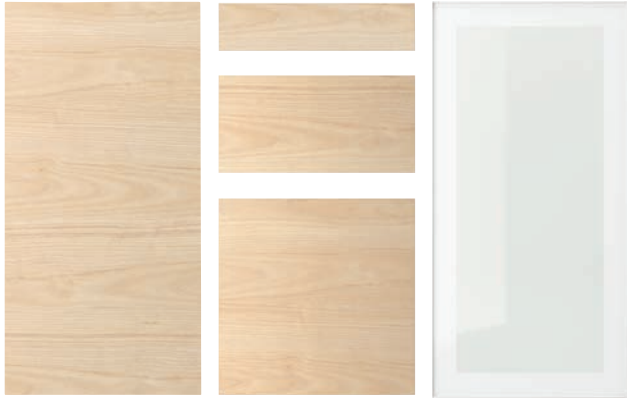


Melamine laminate - durable and easy-care

Laminate offers a lot of possibilities in terms of shape and colour, while at the same time it has a very smooth, hardwearing and durable surface that does not fade over time and is easy to clean. Melamine laminate comprises of an impregnated paper sheet that is pressed together with glue and fixed in place on a particleboard. The edgeband can be made of plastic or wood.

- + Scratch resistant.
- + Easy to clean.
- + Moisture resistant.
- + The colour does not fade over time

Sleek doors and drawer fronts



ASKERSUND
 Colour/design: light ash effect.
 Material: particleboard and melamine foil finish.

ASKERSUND is a blonde ash wood effect door, with a grain pattern that you can see and feel. It creates a light, modern kitchen. Complement with HEJSTA clear glass door.

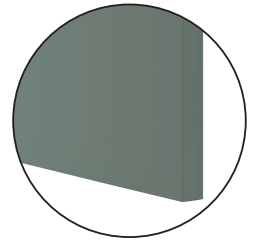
W400×H800 mm 303.318.57



BODARP
 Colour/design: Grey-green.
 Material: Particleboard and recycled foil finish.

Produced in factories using renewable electricity and featuring a foil made of recycled PET bottles, BODARP doors and drawer fronts in matt grey-green creates an open and welcoming kitchen with a modern twist. Complement with HEJSTA clear glass door.

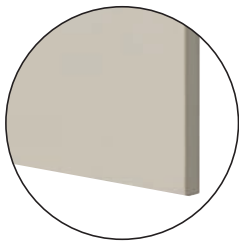
W400×H800 mm 804.355.36



HAVSTORP
 Colour/design: beige.
 Material: fiberboard and painted finish.

HAVSTORP beige is a smooth, sleek door that brings a bright and modern expression to your kitchen. Complement with HEJSTA clear glass door.

W400×H800 mm 504.752.65

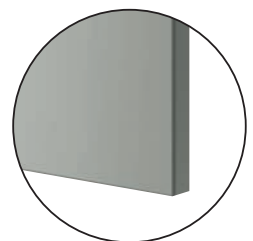


New

HAVSTORP
 Colour/design: light grey.
 Material: fibreboard and painted finish.

HAVSTORP kitchen fronts in timeless light grey finish are defined by clean straight lines and smooth surface that create a neutral and harmonious expression that is easy to personalise.

W400×H800 mm 005.684.79



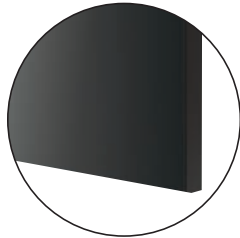


NICKEBO

Colour/design: matt anthracite.
Material: particleboard and foil finish.

NICKEBO fronts with matt black surface create a stylish and modern look. A simple design that you can make your own. Made from recycled wood with a foil finish from mainly recycled plastic. Complement with HEJSTA reeded glass door.

W400×H800 mm 105.377.17



SINARP

Colour/design: brown.
Material: clear lacquered oak veneer and solid oak.

SINARP offers a timeless design with a modern twist, in dark wood tones that are full of character. The solid oak edging elegantly outlines the front adding fine detail and warmth to your kitchen. Complement with SKÖVDE tempered glass doors or HASSLARP accent door.

W400×H800 mm 704.041.54



TISTORP

Colour/design: brown walnut effect.
Material: particleboard and foil finish.

TISTORP door and drawer fronts offer a classic, modern walnut look with smooth surface and simple design. The wooden finish is easy on the eyes, yet makes an impression, adding instant warmth and style. Complement with HEJSTA reeded glass door.

W400×H800 mm 105.584.89



Sleek doors and drawer fronts

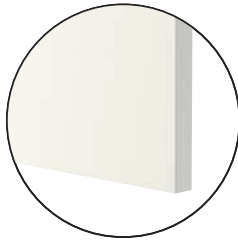


VALLSTENA

Colour/design: white.
Material: particleboard and foil finish.

Simplicity at its best! VALLSTENA kitchen fronts have a smooth clean surface that is easy to coordinate and easy to like. A timeless expression that always feels right.
Complement with HEJSTA clear glass door.

W400×H800 mm 405.416.85



VEDDINGE

Colour/design: white.
Material: fibreboard and painted finish.

VEDDINGE white is a smooth, sleek door that gives your kitchen a bright, modern look.
Complement with HEJSTA clear glass door.

W400×H800 mm 002.054.31



Frame doors and drawer fronts

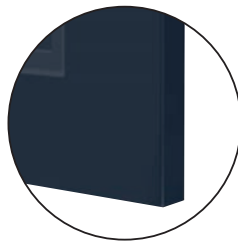


AXSTAD

Colour/design: matt blue.
Material: fibreboard and foil finish.

AXSTAD kitchen door has a matt blue surface with soft lines and an inset panel. The design allows you to use it to create both a modern and traditional kitchen.
Complement with AXSTAD tempered glass doors.

W400×H800 mm 704.752.12



AXSTAD

Colour/design: matt white.
Material: fibreboard and foil finish.

AXSTAD door has a matt, white surface with soft lines and an inset mirror. The design allows you to use it to create both a modern and traditional kitchen.
Complement with AXSTAD tempered glass doors.

W400×H800 mm 304.087.62



Frame doors and drawer fronts



AXSTAD

Colour/design: dark grey.
Material: fibreboard and foil finish.

AXSTAD kitchen door has a matt, dark grey surface with soft lines and an inset panel. The design allows you to use it to create both a modern and traditional kitchen.
Complement with AXSTAD tempered glass doors.

W400×H800 mm 604.543.28



BODBYN

Colour/design: grey.
Material: fibreboard and painted finish.

Rich in detail, BODBYN grey door has a panel that is bevelled on the inside and contoured on the outside. It gives your kitchen a traditional touch.
Complement with BODBYN tempered glass doors.

W400×H800 mm 502.210.37



BODBYN

Colour/design: off-white.
Material: fibreboard and painted finish.

Rich in detail, BODBYN off-white door has a panel that is bevelled on the inside and contoured on the outside. It gives your kitchen a traditional touch.
Complement with BODBYN tempered glass doors.

W400×H800 mm 702.054.80



FORSBACKA

Colour/design: oak.
Material: tinted oak veneer and solid oak.

FORSBACKA kitchen fronts in warm oak veneer welcome you and make you feel right at home. The framed door with bevelled edges creates a classic, traditional character.

W400×H800 mm 205.652.34



Frame doors and drawer fronts



ENKÖPING

Colour/design: white wood effect.
Material: Fibreboard and foil finish.

A classic look in white that feels inviting and will outlast the test of time. ENKÖPING framed fronts are covered in durable foil with a subtle grain structure that gives an authentic, warm wood character.



W400×H800 mm 605.057.66



ENKÖPING

Colour/design: brown walnut effect.
Material: Fibreboard and foil finish.

A classic look in brown walnut that feels inviting and will outlast the test of time. ENKÖPING framed fronts are covered in durable foil with subtle grain structure that gives an authentic wood character.



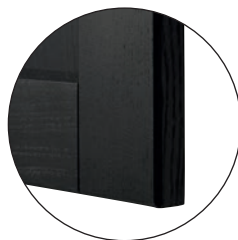
W400×H800 mm 405.165.82



LERHYTTAN

Colour/design: black stained.
Material: Stained, clear lacquered solid wood and wood veneer.

LERHYTTAN door has a distinct traditional character, with a solid wood frame with bevelled edges and an inset veneer panel. LERHYTTAN creates a cosy kitchen with rustic charm. Complement with LERHYTTAN tempered glass doors.



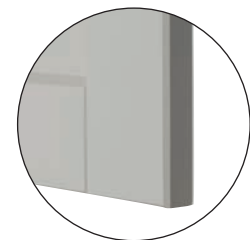
W400×H800 mm 003.560.57



LERHYTTAN

Colour/design: light grey.
Material: Tinted, clear lacquered solid wood and wood veneer.

LERHYTTAN door has a distinct traditional character, with a solid wood frame with bevelled edges and an inset veneer panel. LERHYTTAN creates a cosy kitchen with rustic charm. Complement with LERHYTTAN tempered glass doors.



W400×H800 mm 503.524.29





STENSUND

Colour/design: beige.
Material: fibreboard and painted finish.

STENSUND series offers a touch of country living with framed fronts and grooved panels that create a warm, crafted look. Complement with STENSUND tempered glass doors.



W400×H800 mm 004.505.59



STENSUND

Colour/design: light green.
Material: fibreboard and painted finish.

STENSUND series offers a touch of country living with framed fronts and grooved panels that create a warm, crafted look. Complement with STENSUND tempered glass doors.



W400×H800 mm 505.239.16



High-gloss doors and drawer fronts



STENSUND

Colour/design: white.
Material: fibreboard and painted finish.

STENSUND series offers a touch of country living with framed fronts and grooved panels that create a warm, crafted look. Complement with STENSUND tempered glass doors.



W400×H800 mm 004.505.59



RINGHULT

Colour/design: high-gloss white.
Material: particleboard and high-gloss foil finish.

RINGHULT white doors have sleek, straight lines and a high-gloss surface that's durable and easy to clean. RINGHULT brings a bright, modern look to your kitchen. Complement with HEJSTA clear glass door.



W400×H800 mm 302.050.95



High-gloss doors and drawer fronts

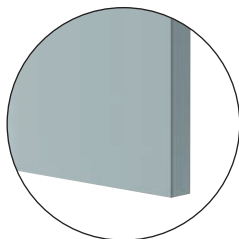


KALLARP

Colour/design: high-gloss light grey-blue.
Material: particleboard with foil finish.

KALLARP is a high-gloss drawer front with sleek, straight lines and brings a fresh, modern look to your kitchen.
Complement with HEJSTA clear glass door.

W400×H800 mm 405.201.45

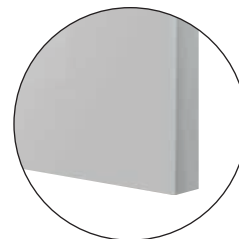


RINGHULT

Colour/design: high-gloss light grey.
Material: particleboard and high-gloss foil finish.

RINGHULT light grey doors have sleek, straight lines and a high-gloss surface that's durable and easy to clean. RINGHULT brings a bright, modern look to your kitchen.
Complement with HEJSTA clear glass door.

W400×H800 mm 403.271.38



Doors and drawer fronts with integrated handles



VOXTORP

Colour/design: matt white.
Material: particleboard and foil finish.

VOXTORP is a smooth, matt door with integrated handles. It brings clean lines and an open, modern look to your kitchen.
Complement with HEJSTA clear glass door.

W400×H800 mm 402.731.78



VOXTORP

Colour/design: high-gloss white.
Material: fibreboard and high-gloss foil finish.

VOXTORP is a smooth, high-gloss door with integrated handles. It brings clean lines and an open, modern look to your kitchen.
Complement with HEJSTA clear glass door.

W400×H800 mm 203.974.86



Doors and drawer fronts with integrated handles

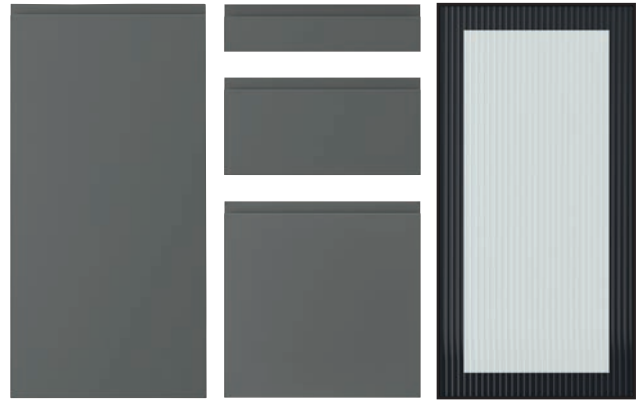
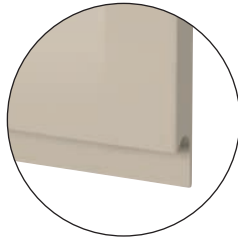


VOXTORP

Colour/design: high-gloss light beige.
Material: fibreboard and high-gloss foil finish

VOXTORP is a smooth, high-gloss door with integrated handles. It brings clean lines and an open, modern look to your kitchen.
Complement with HEJSTA clear glass door.

W400×H800 mm 503.211.50

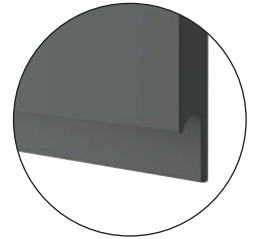


VOXTORP

Colour/design: dark grey.
Material: particleboard and foil finish.

VOXTORP is a smooth door with integrated handles. It brings clean lines and an open, modern look to your kitchen.
Complement with HEJSTA reeded glass door.

W400×H800 mm 804.540.92



New

VOXTORP

Colour/design: oak effect.
Material: particleboard and foil finish.

VOXTORP is a oak effect door with integrated handles. It brings clean lines and an open, warm and modern look to your kitchen.
Complement with HEJSTA reeded glass door.

W400×H800 mm 105.591.44

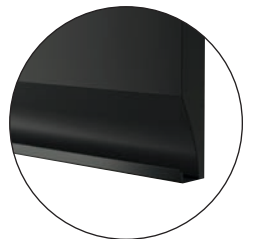


UPPLÖV

Colour/design: matt anthracite.
Material: Particleboard with foil finish and aluminium.

UPPLÖV kitchen fronts in matt black offer a modern and sophisticated look enhanced with chamfered edges and same-tone integrated handles. Elegant and graphic details that feel sleek through and through. Complement with HEJSTA reeded glass door.

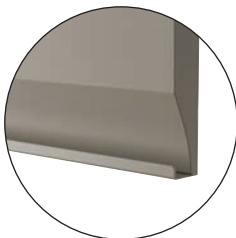
W400×H800 mm 805.267.58





UPPLÖV
 Colour/design: matt dark beige.
 Material: Particleboard with foil finish and aluminium.

UPPLÖV kitchen fronts in matt beige offer a modern and sophisticated look enhanced with chamfered edges and same-tone integrated handles. Elegant and graphic details that feel sleek through and through. Complement with HEJSTA clear glass door.



W400×H800 mm 704.704.79



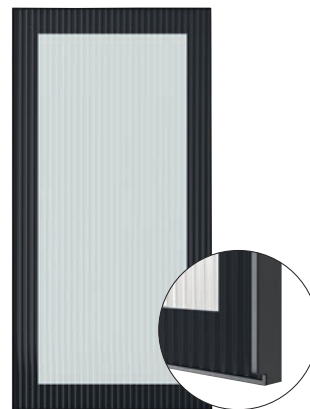
Glass doors



HEJSTA
 Colour/design: white/clear glass.
 Material: Aluminium and tempered glass.

Create a personal and inviting feeling with HEJSTA glass door in white. Show your favourite items and add lighting for ambience. A classic, modern look with metal frame and integrated handle.

W400×H800 mm 005.266.39



HEJSTA
 Colour/design: anthracite /reeded glass.
 Material: Aluminium and tempered glass.

Create a personal and inviting feeling with HEJSTA glass door in black. The reeded glass hints at what's inside the cabinet and adds an element of interest. Pairs well with lighting for ambience.

W400×H800 mm 805.266.40



Accent doors

Accent doors are a great way to get a more personal look by adding a contrast, a pattern or a splash of colour. They're designed to complement the other doors in your kitchen, which means they don't come in as many sizes as most fronts.



HASSLARP
 Colour/design: brown/patterned.
 Material: clear lacquered oak veneer and solid oak.

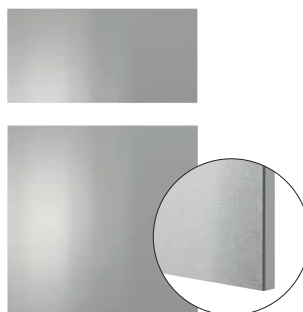
The herringbone patterned oak veneer with characteristic details gives your kitchen a unique accent. Designed to match the SINARP series, but can also be paired with solid-coloured doors for a modern look.

W400×H800 mm 904.047.80



Drawer fronts

Our drawer front families only comes with drawer fronts and no doors. They are designed to complement the doors in our range and come in a limited amount of sizes.



VÅRSTA
 Colour/design: stainless steel.
 Material: particleboard and stainless steel

VÅRSTA fronts made with hardwearing, stainless steel bring an industrial, restaurant feel into your kitchen and will inspire the chef inside of you to whip up many marvellous meals just like a pro.

W400×H800 mm 304.105.95



FRÖJERED
 Colour/design: light bamboo.
 Material: clear lacquered bamboo.

Vibrant and warm with a "wow" feel. FRÖJERED fronts are made of natural bamboo - a sustainable and hard-wearing material that's perfect in the kitchen. Integrated handles enhance the clean, modern look.

W400×H800 mm 304.416.53



METHOD

cover panels, decorative strips, plinths and legs

Add the finishing touches

Whether you've decided to go for a more traditional style with lots of drawers and decorative elements, or a sleek modern, more minimalistic approach, there are still finishing touches for you to add to make your kitchen stunning.

Enhance your style with uniform cover panels, decorative strips, legs and plinths. Or, you can be a bit bold and go for a finish that contrasts with your doors and drawers. It's all up to you.





Cover panel



Decorative plinth



Decorative strip



Plinth with cut-out

Cover panels

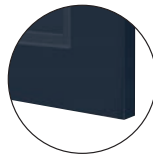
Choose a cover panel in the same finish as your door for a uniform expression, or mix and match to suit your taste.

ASKERSUND cover panel, light ash effect.



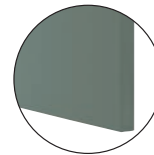
| Available sizes, width×height | |
|-------------------------------|------------|
| 39×86 cm | 603.318.46 |
| 39×106 cm | 103.318.44 |
| 39×240 cm | 803.318.45 |
| 62×80 cm | 003.318.49 |
| 62×220 cm | 403.318.47 |
| 62×240 cm | 203.318.48 |

AXSTAD cover panel, matt blue.



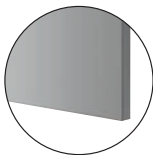
| Available sizes, width×height | |
|-------------------------------|------------|
| 39×86 cm | 204.752.43 |
| 39×106 cm | 604.752.41 |
| 39×240 cm | 404.752.42 |
| 62×80 cm | 504.752.46 |
| 62×220 cm | 004.752.44 |
| 62×240 cm | 704.752.45 |

BODARP cover panel, grey-green.



| Available sizes, width×height | |
|-------------------------------|------------|
| 39×86 cm | 604.355.23 |
| 39×106 cm | 004.355.21 |
| 39×240 cm | 804.355.22 |
| 62×80 cm | 904.355.26 |
| 62×220 cm | 404.355.24 |
| 62×240 cm | 104.355.25 |

BODBYN cover panel, grey.



| Available sizes, width×height | |
|-------------------------------|------------|
| 39×86 cm | 102.344.28 |
| 39×106 cm | 302.210.62 |
| 39×240 cm | 902.210.64 |
| 62×80 cm | 102.210.63 |
| 62×220 cm | 102.344.52 |
| 62×240 cm | 502.210.61 |

ENKÖPING cover panel, white wood effect.



| Available sizes, width×height | |
|-------------------------------|------------|
| 39×83 cm | 205.057.54 |
| 39×103 cm | 605.057.52 |
| 39×240 cm | 405.057.53 |
| 62×80 cm | 505.057.57 |
| 62×220 cm | 905.057.55 |
| 62×240 cm | 705.057.56 |

ENKÖPING cover panel, brown walnut effect.



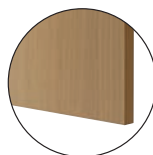
| Available sizes, width×height | |
|-------------------------------|------------|
| 39×83 cm | 105.165.69 |
| 39×103 cm | 505.165.67 |
| 39×240 cm | 305.165.68 |
| 62×80 cm | 305.165.73 |
| 62×220 cm | 905.165.70 |
| 62×240 cm | 705.165.71 |

SINARP cover panel, brown.



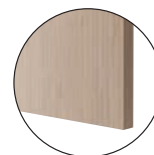
| Available sizes, width×height | |
|-------------------------------|------------|
| 39×86 cm | 004.041.43 |
| 39×106 cm | 404.041.41 |
| 39×240 cm | 204.041.42 |
| 62×80 cm | 304.041.46 |
| 62×220 cm | 804.041.44 |
| 62×240 cm | 504.041.45 |

FORSBACKA cover panel, oak.



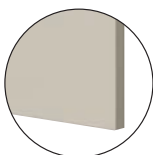
| Available sizes, width×height | |
|-------------------------------|------------|
| 39×83 cm | 705.652.22 |
| 39×105 cm | 105.652.20 |
| 39×240 cm | 905.652.21 |
| 62×80 cm | 305.652.24 |
| 62×220 cm | 005.653.29 |
| 62×240 cm | 505.652.23 |

FRÖJERED cover panel, light bamboo.



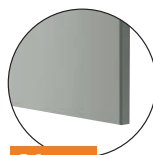
| Available sizes, width×height | |
|-------------------------------|------------|
| 39×80 cm | 104.416.25 |
| 62×80 cm | 904.416.31 |

HAVSTORP cover panel, beige.



| Available sizes, width×height | |
|-------------------------------|------------|
| 39×86 cm | 504.752.51 |
| 39×106 cm | 904.752.49 |
| 39×240 cm | 704.752.50 |
| 62×80 cm | 304.752.85 |
| 62×220 cm | 104.752.53 |
| 62×240 cm | 904.752.54 |

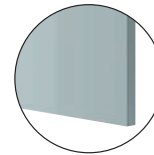
HAVSTORP cover panel, light grey.



New

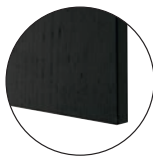
| Available sizes, width×height | |
|-------------------------------|------------|
| 39×86 cm | 705.684.66 |
| 39×106 cm | 205.684.64 |
| 39×240 cm | 905.684.65 |
| 62×80 cm | 105.684.69 |
| 62×220 cm | 505.684.67 |
| 62×240 cm | 305.684.68 |

KALLARP cover panel, high gloss light grey-blue.



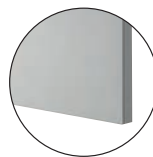
| Available sizes, width×height | |
|-------------------------------|------------|
| 39×86 cm | 405.201.31 |
| 39×106 cm | 805.201.29 |
| 39×240 cm | 605.201.30 |
| 62×80 cm | 805.201.34 |
| 62×220 cm | 205.201.32 |
| 62×240 cm | 005.201.33 |

LERHYTTAN cover panel, black stained.



| Available sizes, width×height | |
|-------------------------------|------------|
| 39×85 cm | 303.560.46 |
| 39×105 cm | 103.560.85 |
| 39×240 cm | 503.560.45 |
| 62×80 cm | 103.560.90 |
| 62×220 cm | 103.560.47 |
| 62×240 cm | 303.560.89 |

LERHYTTAN cover panel, light grey.



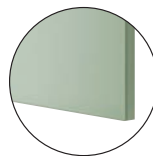
| Available sizes, width×height | |
|-------------------------------|------------|
| 39×85 cm | 103.523.51 |
| 39×105 cm | 503.523.49 |
| 39×240 cm | 303.523.50 |
| 62×80 cm | 503.523.54 |
| 62×220 cm | 903.523.52 |
| 62×240 cm | 703.523.53 |

STENSUND cover panel, beige.



| Available sizes, width×height | |
|-------------------------------|------------|
| 39×83 cm | 104.531.66 |
| 39×103 cm | 604.531.64 |
| 39×240 cm | 304.531.65 |
| 62×80 cm | 504.531.69 |
| 62×220 cm | 904.531.67 |
| 62×240 cm | 704.531.68 |

STENSUND cover panel, light green.



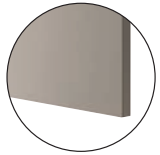
| Available sizes, width×height | |
|-------------------------------|------------|
| 39×83 cm | 305.238.99 |
| 39×103 cm | 705.238.97 |
| 39×240 cm | 505.238.98 |
| 62×80 cm | 505.239.02 |
| 62×220 cm | 905.239.00 |
| 62×240 cm | 705.239.01 |

STENSUND cover panel, white.



| Available sizes, width×height | |
|-------------------------------|------------|
| 39×83 cm | 904.505.45 |
| 39×103 cm | 404.505.43 |
| 39×240 cm | 204.505.44 |
| 62×80 cm | 304.505.48 |
| 62×220 cm | 704.505.46 |
| 62×240 cm | 504.505.47 |

UPPLÖV cover panel, matt dark beige.



| Available sizes, width×height | |
|-------------------------------|------------|
| 39×83 cm | 604.704.65 |
| 39×103 cm | 104.704.63 |
| 39×240 cm | 904.704.64 |
| | |
| 62×80 cm | 004.704.68 |
| 62×220 cm | 404.704.66 |
| 62×240 cm | 204.704.67 |

VOXTORP cover panel, oak effect.



New

| Available sizes, width×height | |
|-------------------------------|------------|
| 39×86 cm | 105.591.15 |
| 39×106 cm | 005.591.11 |
| 39×240 cm | 605.591.13 |
| | |
| 62×80 cm | 905.591.21 |
| 62×220 cm | 705.591.17 |
| 62×240 cm | 305.591.19 |

VOXTORP cover panel, high-gloss light beige.



| Available sizes, width×height | |
|-------------------------------|------------|
| 39×86 cm | 803.211.39 |
| 39×106 cm | 203.211.37 |
| 39×240 cm | 003.211.38 |
| | |
| 62×80 cm | 003.211.43 |
| 62×220 cm | 403.211.41 |
| 62×240 cm | 203.211.42 |

RINGHULT cover panel, high-gloss light grey.



| Available sizes, width×height | |
|-------------------------------|------------|
| 39×86 cm | 703.271.27 |
| 39×106 cm | 103.271.25 |
| 39×240 cm | 903.271.26 |
| | |
| 62×80 cm | 103.271.30 |
| 62×220 cm | 503.271.28 |
| 62×240 cm | 303.271.29 |

VÅRSTA cover panel, stainless steel.



| Available sizes, width×height | |
|-------------------------------|------------|
| 39×80 cm | 804.105.88 |
| 62×80 cm | 604.105.89 |

VÅRSTA cover panel with legs, stainless steel.



| Available sizes, width×height | |
|-------------------------------|------------|
| 39×80 cm | 804.106.06 |
| 62×80 cm | 304.106.04 |

FÖRBÄTTRA cover panels

Our FÖRBÄTTRA white, dark grey, matt anthracite and walnut effect cover panels are developed to fit all our white, dark grey, matt anthracite, walnut effect doors

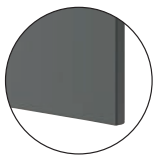
and drawer fronts. Choose a FÖRBÄTTRA in the same colour and finish as your door for a perfect match.

FÖRBÄTTRA cover panel, brown walnut.



| Available sizes, width×height | |
|-------------------------------|------------|
| 39×83 cm | 805.584.76 |
| 39×103 cm | 505.584.73 |
| 39×240 cm | 005.584.75 |
| | |
| 62×80 cm | 205.584.79 |
| 62×220 cm | 605.584.77 |
| 62×240 cm | 405.584.78 |

FÖRBÄTTRA cover panel, dark grey.



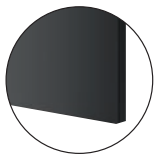
| Available sizes, width×height | |
|-------------------------------|------------|
| 39×86 cm | 304.540.80 |
| 39×106 cm | 704.540.78 |
| 39×240 cm | 504.540.79 |
| | |
| 62×80 cm | 704.540.83 |
| 62×220 cm | 104.540.81 |
| 62×240 cm | 904.540.82 |

FÖRBÄTTRA cover panel, high-gloss white.



| Available sizes, width×height | |
|-------------------------------|------------|
| 39×86 cm | 303.974.76 |
| 39×106 cm | 803.974.74 |
| 39×220 cm | 503.974.75 |
| | |
| 62×80 cm | 703.974.79 |
| 62×220 cm | 103.974.77 |
| 62×240 cm | 903.974.78 |

FÖRBÄTTRA cover panel, matt anthracite.



| Available sizes, width×height | |
|-------------------------------|------------|
| 39×83 cm | 205.267.37 |
| 39×103 cm | 605.267.35 |
| 39×240 cm | 405.267.36 |
| | |
| 62×80 cm | 205.267.42 |
| 62×220 cm | 005.267.38 |
| 62×240 cm | 805.267.39 |

FÖRBÄTTRA cover panel, matt white.



| Available sizes, width×height | |
|-------------------------------|------------|
| 39×86 cm | 604.176.61 |
| 39×106 cm | 004.176.59 |
| 39×240 cm | 804.176.60 |
| | |
| 62×80 cm | 004.176.64 |
| 62×220 cm | 404.176.62 |
| 62×240 cm | 204.176.63 |

FÖRBÄTTRA cover panel, off-white.



| Available sizes, width×height | |
|-------------------------------|------------|
| 39×86 cm | 402.344.36 |
| 39×106 cm | 302.057.26 |
| 39×240 cm | 102.057.27 |
| | |
| 62×80 cm | 902.057.28 |
| 62×220 cm | 402.344.60 |
| 62×240 cm | 502.057.25 |

FÖRBÄTTRA cover panel, white.



| Available sizes, width×height | |
|-------------------------------|------------|
| 39×86 cm | 102.978.83 |
| 39×106 cm | 502.978.81 |
| 39×240 cm | 302.978.82 |
| | |
| 62×80 cm | 402.978.86 |
| 62×220 cm | 902.978.84 |
| 62×240 cm | 602.978.85 |

Decorative strips

Decorative strips provides the finishing touch to your kitchen. They come in many different styles, but we have something for all our door and drawer families. Use them to tie your style together, hide lighting or just as a decorative element.

You can choose how to mount them on your cabinets. Below we show the entire range and some different ways of mounting them both above as mouldings and below your cabinet, either wrapped around the whole cabinet or just between your cover panels.

ASKERSUND decorative strip rounded,
light ash effect.

221x6 cm 803.318.50



AXSTAD decorative strip rounded,
matt blue.

221x6 cm 304.752.47



BODARP decorative strip rounded,
grey-green.

221x6 cm 704.355.27



BODBYN decorative strip contoured,
grey.

221x6 cm 602.210.65



BODBYN decorative strip contoured,
off-white.

221x6 cm 804.177.59



ENKÖPING deco strip,
white wood effect.

221x3 cm 805.057.51



ENKÖPING deco strip,
walnut effect.

221x3 cm 705.165.66



FORSBACKA deco strip,
oak effect.

221×2.9 cm 006.652.25



HAVSTORP deco strip rounded,
beige.

221×6 cm 604.752.55



HAVSTORP deco strip rounded,
light grey.

221×6 cm 905.684.70

New



KALLARP decorative strip,
high-gloss light grey-blue.

221×6 cm 000.000.00



LERHYTTAN decorative strip rounded,
black stained.

221×4.3 cm 903.560.91



LERHYTTAN decorative strip rounded,
light grey.

221×4.3 cm 903.523.71



RINGHULT decorative strip rounded,
high-gloss light grey.

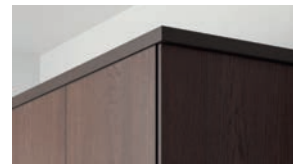
221×6 cm 903.271.31



Decorative strips

SINARP decorative strip rounded,
brown.

221x6 cm 104.041.47



STENSUND decorative strip,
beige.

221x3 cm 304.531.70



STENSUND decorative strip,
light green.

221x3 cm 305.239.03



STENSUND decorative strip,
white.

221x3 cm 104.505.49



UPPLÖV decorative strip,
matt dark beige.

221x1 cm 604.704.70



VOXTORP decorative strip rounded,
high-gloss light beige.

221x6 cm 803.211.44



VOXTORP decorative strip rounded,
oak effect.

221x6 cm 305.591.24

New



FÖRBÄTTRA decorative strips

Our FÖRBÄTTRA white, grey, anthracite and walnut effect decorative strips are developed to fit all our white, dark grey, matt anthracite and walnut effect doors and

drawer fronts. Choose a FÖRBÄTTRA in the same colour and finish as your door for a perfect match.

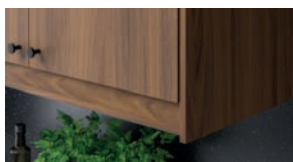
FÖRBÄTTRA decorative strip rounded,
dark grey.

221×6 cm 504.540.84



FÖRBÄTTRA decorative strip,
brown walnut effect.

221×2.8 cm 005.584.80



FÖRBÄTTRA decorative strip rounded,
high-gloss white.

221×6 cm 503.974.80



FÖRBÄTTRA decorative strip,
matt anthracite.

221×6 cm 005.267.43



FÖRBÄTTRA decorative strip rounded,
matt white.

221×6 cm 704.176.65



FÖRBÄTTRA decorative strip rounded,
off-white.

221×6 cm 702.069.60



FÖRBÄTTRA decorative strip rounded,
white.

221×6 cm 202.978.87



Plinths and legs

Choose between a regular or a decorative plinth to cover the gap between your cabinet and the floor. As an alternative to a plinth you can also choose to put legs on your base and high cabinets.

BODBYN, grey.



Plinth
220×8 cm 302.807.73



Decorative plinth
220×8 cm 502.613.06



Decorative plinth with cut out
66×8 cm 102.930.74



Leg, 2-pack
8 cm 102.613.08

LERHYTTAN black stained.



Plinth
220×8 cm 403.560.84



Leg for decorative plinth
103.978.06



Corner leg for decorative plinth.
2-pack 204.032.27

LERHYTTAN light grey.



Plinth
220×8 cm 403.560.84



Leg for decorative plinth
903.978.07



Corner leg for decorative plinth.
2-pack 404.032.31

ASKERSUND ligh ash effect.



Plinth
220×8 cm 903.318.78

AXSTAD matt blue.



Plinth
220×8 cm 104.752.48

BODARP grey-green.



Plinth
220×8 cm 204.355.58

ENKÖPING brown walnut effect.



Plinth
220×8 cm 005.057.93

FORSBACKA oak effect.



Plinth
220×8 cm 705.652.60

HAVSTORP beige.



Plinth
220×8 cm 404.752.56

HAVSTORP light grey.



New

Plinth
220×8 cm 005.711.51

KALLARP high-gloss light grey-blue.



Plinth
220×8 cm 805.201.67

RINGHULT high-gloss light grey.



Plinth
220×8 cm 603.271.56

STENSUND beige.



Plinth
220×8 cm 104.532.08

STENSUND light green.



Plinth
220×8 cm 905.240.23

SINARP brown.



Plinth
220×8 cm 004.041.81

UPPLÖV matt dark beige.



Plinth
220×8 cm 704.705.06

VOXTORP high-gloss light beige.



Plinth
220×8 cm 703.211.68

VOXTORP oak effect.



New

Plinth
220×8 cm 605.591.65

VÄRSTA stainless steel colour.



Plinth
220×8 cm 404.351.47

Plinths and legs

FÖRBÄTTRA plinths and legs

Our plinths white, dark grey, matt anthracite and walnut effect plinths and legs are developed to fit all our white, dark grey, anthracite, walnut effect doors

and drawers fronts. Choose a FÖRBÄTTRA in the same colour and finish as your door for a perfect match.

FÖRBÄTTRA off-white.



Plinth
220x8 cm 602.807.76



Decorative plinth
220x8 cm 302.613.07



Decorative plinth with cut out
66x8 cm 402.930.77



Leg, 2-pack.
8 cm 902.613.09

FÖRBÄTTRA dark grey.



FÖRBÄTTRA white.



Plinth
220x8 cm 403.275.05

FÖRBÄTTRA high-gloss white.



Plinth
220x8 cm 703.975.06

FÖRBÄTTRA matt white.



Plinth
220x8 cm 504.176.66

FÖRBÄTTRA matt anthracite.



Plinth
220x8 cm 705.267.87

FÖRBÄTTRA brown walnut effect.



Plinth
220x8 cm 605.585.09

Legs



METHOD leg, 8 cm, 4-p. May be completed with plinth.

402.055.99



CAPITA leg, 8 cm, 4-p.

Stainless steel 302.443.46



CAPITA leg, 16 cm, 4-p.

Stainless steel 102.678.95



UTBY leg, stainless steel.

88 cm 305.036.60



FÖRBÄTTRA
Decorative plinth.
220×8 cm, off-white,
302.613.07

METOD cabinets

Modular cabinets that fits your space

What does your dream kitchen look like? How much time will you spend in it and how will you use it? When it comes to kitchens, we're all different. We have different dreams, different needs and different preconditions. To meet this diversity, what could be better than a highly flexible kitchen system with

cabinets that can suit everyone, and be planned in everywhere? Whatever the size of your home or family, with cabinets in different sizes, drawers with endless possibilities and interior organisers made to match, you can turn the kitchen of your dreams into the kitchen in your home.

25

The METOD kitchen comes with a free 25-year guarantee. Find out more on page 149



On this page you can see all available METHOD cabinets and their sizes. Choose and mix them to fit the architecture of your room as well as your own needs.

METHOD base cabinet frames



| | |
|--------------------|------------|
| 30×37×80 cm | |
| White | 204.171.49 |
| Wood effect black | 604.171.85 |



| | |
|--------------------|------------|
| 20×60×80 cm | |
| White | 302.125.62 |
| Wood effect black | 002.125.68 |



| | |
|--------------------|------------|
| 40×37×80 cm | |
| White | 302.056.32 |
| Wood effect black | 802.056.44 |



| | |
|--------------------|------------|
| 30×60×80 cm | |
| White | 504.171.95 |
| Wood effect black | 104.172.82 |



| | |
|--------------------|------------|
| 60×37×80 cm | |
| White | 502.056.31 |
| Wood effect black | 602.056.35 |



| | |
|--------------------|------------|
| 40×60×80 cm | |
| White | 802.134.32 |
| Wood effect black | 702.056.30 |



| | |
|--------------------|------------|
| 80×37×80 cm | |
| White | 102.056.28 |
| Wood effect black | 902.056.29 |



| | |
|--------------------|------------|
| 60×60×80 cm | |
| White | 502.056.26 |
| Wood effect black | 902.056.34 |



| | |
|--------------------|------------|
| 80×60×80 cm | |
| White | 102.056.33 |
| Wood effect black | 702.056.25 |

METHOD corner base cabinets

You find UTRUSTA corner carousels designed to fit perfectly inside the corner cabinet on page 46



| | |
|--------------------|------------|
| 88×88×80 cm | |
| White | 202.055.19 |
| Wood effect black | 402.055.18 |



| | |
|---------------------|------------|
| 128×68×80 cm | |
| White | 602.055.17 |
| Wood effect black | 702.055.12 |

METHOD high cabinet frames



| | |
|---------------------|------------|
| 40×37×200 cm | |
| White | 102.125.63 |
| Wood effect black | 202.125.72 |



| | |
|---------------------|------------|
| 60×37×200 cm | |
| White | 702.125.60 |
| Wood effect black | 602.125.70 |



| | |
|---------------------|------------|
| 40×60×200 cm | |
| White | 902.125.59 |
| Wood effect black | 402.125.71 |



| | |
|---------------------|------------|
| 60×60×200 cm | |
| White | 602.125.65 |
| Wood effect black | 802.125.69 |



| | |
|---------------------|------------|
| 80×37×200 cm | |
| White | 502.125.61 |
| Wood effect black | 002.125.73 |



| | |
|---------------------|------------|
| 40×60×220 cm | |
| White | 102.125.58 |
| Wood effect black | 402.125.66 |



| | |
|---------------------|------------|
| 60×60×220 cm | |
| White | 902.125.64 |
| Wood effect black | 202.125.67 |

METHOD top cabinets

See all our appliances in the Appliance buying guide available at your local IKEA store and on www.IKEA.co.uk



| | |
|--------------------|------------|
| 40×60×40 cm | |
| White | 602.240.78 |
| Wood effect black | 502.240.74 |



| | |
|---|------------|
| Fridge/freezer top cabinet frame 60×60×40 cm | |
| White | 402.055.37 |
| Wood effect black | 402.055.56 |



| | |
|---|------------|
| Fridge/freezer top cabinet frame 60×60×60 cm | |
| White | 002.055.39 |
| Wood effect black | 202.055.24 |

METOD high cabinets for built-in

See all our appliances in the Appliance buying guide available at your local **IKEA store** and on www.IKEA.co.uk



For fridge/oven
60×60×200 cm

| | |
|-------------------|------------|
| White | 902.135.68 |
| Wood effect black | 702.135.74 |



For fridge/oven
60×60×220 cm

| | |
|-------------------|------------|
| White | 502.135.70 |
| Wood effect black | 202.135.76 |



For fridge/oven 60×60×140 cm

| | |
|-------------------|------------|
| White | 203.854.74 |
| Wood effect black | 103.854.79 |

METOD wall cabinet frame for built-in extractor hood

See all our appliances in the Appliance buying guide available at your local **IKEA store** and on www.IKEA.co.uk



60×37×60 cm

| | |
|-------|------------|
| White | 505.476.39 |
|-------|------------|



60×37×80 cm

| | |
|-------|------------|
| White | 305.476.40 |
|-------|------------|



60×37×100 cm

| | |
|-------|------------|
| White | 105.476.41 |
|-------|------------|



80×37×60 cm

| | |
|-------|------------|
| White | 905.476.42 |
|-------|------------|



80×37×80 cm

| | |
|-------|------------|
| White | 705.476.43 |
|-------|------------|



80×37×100 cm

| | |
|-------|------------|
| White | 005.476.46 |
|-------|------------|

METOD corner wall cabinets

You find **UTRUSTA** corner carousels designed to fit perfectly inside the corner cabinet on [page 46](#)



68×68×60 cm

| | |
|-------------------|------------|
| White | 002.125.54 |
| Wood effect black | 602.056.59 |



68×68×80 cm

| | |
|-------------------|------------|
| White | 202.056.61 |
| Wood effect black | 802.056.58 |



68×68×100 cm

| | |
|-------------------|------------|
| White | 702.152.81 |
| Wood effect black | 902.152.80 |

METOD wall cabinets



20×37×80 cm

| | |
|-------------------|------------|
| White | 802.521.12 |
| Wood effect black | 602.521.13 |



30×37×60 cm

| | |
|-------------------|------------|
| White | 404.210.51 |
| Wood effect black | 104.210.57 |



30×37×80 cm

| | |
|-------------------|------------|
| White | 704.172.98 |
| Wood effect black | 604.173.07 |



40×37×40 cm

| | |
|-------------------|------------|
| White | 102.055.29 |
| Wood effect black | 302.055.52 |



40×37×60 cm

| | |
|-------------------|------------|
| White | 102.055.34 |
| Wood effect black | 502.055.46 |



40×37×80 cm

| | |
|-------------------|------------|
| White | 702.055.31 |
| Wood effect black | 502.055.51 |



40×37×100 cm

| | |
|-------------------|------------|
| White | 502.055.32 |
| Wood effect black | 402.055.42 |



60×37×40 cm

| | |
|-------------------|------------|
| White | 302.055.33 |
| Wood effect black | 702.055.50 |



60×37×60 cm

| | |
|-------------------|------------|
| White | 802.055.35 |
| Wood effect black | 702.055.45 |



60×37×80 cm

| | |
|-------------------|------------|
| White | 302.055.28 |
| Wood effect black | 602.055.41 |



60×37×100 cm

| | |
|-------------------|------------|
| White | 202.055.38 |
| Wood effect black | 902.055.49 |



80×37×40 cm

| | |
|-------------------|------------|
| White | 802.055.40 |
| Wood effect black | 002.055.48 |



80×37×60 cm

| | |
|-------------------|------------|
| White | 602.055.22 |
| Wood effect black | 602.055.55 |



80×37×80 cm

| | |
|-------------------|------------|
| White | 702.055.26 |
| Wood effect black | 102.055.48 |



80×37×100 cm

| | |
|-------------------|------------|
| White | 902.055.30 |
| Wood effect black | 302.055.47 |

Open storage

Create a nice break in a row of cabinets with doors using open cabinets. Your kitchen becomes more personal and you can have often used items like cookbooks within arm's reach.



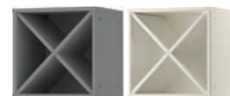
TORNVIKEN open cabinet.

| | |
|-------------|------------|
| 20×37×40 cm | |
| Grey | 603.589.92 |
| White | 203.589.65 |
| 20×37×60 cm | |
| Grey | 403.589.93 |
| White | 603.589.68 |
| 20×37×80 cm | |
| Grey | 203.589.94 |
| White | 203.589.70 |



TORNVIKEN box, 16×34×15 cm. A flexible box that you can place in TORNVIKEN open cabinet and also lift out and place somewhere – like on the worktop or the dining table.

| | |
|-------|------------|
| Grey | 003.589.66 |
| White | 003.589.71 |



TORNVIKEN wine shelf, 40×37×40 cm.

| | |
|-------|------------|
| Grey | 803.589.67 |
| White | 803.589.72 |



VADHOLMA open storage, brown/stained ash.

| | |
|-------------|--|
| 20×37×40 cm | |
| 603.743.36 | |
| 20×37×60 cm | |
| 603.743.41 | |
| 20×37×80 cm | |
| 203.743.38 | |



VADHOLMA drawer unit, 40×37×40 cm. Smooth-running drawers with stop, self-closing the last centimetres. You can view and access what's inside, as the drawers can be pulled out all the way.

| | |
|-------------------|------------|
| Brown/stained ash | 503.743.32 |
|-------------------|------------|



VADHOLMA wine shelf, 40×37×40 cm.

| | |
|-------------------|------------|
| Brown/stained ash | 903.743.30 |
|-------------------|------------|

Small appliances storage



TITTEBO tambour storage for small appliances, black.

| | |
|-------|------------|
| 60 cm | 205.502.75 |
|-------|------------|

TITEBO

Tambour storage for small appliances,
black. 60 cm. 205.502.75



METOD

interior fittings and organisers

Hidden helpers

With METOD interior fittings and organisers, you can get the look you want on the outside without revealing what's inside. The cabinets can be hiding all sorts of kitchen surprises. Behind a door you can find pull-out organisers for your cleaning equipment, organisers keeping all your pot lids in perfect order, or a great bunch of fully extendable drawers

making everything easy to reach. Not to mention drawers inside drawers allowing you to utilise the cabinet space to a maximum. It's really up to you what goes inside your kitchen cabinets.

On the following pages you'll find numerous of handy helpers making your daily work in the kitchen run smoother.



MAXIMERA drawers and drawer accessories

MAXIMERA drawers pull out all the way, and thanks to a built-in damper they always close softly and effortlessly. You have complete overview and you can easily reach the smallest of utensils even at the back of the drawer.

MAXIMERA drawers are available in different sizes to give you plenty of options depending on your storage needs. You can also add inner drawers to fully utilise the cabinet space.



MAXIMERA pull-out interior fittings.

| | |
|-------|------------|
| 20 cm | 703.188.68 |
| 30 cm | 304.170.40 |



MAXIMERA drawer low*, white.

| | |
|----------|------------|
| 40×37 cm | 002.214.45 |
| 40×60 cm | 602.214.47 |
| 60×37 cm | 302.046.37 |
| 60×60 cm | 202.046.28 |
| 80×37 cm | 802.046.30 |
| 80×60 cm | 402.046.27 |



MAXIMERA drawer medium*, white.

| | |
|----------|------------|
| 40×37 cm | 602.046.26 |
| 40×60 cm | 402.214.48 |
| 60×37 cm | 802.214.46 |
| 60×60 cm | 202.214.49 |
| 80×37 cm | 102.046.38 |
| 80×60 cm | 502.046.36 |



MAXIMERA drawer high, white.

| | |
|----------|------------|
| 40×37 cm | 702.046.35 |
| 40×60 cm | 002.046.34 |
| 60×37 cm | 402.046.32 |
| 60×60 cm | 902.046.39 |
| 80×37 cm | 002.214.50 |
| 80×60 cm | 202.046.33 |

For waste sorting (see page 131)

| | |
|----------|------------|
| 60×45 cm | 602.046.31 |
| 80×45 cm | 002.046.29 |



MAXIMERA add-on side for high drawer, glass, 2-p.

| | |
|-------|------------|
| 37 cm | 102.388.60 |
| 60 cm | 502.388.58 |



MAXIMERA add-on side for medium drawer, glass, 2-p.

| | |
|-------|------------|
| 37 cm | 702.388.62 |
| 60 cm | 302.388.59 |

UTRUSTA baskets and drawer fronts



UTRUSTA wire basket.

| | |
|-------|------------|
| 40 cm | 802.046.73 |
| 60 cm | 002.046.72 |



UTRUSTA drawer front, low, white.

| | |
|-------|------------|
| 40 cm | 802.214.51 |
| 60 cm | 402.046.51 |
| 80 cm | 202.046.52 |



UTRUSTA drawer front, medium, white.

| | |
|-------|------------|
| 40 cm | 602.214.52 |
| 60 cm | 802.046.54 |
| 80 cm | 402.214.53 |



UTRUSTA drawer front, high, white.

| | |
|-------|------------|
| 40 cm | 002.046.53 |
| 60 cm | 502.046.55 |
| 80 cm | 302.046.56 |

EXCEPTIONELL drawers

EXCEPTIONELL drawer is a smooth-running, push-to-open, full-extension drawer with built-in dampers so that it closes slowly, softly and quietly. You can create more storage with inner drawers, either inside a higher drawer or behind the door. You can use the top drawer

for cutlery and utensils and the other drawers for pots and pans. Makes it easier to keep your cutlery and utensils organised, so you can quickly find what you need in the kitchen drawer and start cooking.



EXCEPTIONELL pull-out interior fittings, with push to open.

| | |
|-------|------------|
| 20 cm | 104.478.25 |
| 30 cm | 904.478.26 |



EXCEPTIONELL drawer, low with push to open, white.

| | |
|----------|------------|
| 40×37 cm | 904.478.12 |
| 40×60 cm | 504.478.14 |
| 60×37 cm | 204.478.15 |
| 60×60 cm | 004.478.16 |
| 80×37 cm | 804.478.17 |
| 80×60 cm | 604.478.18 |



EXCEPTIONELL drawer, medium with push to open, white.

| | |
|----------|------------|
| 40×37 cm | 404.478.19 |
| 40×60 cm | 204.478.20 |
| 60×37 cm | 004.478.21 |
| 60×60 cm | 804.478.22 |
| 80×37 cm | 604.478.23 |
| 80×60 cm | 404.478.24 |



EXCEPTIONELL drawer, high with push to open, white.

| | |
|----------|------------|
| 40×37 cm | 604.478.04 |
| 40×60 cm | 304.478.05 |
| 60×37 cm | 104.478.06 |
| 60×45 cm | 904.478.07 |
| 60×60 cm | 704.478.08 |
| 80×37 cm | 504.478.09 |
| 80×45 cm | 304.478.10 |
| 80×60 cm | 104.478.11 |

Corner interior



UTRUSTA wall corner cabinet carousel.

| | |
|-------|------------|
| 68 cm | 802.656.47 |
|-------|------------|



UTRUSTA corner base cabinet pull-out fitting.

| | |
|--------|------------|
| 128 cm | 402.152.92 |
|--------|------------|



UTRUSTA corner base cabinet carousel.

| | |
|-------|------------|
| 88 cm | 602.152.91 |
|-------|------------|

METHOD system fittings and hinges

Even the smaller details are important when you are planning a complete kitchen. It all depends on your needs and wishes – but maybe it's just this small part that will make a big difference.



METHOD suspension rail, 200 cm.
Galvanised 602.056.64



METHOD ventilation grille.
Stainless steel 702.561.77



METHOD ventilated plinth, 60 cm.
Stainless steel 302.214.58



UTRUSTA push opener, 2-p. Push to open; no handles needed.

802.302.24



UTRUSTA hinge 45°, 2-p. The hinge is only for use with a corner wall cabinet and is only needed when you want to mount two doors on the cabinet.

202.619.92



UTRUSTA hinge with built-in damper for kitchen 153°, 2-p. This hinge has an integrated damper, so that the door closes slowly, softly and silently. You can easily deactivate the damper with a side button, for example if you want to use a push opener or if the door closes too slowly, and re-activate if you want.

104.272.62



UTRUSTA hinge 95°, 2-p. Fits cabinets for integrated fridge/freezers.

202.046.47



UTRUSTA hinge with built-in damper 110°, 2-p. This hinge has an integrated damper, so that the door closes slowly, softly and silently. You can easily deactivate the damper with a slide button, for example if you want to use a push opener or if the door closes too slowly, and re-activate it if you want.

805.248.82



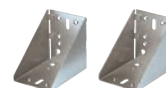
UTRUSTA hinge with push-opener for horizontal door, 2-p. Push to open; no handles needed. Door lift with catch for gentle closing included. You can easily mount the door front in the right position, because the hinges are adjustable in height, depth and width. Snap-on hinges can be mounted onto the door without screws, and you can easily remove the door for cleaning.

Black 904.624.83
White 704.624.84



UTRUSTA hinge with damper for horizontal door, 2-p. This hinge has an integrated damper, so that the door closes slowly, softly and silently. You can easily mount the door front in the right position, because the hinges are adjustable in height, depth and width. Snap-on hinges can be mounted onto the door without screws, and you can easily remove the door for cleaning.

Black 704.624.79
White 504.624.80



UTRUSTA corner fittings, 2-p. By using the corner fitting, you can build a corner wall-cabinet solution at a 90° angle.

Galvanised 403.059.71



METHOD cover strip, 220cm. After mounting your new kitchen cabinets, finish the look of your kitchen like a professional. This cover strip works magic by covering the gap between the cabinets and the wall.

White 102.448.42
Wood effect black 902.448.43



New

METHOD connector rail for cabinets/cover panel, 2-p. This rail helps you to connect your base cabinets back-to-back. It can also be used to attach a cover panel to the back side of a base cabinet, giving your kitchen island or peninsula a uniform look.

805.570.28



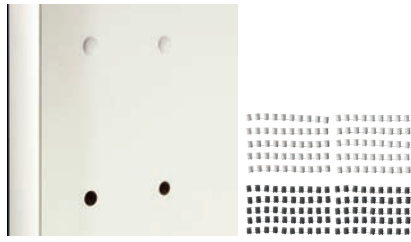
New

METHOD floor anchoring frame for kitchen island. This floor anchoring frame simplifies the task of securing your kitchen island or peninsula to make sure that it stays in place. The feet can be adjusted to level your frame on uneven floors.

210 cm 805.570.33



UTRUSTA connection fitting for doors. UTRUSTA connection fitting for doors is used to connect two doors to one, so you get a uniform look for e.g. a high cabinet or an integrated fridge and freezer.
303.669.17



VARIERA cover cap, 100-p. Covers drill holes in the glass door cabinet or open shelf. Suitable for all products with 5 mm holes.
White 002.263.15
Black 802.263.16

Shelves



UTRUSTA shelf*, white, 2-p.

| | |
|----------|------------|
| 20×60 cm | 702.056.06 |
| 30×37 cm | 304.173.42 |
| 30×60 cm | 304.173.99 |
| 40×37 cm | 402.056.22 |
| 40×60 cm | 302.056.13 |
| 60×37 cm | 102.056.14 |
| 60×60 cm | 502.056.12 |
| 80×37 cm | 102.056.09 |
| 80×60 cm | 702.056.11 |



UTRUSTA shelf*, wood effect black, 2-p.

| | |
|----------|------------|
| 20×60 cm | 802.056.15 |
| 30×37 cm | 504.173.98 |
| 30×60 cm | 004.174.09 |
| 40×37 cm | 502.129.76 |
| 40×60 cm | 602.056.21 |
| 60×37 cm | 802.056.20 |
| 60×60 cm | 002.056.19 |
| 80×37 cm | 202.056.18 |
| 80×60 cm | 402.056.17 |



UTRUSTA shelf*, glass, 2-p.

| | |
|----------|------------|
| 30×37 cm | 204.174.13 |
| 40×37 cm | 202.133.31 |
| 60×37 cm | 902.056.05 |
| 80×37 cm | 202.056.04 |



UTRUSTA shelf for corner wall cabinet*, 68 cm.

| | |
|-------------------|------------|
| Glass | 802.056.63 |
| White | 002.056.62 |
| Wood effect black | 402.056.60 |



UTRUSTA shelf for corner base cabinet*, 128 cm.

| | |
|-------------------|------------|
| White | 502.132.97 |
| Wood effect black | 302.132.98 |



UTRUSTA shelf for corner base cabinet*, 88 cm.

| | |
|-------------------|------------|
| White | 802.776.50 |
| Wood effect black | 602.776.51 |



UTRUSTA fixed ventilated shelf*, 60×60 cm.

| | |
|-------------------|------------|
| White | 902.135.73 |
| Wood effect black | 102.135.72 |



UTRUSTA bracket for oven*.

| | |
|------------|------------|
| Galvanised | 103.019.60 |
|------------|------------|

Additional interior fittings and organisers



UTRUSTA cleaning interior, 140 cm. Pull-out organisers make it easy for you to see and reach your cleaning supplies.

403.258.89



UTRUSTA pull-out larder. The shallow door baskets give a good overview of bottles and spice jars, while the larger cabinet baskets are perfect for larger/bulkier items.

505.153.46



VARIERA holder for iron. Keep things tidy with help from the included iron cord holder.

Galvanised 900.903.84



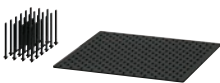
UTRUSTA towel rail, 16 cm. It's easy to access towels because it pulls out.

White 502.472.16



UTRUSTA pull-out work surface, 60 cm. You can never have too much work space in the kitchen. This clever pull-out surface comes to the rescue when unloading groceries or chopping veggies and hides away when you push it in again.

005.105.77



UPPDATERA pegboard drawer organiser. Adjustable pegs make it easy to customise drawers according to contents, such as plates, pots, lids or food containers.

60 cm 604.600.08

80 cm 004.600.11



VARIERA plastic bag dispenser. Ideal for storing things like plastic bags, toilet/kitchen rolls, gloves and socks.

White 800.102.22



VARIERA shelf insert, white. Place on a shelf to get more storage space for glasses, bowls and spice jars. Makes the contents of the cabinet easy to overview and access.

32×13×16 cm 801.366.22

32×28×16 cm 601.366.23



UPPDATERA plate holder, anthracite. The plate holder is adjustable, so you can customise the width based on the size of your plates.

15-23 cm 704.861.78

19-31 cm 504.861.79



UPPDATERA box, set of 3.

Grey 205.441.85



UPPDATERA divider for drawer. You can customise your storage since the dividers are adjustable. Perfect for keeping things like food containers and lids organised.

40 cm 204.599.88

60 cm 404.599.92

80 cm 904.599.99



VARIERA pot lid organiser, stainless steel. You can customise the length based on your storage needs.

701.548.00

ENHET kitchen system

Plan less, live more

ENHET is easy to buy and equally easy to update if you need to, or simply feel like it. You can choose between ready-made combinations online and buy your favourite with a few clicks. All parts are easy to assemble, intuitively and without any special tools.

The playful design in different colours inspires you to adapt ENHET to reflect your personality. With a combination of open frames and closed cabinets you can display your favourite things and hide the rest. The ENHET kitchen units also come in different widths and depths, making them easy to adapt to a smaller space.

Helping you keep your kitchen utensils neatly organised and close at hand, the ENHET accessories include a hook rail that can be moved around without having to drill into the wall, a swivel shelf for smaller items and a hanging shelf insert that you simply hang in the grooves of an open frame to maximise storage space – no tools needed.

10

The ENHET kitchen has a 10-year guarantee. Find out more on page 149





ENHET complete kitchens

Whatever shape your home takes, ENHET will fit right in. Just pick one of many affordable kitchen combinations and you will have a practical kitchen ready in next to no time. After you have chosen your ENHET kitchen you can use the

Kitchen configurator online to customise it and style it to suit you even more. When you are happy with the result, just add appliances and lighting and you are ready to go.



ENHET K100



ENHET K104



ENHET K107



ENHET K109



ENHET K110



ENHET K116



ENHET K118



ENHET K124



ENHET K501



ENHET K502



ENHET K503



ENHET K508



Explore your options online with the ENHET kitchen configurator – check it out at www.IKEA.com/kitchenplanner

ENHET complete kitchens

It's time to get into details and find the kitchen that fits your needs. In the following you can find the information about the different combinations that you need to make your final decision. When you have chosen your favourite solution you

can use the kitchen configurator online to tweak it and style it to suit you even more. You are just a few steps away from cooking and hanging out in your ENHET kitchen.



ENHET K100 W103×D63.5×H222 cm.

A compact solution with a mix of easy-reach shelves as well as a clutter-concealing cabinet and drawers – whatever your kitchen storage needs, this easy-fit combo is ready to please.

| This combination with | White frame | Anthracite frame | |
|------------------------|-------------|------------------|---|
| Grey frame front | 294.855.63 | 293.367.14 | — |
| High gloss white front | 093.367.05 | — | — |
| Oak effect front | 193.367.08 | — | — |
| Pale grey-green front | 094.991.89 | — | — |

Note! Appliances and lighting products not included.



ENHET K101 W103×D63.5×H222 cm.

This combination offers a perfect mix of open and closed storage and all the functions you need in a 103 cm space.

| This combination with | White frame | Anthracite frame | |
|------------------------|-------------|------------------|---|
| White front | 933.689.91 | 293.369.31 | — |
| Grey frame front | 594.856.46 | — | — |
| High gloss white front | 493.369.11 | — | — |
| Oak effect front | 993.369.18 | — | — |

Note! Appliances and lighting products not included.



ENHET K102 W 123×D63.5×H222 cm.

This one offers a mix of open and closed storage, a workspace and room for built-in appliances – all in a 123 cm space.

| This combination with | White frame | Anthracite frame | |
|------------------------|-------------|------------------|---|
| White front | 093.370.45 | 893.370.70 | — |
| Grey frame front | 794.857.06 | — | — |
| High gloss white front | 693.370.52 | — | — |
| Oak effect front | 993.370.60 | — | — |

Note! Appliances and lighting products not included.



ENHET K103 W123×D63.5×H222 cm.

This combination offers a perfect mix of open and closed storage as well as a combined work and cook area – all in a 123 cm space.

| This combination with | White frame | Anthracite frame | |
|------------------------|-------------|------------------|---|
| White front | 193.370.97 | 793.371.22 | — |
| Grey frame front | 794.856.74 | — | — |
| High gloss white front | 193.371.01 | — | — |
| Oak effect front | 493.371.09 | — | — |

Note! Appliances and lighting products not included.



ENHET K104 W123×D63.5×H222 cm.

A compact solution that keeps things simple and organised. There's a perfect mix of open and closed storage and the functions you need in a small but well-planned space.

| This combination with | White frame | Anthracite frame |
|------------------------|-------------|------------------|
| White front | 993.371.83 | 893.372.25 |
| Grey frame front | 294.855.44 | 093.372.34 |
| High gloss white front | 993.371.83 | — |
| Oak effect front | 193.372.19 | — |
| Pale grey green front | 394.991.97 | — |

Note! Appliances and lighting products not included.



ENHET K105 W143×D63.5×H222 cm.

This combination is only 143 cm wide but offers a perfect mix of open and closed storage and all the functions you need.

| This combination with | White frame | Anthracite frame |
|------------------------|-------------|------------------|
| White front | 393.372.37 | 293.372.52 |
| Grey frame front | 294.855.82 | — |
| High gloss white front | 193.372.43 | — |
| Oak effect front | 493.372.46 | — |

Note! Appliances and lighting products not included.



ENHET K107 W163×D63.5×H222 cm.

This one offers a perfect mix of open and closed storage as well as a combined cook and work area in a small but well-planned space.

| This combination with | White frame | Anthracite frame |
|------------------------|-------------|------------------|
| White front | 493.373.31 | 193.373.56 |
| Grey frame front | 594.855.66 | — |
| High gloss white front | 493.373.31 | — |
| Oak effect front | 593.373.40 | — |

Note! Appliances and lighting products not included.



ENHET K108 W163×D63.5×H222 cm.

This one offers a perfect mix of open and closed storage, room for built-in appliances and ample workspace if you choose a narrow hob.

| This combination with | White frame | Anthracite frame | |
|-----------------------|-------------|------------------|---|
| White front | 993.373.81 | 193.374.36 | |
| Grey frame front | 294.855.96 | — | — |
| Oak effect front | 093.374.27 | — | — |

Note! Appliances and lighting products not included.



ENHET K112 W183×D63.5×H222 cm.

In this well-planned space you have open and closed storage, a work area and space for freestanding and built-in appliances.

| This combination with | White frame | Anthracite frame | |
|------------------------|-------------|------------------|---|
| White front | 593.374.77 | 993.375.07 | |
| Grey frame front | 994.856.30 | — | — |
| High gloss white front | 493.374.87 | — | — |
| Oak effect front | 593.374.96 | — | — |

Note! Appliances and lighting products not included.



ENHET K110 W183×D63.5×H222 cm.

Everything is within arm's reach in this practical kitchen solution. There's room for dicing your veggies and cooking your food – and there's plenty of storage space too.

| This combination with | White frame | Anthracite frame | |
|------------------------|-------------|------------------|---|
| White front | 493.373.07 | 593.373.59 | |
| Grey frame front | 994.855.74 | — | — |
| High gloss white front | 293.373.32 | — | — |
| Oak effect front | 193.373.37 | — | — |
| Pale grey-green front | 694.992.09 | — | — |

Note! Appliances and lighting products not included.



ENHET K114 W203×D63.5×H222 cm.

This one offers a perfect mix of open and closed storage, room for built-in appliances and ample workspace if you choose a narrow hob.

| This combination with | White frame | Anthracite frame | |
|------------------------|-------------|------------------|---|
| White front | 193.375.54 | 093.375.64 | |
| Grey frame front | 693.375.56 | 193.375.68 | |
| High gloss white front | 293.375.58 | — | — |
| Oak effect front | 893.375.60 | — | — |

Note! Appliances and lighting products not included.



ENHET K116 W223×D63.5×H222 cm.

A mix of open and closed storage, a work area and space for built-in appliances make this a perfect combination for the everyday chef.

| This combination with | White frame | Anthracite frame | |
|-----------------------|-------------|------------------|---|
| White front | 493.377.36 | — | — |
| Grey frame front | 893.377.39 | — | — |
| Oak effect front | 593.377.45 | — | — |

Note! Appliances and lighting products not included.



ENHET K120 W243×D63.5×H222 cm.

Here you have a perfect mix of open and closed storage and generous space for preparing food in a well-planned combination.

| This combination with | White frame | | Anthracite frame | |
|------------------------|-------------|---|------------------|---|
| White front | — | — | 593.381.13 | — |
| White frame front | — | — | 493.381.18 | — |
| Grey frame front | 094.856.20 | — | — | — |
| High gloss white front | 993.380.88 | — | — | — |
| Oak effect front | 893.380.98 | — | — | — |

Note! Appliances and lighting products not included.



ENHET K118 W243×D63.5×H222 cm

A functional solution with plenty of workspace for the ambitious chef and generous closed storage to hide the clutter, for a clean, uniform look.

| This combination with | White frame | Anthracite frame |
|------------------------|-------------|------------------|
| White front | 893.378.81 | — |
| White frame front | 294.809.28 | — |
| Grey frame front | 994.855.88 | — |
| High gloss white front | 493.379.15 | — |
| Oak effect front | 693.379.24 | — |
| Pale grey-green front | 194.992.16 | — |

Note! Appliances and lighting products not included.



ENHET K123 W323×D63.5×H241 cm.

This one offers a personal mix of open and closed storage, a spacious work area and all the functions an aspiring chef needs.

| This combination with | White frame | | Anthracite frame | |
|------------------------|-------------|---|------------------|---|
| White front | — | — | 393.378.93 | — |
| Grey frame front | 193.378.51 | — | — | — |
| High gloss white front | 893.378.57 | — | — | — |
| Oak effect/white front | 093.378.75 | — | — | — |

Note! Appliances and lighting products not included.



ENHET K124 W266.5xD63.5x222.5 cm.

All you need for kitchen work to flow smoothly in one clever solution. With open and closed storage, a functional work area and smart use of space for cooking, everyday life in the kitchen is easier.

| This combination with | White frame |
|-----------------------|-------------|
| White front | 694.374.57 |
| Grey frame front | 294.374.40 |
| Pale grey-green front | 694.992.47 |

Note! Appliances and lighting products not included.



ENHET K125 W301.5xD63.5x222.5 cm.

This one has generous storage space and a cabinet to accommodate an integrated fridge/freezer for a smooth, uniform look. (No open frame included in this combination.)

| This combination with | White front |
|-----------------------|-------------|
| White front | 394.374.30 |

Note! Appliances and lighting products not included.



ENHET K126 W183xD63.5xH221.3 cm.

A compact kitchen solution with all the basic ingredients - there's room for cooking or washing and there is plenty of open and closed storage for the essentials needed - whatever task you have at hand.

| This combination with | White frame |
|-----------------------|-------------|
| White front | 894.774.14 |

Note! Appliances and lighting products not included.



ENHET K500 W170.5x/168.5xD63.5x222 cm.

This one offers a mix of open and closed storage in a corner solution that eases the work flow by putting everything close at hand.

| This combination with | White frame | Anthracite frame |
|------------------------|-------------|------------------|
| White front | 793.379.52 | 993.379.70 |
| Grey frame front | 894.856.02 | 693.379.81 |
| High gloss white front | 793.379.52 | — |
| Oak effect front | 293.379.59 | — |

Note! Appliances and lighting products not included.



ENHET K503 W210.5/248.5×D63.5×H226 cm.

This one offers space for built-in appliances and a corner solution that eases the work flow by putting everything close at hand.

| This combination with | White frame | Anthracite frame |
|------------------------|-------------|------------------|
| White front | 393.381.52 | 693.381.98 |
| White frame front | — | 593.382.07 |
| Grey frame front | 094.856.15 | — |
| High gloss white front | 893.381.64 | — |
| Oak effect/white front | 493.381.75 | — |

Note! Appliances and lighting products not included.



ENHET K506 W261.5/221.5×D63.5×H222 cm.

This one offers all the functions you need and a generous workspace where you can prepare food or fold clothes.

| This combination with | White frame | Anthracite frame |
|------------------------|-------------|------------------|
| White front | 393.380.29 | — |
| White frame front | — | 893.380.41 |
| Grey frame front | 194.855.30 | — |
| High gloss white front | 593.380.33 | — |
| Oak effect front | 093.380.35 | — |

Note! Appliances and lighting products not included.



ENHET K508 W168.5/290.5×D63.5×H241 cm.

This one offers wall storage in different depths to cater to your needs - a personal expression that puts everything close at hand.

| This combination with | White frame | Anthracite frame |
|------------------------|-------------|------------------|
| White front | 893.378.43 | — |
| White frame front | — | 693.379.76 |
| Grey frame front | 994.856.49 | — |
| High gloss white front | 993.379.32 | — |
| Oak effect/White front | 993.379.46 | — |

Note! Appliances and lighting products not included.



ENHET K509 W269.9/192.9×D63.5×H222.5 cm.

All you could ask for and more. This corner solution offers generous storage and working space. There's a planned space for washing machine too allowing you to extend the function of your kitchen.

| This combination with | White frame |
|-----------------------|-------------|
| Grey frame front | 594.774.15 |

Note! Appliances and lighting products not included.

ENHET storage combinations

ENHET is all about simplicity and the possibility to change and adapt your home when your life changes. No matter what happens, everyday life becomes much easier when all things can be found in their designated place, especially if floorspace

is limited. That is why we have developed these combinations that can create extra work and/or storage space. Pick the one that best suits your needs and helps you use your space efficiently.



ENHET A100 storage combination W60×D32×H255 cm.

This combo makes good use of the wall space while taking up minimal floor space. You can keep cluttering items dust-free behind doors and create a statement with your favourite objects on the open shelves.

| This combination with | White frame | Anthracite frame |
|------------------------|-------------|------------------|
| White front | 295.480.61 | 595.480.88 |
| White frame front | — | 895.480.20 |
| Grey frame front | — | 595.479.13 |
| High gloss white front | 995.481.09 | — |
| Oak effect front | 395.479.28 | — |
| Pale grey-green front | 295.479.43 | — |



ENHET A101 storage combination W120×D32×H150 cm.

A clever combination with a mix of open and closed storage. It makes good use of wall space - and offers just the place for a waste bin and/or towels.

| This combination with | White frame | Anthracite frame |
|------------------------|-------------|------------------|
| White front | 695.480.64 | 995.480.10 |
| White frame front | — | 595.479.27 |
| Grey frame front | — | 295.479.76 |
| High gloss white front | 795.481.29 | — |
| Oak effect front | 295.481.22 | — |
| Pale grey-green front | 695.481.20 | — |



ENHET A102 storage combination W60×D32×H150 cm.

A mix of open and closed storage that allows you to show or not to show. Put your favourite objects on display and hide the messy stuff. A clever combo that can be placed almost anywhere in your home.

| This combination with | White frame | Anthracite frame |
|------------------------|-------------|------------------|
| White front | 895.481.24 | 195.479.10 |
| White frame front | — | 095.479.63 |
| Grey frame front | — | 995.479.54 |
| High gloss white front | 695.480.59 | — |
| Oak effect front | 795.479.07 | — |
| Pale grey-green front | 195.479.48 | — |



ENHET A103 storage combination W121.5×D63.5×H222 cm.

A compact solution with a mix of easy-reach shelves and clutter-concealing drawers - whatever your space or storage needs, this easy-fit combo is ready to please.

| This combination with | White frame | Anthracite frame |
|------------------------|-------------|------------------|
| White front | 095.480.38 | 295.480.75 |
| Grey frame front | — | — |
| High gloss white front | 795.480.54 | — |
| Oak effect front | 395.481.07 | — |
| Pale grey-green front | 595.481.25 | — |



ENHET A104 kitchen island W123×D63.5×H90.3 cm.

This kitchen island will be the centre of attention whether you are preparing food, unloading groceries or serving tapas.

| This combination with | White frame | Anthracite frame |
|-----------------------|-------------|------------------|
| | 693.315.16 | — |



ENHET A105 storage combination W143×D63.5×H90.3 cm.

This combination offers 2 workspaces, plenty of open storage and a handy drawer under the oven for pans, foil and baking paper.

| This combination with | White frame | Anthracite frame |
|-----------------------|-------------|------------------|
| White front | 995.478.93 | — |



ENHET A107 storage combination W123×D63.5×H207 cm.

This solution offers closed storage along the wall allowing you to hide the clutter and an open unit beneath to store often-used items. There's a handy workspace too - you're welcome.

| This combination with | White frame | Anthracite frame |
|------------------------|-------------|------------------|
| White front | 995.481.14 | — |
| Grey frame front | 995.480.53 | — |
| High gloss white front | 695.479.03 | — |
| Oak effect front | 095.480.62 | — |
| Pale grey green front | 595.481.11 | — |



ENHET A108 kitchen island storage combination with seating W123×D63.5×H90.3 cm.

This kitchen island puts things within easy reach and will soon become your favourite spot for snacking, working and socialising.

| This combination with | White frame | Anthracite frame |
|-----------------------|-------------|------------------|
| | 593.315.69 | — |



ENHET A109 storage combination W121.5×D63.5×H222 cm.
The open storage creates an airy feel and the accessories put things within easy reach - there's even a perfect spot for your fridge.

| This combination with | White frame | Anthracite frame |
|-----------------------|-------------|------------------|
| | 295.480.42 | — |



ENHET A112 storage combination W90×D32×H180 cm.
This combination offers a perfect mix of open and closed storage – and a tailored space for a washing machine and laundry bin.

| This combination with | White frame | Anthracite frame |
|------------------------|-------------|------------------|
| White front | 695.479.60 | 895.479.64 |
| White frame front | — | 695.480.02 |
| Grey frame front | — | 895.479.16 |
| High gloss white front | 195.481.32 | — |
| Oak effect front | 395.480.89 | — |
| Pale grey-green front | 895.479.35 | — |



ENHET A113 storage combination W40×D17×H150 cm.
This shallow combination uses the wall space to create storage. Keep cluttering items behind door and use the shelves for easy access to things often used.

| This combination with | White frame | Anthracite frame |
|------------------------|-------------|------------------|
| White front | 595.480.12 | 995.479.87 |
| White frame front | — | 995.480.05 |
| Grey frame front | — | 895.481.19 |
| High gloss white front | 295.480.99 | — |
| Oak effect front | 495.481.35 | — |
| Pale grey-green front | 695.479.22 | — |



ENHET A114 storage combination W120×D32×H150 cm.
A mix of open and closed storage that allows you to show or not to show. Put your favourite objects on display and hide the messy stuff. A clever combo that can be placed almost anywhere in your home.

| This combination with | White frame | Anthracite frame |
|------------------------|-------------|------------------|
| White front | 095.479.77 | 995.480.86 |
| White frame front | — | 695.478.99 |
| Grey frame front | — | 895.480.01 |
| High gloss white front | 495.479.37 | — |
| Oak effect front | 695.480.21 | — |
| Pale grey-green front | 595.481.06 | — |



ENHET A115 storage combination W60×D32×H180 cm.

This high cabinet and open wall frame make it possible to utilise the wall space for storage while also saving floor space.

| This combination with | White frame | Anthracite frame |
|------------------------|-------------|------------------|
| White front | 595.480.50 | 395.478.86 |
| White frame front | — | 795.480.25 |
| Grey frame front | — | 695.479.98 |
| High gloss white front | 495.480.98 | — |
| Oak effect front | 095.480.00 | — |
| Pale grey-green front | 095.479.58 | — |



ENHET A116 storage combination W80×D32×H150 cm.

A mix of open and closed storage that allows you to show or not to show. Put your favourite objects on display and hide the messy stuff. A clever combo that can be placed almost anywhere in your home.

| This combination with | White frame | Anthracite frame |
|------------------------|-------------|------------------|
| White front | 395.479.52 | 695.479.36 |
| Grey frame front | — | 195.479.29 |
| High gloss white front | 795.480.11 | — |
| Oak effect front | 295.479.19 | — |
| Pale grey-green front | 595.480.07 | — |



ENHET A117 storage combination W120×D32×H225 cm.

This combo makes good use of the wall space while taking up minimal floor space. You can keep cluttering items dust-free behind doors and create a statement with your favourite objects on the open shelves.

| This combination with | White frame | Anthracite frame |
|------------------------|-------------|------------------|
| White front | 095.481.04 | 095.479.82 |
| White frame front | — | 895.479.97 |
| Grey frame front | — | 495.478.95 |
| High gloss white front | 395.481.26 | — |
| Oak effect front | 495.481.40 | — |
| Pale grey-green front | 995.480.67 | — |

ENHET doors and drawer fronts

Show your true colours

Whether you are set on a classic one-coloured look or prefer a funkier mix of different hues, ENHET offers a range of doors and drawer fronts that will accommodate your wishes. There are colours that bring a clean, bright and fresh look to your kitchen which you can match with every colour of the rainbow. Naturally, you can also mix colours for

a truly personalised kitchen, and combine closed doors with open shelves for a more playful expression. No matter the style you choose, the surface of the doors resists moisture, scratches and bumps, which means that your kitchen is well prepared to handle years of daily wear and tear.

10

Kitchen doors have a 10-year guarantee.
Find out more on page 149



ENHET door and drawer front styles



White

With white doors and drawer fronts you create a clean, bright and fresh expression that you can match with accents in all colours of the rainbow. Easy to enjoy and always in style.



White frame

A white surface with a wide frame is like an empty canvas where your choice of accessories and accent colours sets the style. Modern or classic – you decide.



Grey frame

With grey as a base, you create a warm and cosy feeling. Perfect if you want a discreet colour that goes with everything. Modern or classic – you decide the style.

Door

| | |
|-----------|------------|
| 60×60 cm | 504.521.55 |
| 40×75 cm | 304.521.61 |
| 60×75 cm | 904.521.63 |
| 60×135 cm | 105.160.17 |
| 30×180 cm | 204.521.66 |

Front for dishwasher

| | |
|----------|------------|
| 45×75 cm | 004.997.73 |
| 60×75 cm | 904.521.63 |

Drawer front

| | |
|---------------|------------|
| 40×15 cm | 404.521.65 |
| 60×15 cm | 504.521.60 |
| 80×15 cm | 704.521.59 |
| 40×30 cm, 2-p | 704.521.64 |
| 60×30 cm, 2-p | 804.521.68 |
| 80×30 cm, 2-p | 904.521.58 |

Drawer front for base cabinet for oven

| | |
|----------|------------|
| 60×14 cm | 604.574.78 |
|----------|------------|



Door

| | |
|-----------|------------|
| 60×60 cm | 804.577.26 |
| 40×75 cm | 004.577.25 |
| 60×75 cm | 604.577.27 |
| 60×135 cm | 105.160.41 |
| 30×180 cm | 504.577.23 |

Front for dishwasher

| | |
|----------|------------|
| 45×75 cm | 804.997.74 |
| 60×75 cm | 604.577.27 |

Drawer front

| | |
|---------------|------------|
| 40×15 cm | 404.521.65 |
| 60×15 cm | 504.521.60 |
| 80×15 cm | 704.521.59 |
| 40×30 cm, 2-p | 204.577.29 |
| 60×30 cm, 2-p | 804.577.31 |
| 80×30 cm, 2-p | 404.577.33 |

Drawer front for base cabinet for oven

| | |
|----------|------------|
| 60×14 cm | 604.574.78 |
|----------|------------|



Door

| | |
|-----------|------------|
| 60×60 cm | 004.576.69 |
| 40×75 cm | 204.576.68 |
| 60×75 cm | 804.576.70 |
| 60×135 cm | 105.160.60 |
| 30×180 cm | 604.576.66 |

Front for dishwasher

| | |
|----------|------------|
| 45×75 cm | 604.997.70 |
| 60×75 cm | 804.576.70 |

Drawer front

| | |
|---------------|------------|
| 40×15 cm | 604.576.71 |
| 60×15 cm | 204.576.73 |
| 80×15 cm | 704.576.75 |
| 40×30 cm, 2-p | 404.576.72 |
| 60×30 cm, 2-p | 004.576.74 |
| 80×30 cm, 2-p | 504.576.76 |

Drawer front for base cabinet for oven

| | |
|----------|------------|
| 60×14 cm | 304.576.77 |
|----------|------------|





High gloss white

The light reflects on this glossy surface and creates a clean, modern expression. Suits everyone from the choosy minimalist to the wild family with kids.



Oak effect

Good sense and feel in beautiful partnership. The foil surface resists moisture, scratches and bumps, while the wood pattern creates a lively and warm expression.



Pale grey-green

This is a perfect choice if you want to create a modern, industrial expression that feels warm and inviting. The pattern is reminiscent of concrete and the foil is both durable and easy to care for WITH With pale grey-green fronts you get a beautiful blend of calm and elegant, transforming your home into an appealing oasis for relaxing, socializing and feeling content.

Door

| | |
|-----------|------------|
| 60×60 cm | 804.577.12 |
| 40×75 cm | 004.577.11 |
| 60×75 cm | 604.577.13 |
| 60×135 cm | 405.160.49 |
| 30×180 cm | 404.577.09 |

Front for dishwasher

| | |
|----------|------------|
| 45×75 cm | 404.997.71 |
| 60×75 cm | 604.577.13 |

Drawer front

| | |
|---------------|------------|
| 40×15 cm | 404.577.14 |
| 60×15 cm | 904.577.16 |
| 80×15 cm | 504.577.18 |
| 40×30 cm, 2-p | 104.577.15 |
| 60×30 cm, 2-p | 704.577.17 |
| 80×30 cm, 2-p | 304.577.19 |

Drawer front for base cabinet for oven

| | |
|----------|------------|
| 60×14 cm | 104.577.20 |
|----------|------------|



Door

| | |
|-----------|------------|
| 60×60 cm | 604.576.47 |
| 40×75 cm | 804.576.46 |
| 60×75 cm | 404.576.48 |
| 60×135 cm | 605.160.53 |
| 30×180 cm | 304.576.44 |

Front for dishwasher

| | |
|----------|------------|
| 45×75 cm | 204.997.72 |
| 60×75 cm | 404.576.48 |

Drawer front

| | |
|---------------|------------|
| 40×15 cm | 204.576.49 |
| 60×15 cm | 804.576.51 |
| 80×15 cm | 904.576.55 |
| 40×30 cm, 2-p | 004.576.50 |
| 60×30 cm, 2-p | 604.576.52 |
| 80×30 cm, 2-p | 704.576.56 |

Drawer front for base cabinet for oven

| | |
|----------|------------|
| 60×14 cm | 504.576.57 |
|----------|------------|



Door

| | |
|-----------|------------|
| 60×60 cm | 805.395.29 |
| 40×75 cm | 205.395.27 |
| 60×75 cm | 405.395.31 |
| 60×135 cm | 005.395.28 |
| 30×180 cm | 905.395.24 |

Front for dishwasher

| | |
|----------|------------|
| 45×75 cm | 505.395.40 |
| 60×75 cm | 405.395.31 |

Drawer front

| | |
|---------------|------------|
| 40×15 cm | 205.395.32 |
| 60×15 cm | 505.395.35 |
| 80×15 cm | 105.395.37 |
| 40×30 cm, 2-p | 005.395.33 |
| 60×30 cm, 2-p | 305.395.36 |
| 80×30 cm, 2-p | 905.395.38 |

Drawer front for base cabinet for oven

| | |
|----------|------------|
| 60×14 cm | 705.395.39 |
|----------|------------|



ENHET cabinets and frames

Keep an open mind!

With this range of cabinets and frames you can create a kitchen that fits both your needs and personality. The open wall frames make good use of the space above the sink and worktop, perfect for hanging utensils or placing your tableware and other things that you often use. The choice of wide and narrow

cabinets, as well as deep and shallow frames, gives you a great opportunity to use your space efficiently. Easily adaptable, and with a 10-year guarantee, this practical kitchen will be your companion for years to come.

10

The ENHET kitchen has a 10-year guarantee. Find out more on page 149



ENHET cabinets

This range of ENHET cabinets gives you a great opportunity to use your space efficiently. Choose the ones that fits both your needs and personality.



ENHET wall cabinet with shelf, 60×30×60 cm. This wall cabinet turns the space over your extractor hood into useful storage space. It is perfect for bottles and jars – giving you a good overview.

| | |
|-------|------------|
| White | 904.404.29 |
|-------|------------|



ENHET wall cabinet with 2 shelves. A wall cabinet with 2 shelves that makes good use of your wall space and puts the things you use often within easy reach.

| | |
|--------------------|------------|
| 40×15×75 cm | |
| White | 104.404.47 |
| Grey | 004.404.43 |
| 60×15×75 cm | |
| White | 204.404.56 |
| Grey | 404.404.55 |
| 80×15×75 cm | |
| White | 404.404.41 |
| Grey | 304.404.51 |



ENHET wall cabinet with 2 shelves. This wall cabinet with 2 shelves puts bottles, jars and things often used within easy reach.

| | |
|--------------------|------------|
| 40×30×75 cm | |
| White | 104.404.28 |
| 60×30×75 cm | |
| White | 504.404.12 |
| 80×30×75 cm | |
| White | 604.404.16 |



ENHET high cabinet with 4 shelves. This high cabinet with 4 shelves provides ample storage without taking up too much floor space. Perfect for making the best use of wall space in smaller spaces..

| | |
|---------------------|------------|
| 30×30×180 cm | |
| White | 104.404.52 |
| Grey | 204.404.42 |



ENHET high cabinet for fridge/freezer. This cabinet offers a discreet hiding place for an integrated fridge/freezer. It gives a uniform look, allowing fridge/freezer to blend in with the rest of your kitchen.

| | |
|---------------------|------------|
| 60×60×210 cm | |
| White | 305.141.97 |



ENHET base cabinet with shelf. A cabinet with a shelf that provides space for storing cooking equipment like bowls or small appliances.

| | |
|--------------------|------------|
| 40×60×75 cm | |
| White | 104.404.14 |
| 60×60×75 cm | |
| White | 204.404.23 |
| 80×60×75 cm | |
| White | 804.404.20 |



ENHET base cabinet with 3 drawers. This cabinet has 3 drawers for convenient storage of the smallest utensils to the largest pots. Tailor the space inside your drawers with interior organisers, sold separately.

| | |
|--------------------|------------|
| 40×60×75 cm | |
| White | 404.404.22 |
| 60×60×75 cm | |
| White | 204.404.18 |
| 80×60×75 cm | |
| White | 304.404.27 |



ENHET corner panel. Want to build a corner solution with base cabinets? This panel opens up to more possibilities to utilise your space. Combine with ENHET base cabinet 80 cm and ENHET door (40×75 cm or 60×75 cm) to build a corner solution. Cabinet and door sold separately.

| | |
|------------|------------|
| White | 804.404.15 |
| Grey | 604.811.81 |
| Oak effect | 404.811.82 |



ENHET base cabinet for oven with drawer. This cabinet is designed for a built-in oven (60×60 cm) and you have the option to combine it with either a built-in hob or a portable hob. There is extra storage space in the drawer under the oven for frying pans, baking trays or chopping boards.

| | |
|--------------------|------------|
| 60×60×75 cm | |
| White | 304.404.13 |



ENHET base cabinet for sink. This cabinet is designed for sink and tap with space for piping in the back of the cabinet. May be completed with HÅLLBAR waste sorting solution.

| | |
|--------------------|------------|
| 60×60×75 cm | |
| White | 504.404.26 |

Legs and plinth for closed cabinet



ENHET legs for cabinet, 12.5 cm, 2-p. Fits ENHET base and high cabinets.

| | |
|------------|------------|
| White | 104.490.18 |
| Anthracite | 904.490.19 |



ENHET plinth, 180×12 cm.

| | |
|-------|------------|
| White | 704.563.55 |
|-------|------------|

ENHET open frames

Open storage creates a dynamic and airy kitchen atmosphere. ENHET open frames allows you to express your personality through the items you choose to arrange and display on the shelves. For even more personalisation opportunities, the frames come in different colours that you can mix and match any way that suits you. Open storage also provides a good overview

of all your kitchen items and you can keep the things you use the most on the shelves for easy access. With a mix of closed and open storage, it is possible to create a kitchen that doesn't only make preparing your everyday meals a breeze, but is a real eye-catcher that inspires you to cook and your friends and family to keep you company.



ENHET wall frame with shelves - 15 cm deep.

40x15x75 cm

| | |
|------------|------------|
| White | 704.489.35 |
| Anthracite | 304.489.37 |

60x15x75 cm

| | |
|------------|------------|
| White | 004.489.67 |
| Anthracite | 804.489.68 |



ENHET wall frame with shelves - 30 cm deep.

40x30x75 cm

| | |
|------------|------------|
| White | 904.489.44 |
| Anthracite | 604.489.45 |

60x30x75 cm

| | |
|------------|------------|
| White | 204.489.71 |
| Anthracite | 004.489.72 |



ENHET high frame with shelves.

30x30x180 cm

| | |
|------------|------------|
| White | 404.489.46 |
| Anthracite | 204.489.47 |

60x30x180 cm

| | |
|------------|------------|
| White | 804.489.54 |
| Anthracite | 704.489.64 |



ENHET base frame with shelves.

40x60x75 cm

| | |
|------------|------------|
| White | 204.489.52 |
| Anthracite | 004.489.53 |

60x60x75 cm

| | |
|------------|------------|
| White | 304.489.75 |
| Anthracite | 104.489.76 |



ENHET legs for open frames, 12.5 cm, 2-p. Fits ENHET base and high frames.

| | |
|------------|------------|
| White | 404.599.11 |
| Anthracite | 204.599.12 |



ENHET assembly kit for kitchen island (solution).

This assembly kit lets you build the kitchen island you've always dreamed of. It's easy and it adds a new dimension to your kitchen. It allows you to connect 2 or 3 open ENHET base frames to create a freestanding kitchen island. Worktop and FIXA worktop support, sold separately.

40 cm

| | |
|------------|------------|
| White | 204.801.74 |
| Anthracite | 704.801.76 |

60 cm

| | |
|------------|------------|
| White | 704.801.81 |
| Anthracite | 104.801.79 |

ENHET accessories for open frame

You can easily add ENHET accessories to extend the use of your combination. And best of all – you don't have to drill.



ENHET hanging shelf insert, 26×28×15 cm. This insert adds a new dimension to your ENHET frame. It divides the storage space and makes room for more things in no time – simply hang it in the grooves of the frame and get organised. You don't need any tools and don't have to drill holes in the wall.

| | |
|------------|------------|
| Anthracite | 704.657.55 |
|------------|------------|



ENHET swivel shelf, 40×21 cm. Tired of looking for those things that tend to disappear in the kitchen? You can easily solve this by attaching this handy swivel shelf to any of the wall frames in the ENHET series. You can find and reach the things you need by turning the shelf. Perfect to have as a spice rack to keep all the flavours close at hand when you are cooking.

| | |
|------------|------------|
| Anthracite | 204.657.34 |
|------------|------------|



ENHET hook, 6×24 mm, 2-p. You can hang these hooks in the grooves under the ENHET frames – or on ENHET rail for hooks that is sold separately. With these hooks, you turn unused space into practical storage space. Perfect for everything from utensils and towels in the kitchen. Hang SKATTÅN containers on the hooks to make room for even more, sold separately.

| | |
|------------|------------|
| White | 004.657.54 |
| Anthracite | 604.657.51 |



ENHET rail for hooks. With this rail you can utilise every centimetre under your ENHET frame for storage. In no time, you can create plenty of space for cutlery or utensils by adding ENHET hooks and SKATTÅN container, sold separately.

| | |
|--------------|------------|
| 37 cm | |
| White | 104.657.39 |
| Anthracite | 704.657.36 |

| | |
|--------------|------------|
| 57 cm | |
| White | 504.657.42 |
| Anthracite | 704.657.41 |



SKATTÅN container, 12×34 cm. Instead of storing things in drawers, you can have everything from cutlery to accessories close at hand. Hang this container on a hook under ENHET frames to quickly turn the space into practical storage.

| | |
|--|------------|
| | 304.657.57 |
|--|------------|



TAVELÅN tray, 2-p. With these decorative trays you make room for a lot, even in small spaces. If you stack them, they'll take up even less space. Fits perfectly in ENHET wall frames, but you can of course use them wherever you want.

| | |
|--|------------|
| | 504.657.56 |
|--|------------|

KNOXHULT kitchen

When basic functions and low price matters

To make it easy for you, we've already combined ready sets with cabinets, doors, worktops, shelves, drawers, sink, tap and water-trap. All you have to do is to pick the finishing touches, like knobs, handles and appliances. If you bring it home from your local IKEA store in the morning, you can have it installed and ready for cooking

a late supper in the evening. Go to ikea.co.uk to see all the ready-made sets. You can of course pick and choose exactly the KNOXHULT cabinets you want, too. On the next pages you'll see what choices you have.





KNOXHULT is functional and easy to plan. Pick the combinations you like, then choose appliances, sinks, taps knobs and handles. Done!

Base cabinets



KNOXHULT base cabinet for built-in oven, 180 cm. Customise your storage with the smooth-running drawer and adjustable shelves. The laminate worktop is moisture-, heat- and scratch resistant. Frame and fronts are coated with foil which gives a scratch-resistant surface that is easy to keep clean. You can easily mount the door front in the correct position, as the hinges are adjustable in height, depth and width. Stands steady on uneven floors because it has adjustable feet

| | |
|------------------|------------|
| White | 703.267.88 |
| Grey | 203.267.95 |
| Wood effect/grey | 603.268.02 |
| High-gloss white | 303.268.08 |



KNOXHULT base cabinet with doors and drawer, 120 cm. Customise your storage with the smooth-running drawer and adjustable shelves. The laminate worktop is moisture-, heat- and scratch resistant. The frame and fronts are coated with foil which gives a scratch-resistant surface that is easy to keep clean. You can easily mount the door front in the correct position, as the hinges are adjustable in height, depth and width. Stands steady on uneven floors because it has adjustable feet.

| | |
|------------------|------------|
| White | 303.267.90 |
| Grey | 503.267.94 |
| Wood effect/grey | 803.268.01 |
| High-gloss white | 503.268.07 |



KNOXHULT corner base cabinet, 100 cm. Customise your kitchen by building an L- or U-shaped kitchens. The laminate worktop is moisture-, heat- and scratch resistant. Frame and fronts are coated with foil which gives a scratch-resistant surface that is easy to keep clean. You can easily mount the doors to open left or right and the hinges can be adjusted to position the doors at the exact height, width and depth. Stands steady on uneven floors because it has adjustable feet.

| | |
|------------------|------------|
| White | 004.861.29 |
| Grey | 204.861.28 |
| High-gloss white | 404.861.27 |



KNOXHULT base cabinet with drawers, 40 cm. Customise your storage with the smooth-running drawers. The laminate worktop is moisture-, heat- and scratch resistant. The frame and fronts are coated with foil which gives a scratch-resistant surface that is easy to keep clean. Stands steady on uneven floors because it has adjustable feet.

| | |
|------------------|------------|
| White | 903.267.87 |
| Grey | 703.267.93 |
| Wood effect/grey | 403.267.99 |
| High-gloss white | 703.268.06 |

Wall cabinets



KNOXHULT wall cabinet with doors, 120x75 cm. Customise your storage with the adjustable shelves. The frame and fronts are coated with foil which gives a scratch-resistant surface that is easy to keep clean. You can easily mount the door front in the correct position, as the hinges are adjustable in height, depth and width.

| | |
|------------------|------------|
| White | 903.267.92 |
| Grey | 003.267.96 |
| Wood effect/grey | 403.268.03 |
| High-gloss white | 103.268.09 |



KNOXHULT wall cabinet with door, 60x60 cm. Customise your storage with the adjustable shelves. The frame and fronts are coated with foil which gives a scratch-resistant surface that is easy to keep clean. You can easily mount the door front in the correct position, as the hinges are adjustable in height, depth and width. Sized to have above your extractor hood.

| | |
|------------------|------------|
| White | 103.267.91 |
| Grey | 603.267.98 |
| Wood effect/grey | 903.268.05 |
| High-gloss white | 703.268.11 |



KNOXHULT wall cabinet with door, 40x75 cm. Customise your storage with the adjustable shelves. The frame and fronts are coated with foil which gives a scratch-resistant surface that is easy to keep clean. You can easily mount the door front in the correct position, as the hinges are adjustable in height, depth and width.

| | |
|------------------|------------|
| White | 503.267.89 |
| Grey | 803.267.97 |
| Wood effect/grey | 203.268.04 |
| High-gloss white | 903.268.10 |



KNOXHULT wall cabinet, 60x75 cm. Customise your storage with the adjustable shelves. The frame and fronts are coated with foil which gives a scratch-resistant surface that is easy to keep clean. You can easily mount the door front in the correct position, as the hinges are adjustable in height, depth and width.

| | |
|------------------|------------|
| White | 404.963.10 |
| Grey | 804.963.08 |
| High-gloss white | 604.963.09 |

Accessories



STÖDJA cutlery tray, 31x50 cm.

White 501.772.23



STÖDJA utensil tray, 20x50 cm.

White 401.772.28



SLAGSIDA LED worktop lighting. Designed for KNOXHULT kitchen system. Dimmable in two steps with built in touch sensor. Easy installation as plug goes directly in wall socket. This luminaire contains built in LED lamps of the energy classes A++ to A. The lamps can not be changed in the luminaire.

| | |
|--------------------|------------|
| 40 cm. 5.2W, 320lm | 804.000.61 |
| 60 cm. 7W, 480 lm | 003.428.57 |



STÖDJA cutlery tray, 51x50 cm.

White 001.772.25



SMÄCKER cutlery tray, 31x26 cm.

Grey 902.417.88



SUNNERSTA adjustable rack with hooks, W45.7 cm.
Min. height 45 cm, max. height 65 cm.

White 204.409.51



SUNNERSTA container, W12xD11xH13 cm. Fits SUNNERSTA rail, trolley and mini-kitchen, adjustable rack, rail, trolley and mini-kitchen.

| | |
|--------------|------------|
| White | 503.037.35 |
| Light pink | 605.561.81 |
| Light yellow | 105.561.74 |
| Pale green | 005.561.79 |



SUNNERSTA hook, 5-p.

White 403.037.26



SUNNERSTA kitchen roll holder,
W24.5xD11.5xH4.7cm. Max. load 1 kg.

White 204.439.21



SUNNERSTA rail with 4 hooks/2 containers.
L60xH14xD13 cm. Including 1 rail, 2 containers and 4 hooks.

White 404.545.60



SUNNERSTA shelf 25, W25xD14xH5 cm. Max. load 2 kg.

White 904.439.27



SUNNERSTA shelf/dish drainer,
W36.5xD15 cm. Max. load 4 kg.

White 304.439.30



SUNNERSTA kitchen organiser set, no drill/dish drainer/shelf/kitchen roll holder/container. W23 cm. Min. height 45 cm, max height 65 cm.

White 193.384.26



SUNNERSTA kitchen organiser set, no drill/kitchen roll holder/dish drainer/2 containers. W23 cm. Min. height 45 cm, max height 65 cm.

White 793.384.28



SUNNERSTA kitchen organiser set, no drill/kitchen roll holder/dish drainer/container. W23 cm. Min. height 45 cm, max height 65 cm.

White 693.384.24

Kitchenettes

Not all of us have a lot of space or money for a larger, built-in kitchen - and for different reasons, many of us are just looking for a practical solution that isn't so complicated. Our range of kitchenettes, offers all the ingredients for this very important function in clever, compact designs. You can choose between our basic or modern expres-

sions and add TILLREDA appliances to customize your culinary space according to your needs. It's all there, personal, functional, affordable and easy to install. And there's no need to part from your beloved kitchenettes when you move because you can easily take it with you. Simple as that.



ÄSPINGE kitchenette

Tight on space?

ÄSPINGE kitchenette is quick and easy to install, yet doesn't compromise on quality, function or expression. Simple to assemble, place the wall shelves left, right or centered, display kitchen knick-knacks on the

splash back shelf and drawer organisers to keep things tidy. Add your choice of TILLREDA appliances for a fully functional kitchen experience with LAGAN fridge as a freestanding option. Make your space yours.



ÄSPINGE kitchenette. Included: Kitchen frame, hanging wall shelves, backsplash with shelf, worktop, doors, drawer boxes, 2 cutlery trays, 12 hooks, 2 handles, legs, hinges and fittings. FYNDIG sink, LAGAN mixer tap, LILLVIKEN water trap also included. For use with freestanding appliances only.

W120×D60×H202 cm 794.782.11

10

ÄSPINGE kitchenette has a 10-year guarantee. Find out more on page 149. FYNDIG sink is not included, or more info see p.113

ÖNNERUP kitchenette

A kitchenette with a big heart

ÖNNERUP kitchenette with both open and closed storage has a traditional, crafted character that feels warm and inviting. Complete with TILLREDA appliances and get cooking!

ÖNNERUP kitchenette can also serve as a freestanding buffet, bringing a warm and traditional look to your dining space. Open shelves for things you want to show and closed storage to hide the clutter.



ÖNNERUP kitchenette, off-white. Included: Kitchen frame, worktop, 4 shelves, 2 doors and 3 drawers, 6 ENERYDA knobs, FYNDIG sink, GLYPEN tap and LILLVIKEN water trap. For use with freestanding appliances only.

130×64×219 cm 294.783.55



ÖNNERUP kitchenette, off-white. Included: Kitchen frame, worktop, 4 shelves, 2 doors and 3 drawers. Complete with knobs and handles.

130×64×219 cm 005.002.86

10

ÖNNERUP kitchenette has a 10-year guarantee. Find out more on page 149. FYNDIG sink is not included, or more info see p.113

SUNNERSTA mini-kitchen

Flexible and affordable

With SUNNERSTA mini-kitchen you can create an open and welcoming kitchen even if space is limited. It's also great for dorm rooms and guest houses. Use the hooks and containers to keep track of utensils, and use the trolley as a utility surface when there's a lot going on

in the kitchen. By adding TILLREDA appliances, you'll have everything you need. This affordable and flexible kitchen is easy to buy, get home, install and move to new places.



SUNNERSTA mini-kitchen. 5 hooks included. This furniture must be fixed to the wall. LILLVIKEN water trap and strainer are included in the price, but packaged separately.

W112×D56×H139 cm

791.396.88



SUNNERSTA mini-kitchen. 5 hooks included. This furniture must be fixed to the wall. To be completed with LILLVIKEN water trap and strainer.

W112×D56×H139 cm

903.020.79

Accessories



SUNNERSTA hook, 5-p.

White

403.037.26



SUNNERSTA container, W12×D11×H13 cm. Fits SUNNERSTA rail and mini-kitchen, adjustable rack, rail, trolley and mini-kitchen.

White 503.037.35

Light pink 605.561.81

Light yellow 105.561.74

Pale green 005.561.79



SUNNERSTA kitchen roll holder, white. Max. load 1 kg.

W24.5×D11.5×H4.7 cm 204.439.21

W28.4×11.5×H4.7 cm 305.098.03



SUNNERSTA rail with 4 hooks/2 containers. L60×H14×D13 cm. Including 1 rail, 2 containers and 4 hooks.

White

404.545.60



SUNNERSTA shelf/dish drainer, W36.5×D15 cm. Max. load 4 kg.

White

304.439.30



SUNNERSTA shelf 25, W25×D14×H5 cm. Max. load 2 kg.

White


904.439.27



SKATTAN container, 12×34 cm. Instead of storing things in drawers, you can have everything from cutlery to accessories close at hand. Hang this container on a hook under ENHET frames to quickly turn the space into practical storage.

304.657.57





ENKÖPING
Drawer front, 60×40 cm,
brown walnut effect.
205.165.97

Lighting and home electronics

A brighter kitchen life

Good lighting is an essential part of any kitchen. That's why we have different families of integrated lighting series that are perfectly dimensioned to fit our kitchen cabinets. Having integrated lighting in your kitchen is a great way to show off your favourite dinnerware behind glass doors or in drawers. And, good lighting brings alive your cabinet doors, worktop and wall panels, too.

Get an even better kitchen life with the ability to dim and turn off and on light wirelessly. All you need is RODRET wireless dimmer or STYRBAR remote control.

Or, connect your smart lighting to DIRIGERA and control any light, together with other smart products such as speakers or air purifiers in the IKEA Home smart app.

Sound is a powerful mood booster, much in the same way as light. Both are crucial for creating the right atmosphere at home and both are deeply personal – each of us has our own unique preferences in terms of volume, brightness, type, and genre. Like light, sound is culturally and socially important; it brings people together.



Kitchen installation

If you want we can install all your kitchen lighting for you, as a part of our Kitchen Installation service. See more on **page 04**.



Drawer lighting simplifies finding what you need even during those midnight kitchen raids. Opening and closing the drawer turns the light on and off automatically.



Spotlights provide a focused light that is good for lighting smaller areas and behind glass doors.



Worktop lighting should give you a clean, clear view of all the work you're doing in the kitchen.



Cabinet lighting illuminates your favourite kitchen doors and creates cosy mood light in the entire kitchen.

Lighting for METOD

MITTLED series



MITTLED has compact design and is easy to install. MITTLED uses only one connection cord per row of light as each element connects to the next one in easy way.



MITTLED LED worktop lighting. Matches your cabinet sizes and features a compact design. To be completed with TRÅDFRI LED driver, VÅGDAL connection cord and FÖRNIMMA power supply cord sold separately. Dimmable with RODRET wireless dimmer or STYRBAR remote control or in the IKEA Home smart app with DIRIGERA hub, sold separately.

| | | |
|---------------------|--|------------|
| Aluminium- colour | | |
| 20 cm, 2.0W, 150lm | | 405.383.10 |
| 30 cm, 3.0W, 240lm | | 405.283.87 |
| 40 cm, 4.0W, 300lm | | 605.285.60 |
| 60 cm, 5.5W, 480lm | | 105.285.72 |
| 80 cm, 7.5W, 640lm | | 905.285.92 |
| White | | |
| 20 cm, 2.0W, 150lm | | 605.284.47 |
| 30 cm, 3.0W, 4240lm | | 705.284.99 |
| 40 cm, 4.0W, 300lm | | 905.285.68 |
| 60 cm, 5.5W, 480lm | | 805.285.83 |
| 80 cm, 7.5W, 640lm | | 305.286.13 |



MITTLED LED lighting strip for drawers. In an IKEA kitchen you can get lighting for all your drawers, that way you'll always be able to find what you need even during those midnight kitchen raids. Opening and closing the drawer turns the light on and off automatically. To be completed with ANSLUTA LED driver with cord 19W, sold separately.

| | | |
|--------------------|--|------------|
| White | | |
| 36 cm, 2.0W, 50lm | | 304.635.17 |
| 56 cm, 2.0W, 50lm | | 804.635.48 |
| 76 cm, 3.5W, 100lm | | 905.292.09 |



MITTLED LED spotlight. Provides a focused light that is good for lighting smaller area and adds a decorative finish to your kitchen. To be completed with TRÅDFRI LED driver and FÖRNIMMA power supply cord sold separately. Dimmable with RODRET wireless dimmer or STYRBAR remote control or in the IKEA Home smart app with DIRIGERA hub, sold separately. Can be installed in its housing or integrated into coving. Ø6.8 cm.

| | | |
|------------------|--|------------|
| Aluminium-colour | | |
| 2.2W, 150lm | | 104.353.99 |
| White | | |
| 2.2W, 150lm | | 304.353.98 |
| Black | | |
| 2.2W, 150lm | | 604.721.34 |

IRSTA series



IRSTA is a modern and very thin LED lighting, which covers the entire underside of the wall cabinet to illuminate an even light over the entire worktop.



IRSTA LED worktop lighting. A modern and very thin LED lighting which covers the entire underside of the wall cabinet and therefore provides an even lighting spread over the entire worktop. To be completed with TRÅDFRI LED driver and FÖRNIMMA power supply cord, sold separately. Dimmable with RODRET wireless dimmer or STYRBAR remote control or in the IKEA Home smart app with DIRIGERA hub, sold separately.

| | | |
|-------|-------------|------------|
| 40 cm | 4.5W, 300lm | 104.069.43 |
| 60 cm | 7W, 450lm | 204.069.47 |
| 80 cm | 8.5W, 600lm | 404.069.51 |

Cabinet lighting



A cabinet's best friend – it lights things up inside and creates a cozy atmosphere in the room. Use it on top of a wardrobe in the bedroom, or together with storage in the living room, kitchen or hallway. YTBERG and TVÅRDRAG are dimmable with RODRET wireless dimmer or STYRBAR remote control (sold separately) to control up to 10 smart light sources which will react in the same way – dim, switch off, turn on. The bracket makes it possible to slide the lamp back and forth. You easily attach it with screws – or with double-sided adhesive tape on glass and metal surfaces. You can connect in line max 6 units.



YTBERG cabinet lighting. You can bend, angle and move this slim lamp sideways to direct the soft light precisely over your cabinet. A perfect choice if there is little space between the top and the ceiling. Dimmable with RODRET wireless dimmer or STYRBAR remote control or in the IKEA Home smart app with DIRIGERA hub, sold separately.

| | |
|-------|------------|
| Black | 605.278.91 |
| White | 005.168.19 |



TVÅRDRAG cabinet lighting. With this lamp, it's simple to direct the light precisely where you want it over your cabinet or wardrobe. And since the lamp head can be angled, you can even direct light on the contents if you like. Dimmable with RODRET wireless dimmer or STYRBAR remote control or in the IKEA Home smart app with DIRIGERA hub, sold separately.

| | |
|-------|------------|
| Black | 605.168.21 |
|-------|------------|

Complete your combination with lighting

How to build

MITTLED LED cabinet lighting is easy to install by yourself.

- When you start building your METHOD kitchen system, you must first consider the widths of your cabinets. E.g. for a cabinet with a width of 60 cm, you'll need the MITTLED lighting strip 60 cm too.
- Choose the number of MITTLED lighting strips that you need. To be completed with TRÅDFRI LED driver, VÅGDAL connection cord and FÖRNIMMA power supply cord sold separately.
- Add the TRÅDFRI driver. For the 10W driver you can connect up to 3 units to the driver, as long as the total wattage does not exceed 10W. For the 30W driver you can connect more than 9 lights if they don't exceed 30W. TRÅDFRI drivers need to be connected to the plug with a FÖRNIMMA power cable.
- Add RODRET wireless dimmer or STYRBAR remote control to dim your lighting. Pair the dimmer to the TRÅDFRI driver and the entire combination will dim at the same time.
- Add the DIRIGERA hub to control MITTLED connected lighting from the IKEA Home smart app in different ways together with other smart lighting product in your home.
- When you start to plan your base cabinet solution start to think where you need a drawer light that will help you to find tools or see the content of the base cabinet. The drawer lights can be connected to ANSLUTA driver 19W.

Basic parts



MITTLED LED worktop lighting, lighting strip for drawer, spotlight



TRÅDFRI LED drivers



VÅGDAL connection cord



FÖRNIMMA power supply cord



FÖRNIMMA intermediate connection cord



RODRET wireless dimmer



STYRBAR remote control

Installation accessories



DIRIGERA hub

How to mount integrated lighting on METOD kitchen

There are a few different ways to mount integrated lighting on METOD kitchen solutions, see examples below.

The detailed information on how to do this is available in the Assembly Instructions for your products.

METOD integrated lighting



Over cabinet lighting



Spotlight in cabinet



Lighting strip under wall cabinet



Drawer lighting

Lighting for ENHET and KNOXHULT

SKYDRAG series



Lighting creates atmosphere in homes and makes everyday life easier. This LED lighting strip is specially designed for the ENHET series, but is of course just as easy to install in an existing kitchen. You can also use SKYDRAG for KNOXHULT kitchen.



SKYDRAG LED worktop/wardrobe lighting strip with sensor, dimmable.

| | |
|--------------|------------|
| 40 cm | |
| White | 905.291.10 |
| Anthracite | 505.291.07 |
| 60 cm | |
| White | 105.291.09 |
| Anthracite | 305.291.08 |
| 80 cm | |
| White | 705.291.11 |

Cords and IKEA LED driver



FÖRNIMMA power supply cord 3.5m. With this cord, you can connect up to 10 series-connected lamps to the power grid – and turn on, turn off and dim all of them at the same time with RODRET wireless dimmer and STYRBAR remote control.

| | |
|--|------------|
| | 104.468.83 |
|--|------------|



FÖRNIMMA intermediate connection cord. Can be used as a direct connection between TRÅDFRI LED drivers, e.g. between two sections of wall cabinets, with one single connection to the mains supply.

| | |
|--------|------------|
| L0.7 m | 903.947.00 |
| L2 m | 303.946.99 |



VÅGDAL connection cord, 3.5 m. With this cord your can connect MITTLED worktop lighting with IKEA LED driver.

| | |
|-------|------------|
| White | 704.636.00 |
|-------|------------|



ANSLUTA LED driver 19W. Use this driver if you want turn all connected light sources on and off with a single switch.

| | |
|-------|------------|
| White | 704.058.65 |
|-------|------------|

Complete your combination with lighting

How to build

SKYDRAG LED cabinet lighting is easy to install by yourself.

- When you start building your system, you must first consider the widths of your cabinets. E.g. for a cabinet with a width of 60 cm, you'll need the SKYDRAG lighting strip with sensor 60 cm too.
- Choose the number of SKYDRAG lighting strips that you need.
- Add the TRÅDFRI driver, you can connect up to 3 or 9 units to the driver, as long as the total wattage does not exceed 10W or 30W. TRÅDFRI drivers need to be connected to the plug with a ANSLUTA power cable.
- RODRET wireless dimmer or STYRBAR remote control to dim your lighting. Pair the dimmer to the TRÅDFRI driver and the entire combination will dim at the same time.
- Add the DIRIGERA hub to control SKYDRAG connected lighting from the IKEA Home smart app in different ways together with other smart lighting product in your home.

Basic parts



SKYDRAG
LED worktop/wardrobe
lighting strip with sensor



TRÅDFRI
LED drivers



FÖRNIMMA
power supply cord



FÖRNIMMA
intermediate
connection cord



RODRET wireless
dimmer



STYRBAR
remote control

Installation accessories



DIRIGERA hub

Combination



| Product name | Art no | Quantity |
|--|------------|----------|
| SKYDRAG LED worktop/wardrobe lighting strip with sensor, 40 cm, dimmable, white | 955.035.87 | 3 pcs |
| TRÅDFRI driver for wireless control, 30W, smart, grey | 603.426.56 | 1 pc |
| RODRET wireless dimmer | 205.281.28 | 1 pc |
| FÖRNIMMA power supply cord, 3,5 m | 504.468.81 | 1 pc |

How to mount SKYDRAG for ENHET kitchen series

There are a few different ways to mount SKYDRAG on ENHET open and closed solutions, see examples below.

The detailed information on how to do this is available in the Assembly Instructions for your products.

ENHET open frames



On top of frame



Under shelf

ENHET closed solutions



Inside of frame



Under cabinet

Smart home

It's easy to create smarter everyday kitchen moments with lighting and speakers. By connecting TRÅDFRI driver to our hub for smart products, you get even more out of it and can also control it, together with other smart products, in the IKEA Home smart app.



DIRIGERA hub.

The hub is the heart of a smart home as it enables you to connect and control your smart products in the IKEA Home smart app. With the app, you can dim lights, adjust speakers, control rooms, connect to voice assistants, and more.

White 105.034.06



TRÅDFRI LED driver. To be completed with FÖRNIMMA power supply cord, sold separately. Can be used with RODRET wireless dimmer or STYRBAR remote controls and DIRIGERA hub.

Up to 10W 503.561.87
Up to 30W 603.426.56



RODRET dimmer. Now it's really easy for anyone to use smart lighting. With RODRET wireless dimmer you can control your light sources – turn on, turn off and dim so you always have the right light and mood at home.

205.281.28



STYRBAR remote controls. With this remote controls you can turn on and off, switch between different tones and dim for the right mood.

Stainless steel 104.352.24
White 304.883.63



We continuously update the IKEA Home smart app with new and improved features for an even more fun and convenient way to use your smart home.



SYMFONISK speakers



Sound has the ability to change the atmosphere at home dramatically. So, turning a grey day into a great day is only a touch of a button away.



SYMFONISK sound remote gen 2.

With this sound remote, you can control all SYMFONISK and Sonos speakers from the kitchen or wherever you are at home. The remote also has two shortcut buttons that allows you to activate your personalised smart home scenes.

White 905.246.07



SYMFONISK speaker lamp with Wi-Fi, glass shade. Fancy great sound from a Wi-Fi speaker that's also a lamp? SYMFONISK Wi-Fi speakers are a collaboration with Sonos, designed to blend into your home while giving you quality sound for music and podcasts.

Black 594.309.13
White 994.309.25



SYMFONISK Wi-Fi bookshelf speaker. Place the speaker horizontally or vertically, or mount it on the wall to use as a practical shelf. Also helps you to use your space optimally, while providing a rich sound that fills the entire room.

Black 505.065.73
White 505.065.87



Download the Sonos app to set up your SYMFONISK speakers and start streaming music from all devices – smartphones, tablets, and computers. When friends come over they can download the app and play DJ, too.



Worktops

Your kitchen is the heart of your home, it's a room for everyone! How it performs and how it looks are two important factors. Even though doors and drawer fronts are the main style decision you make when updating your kitchen, your worktop can have a big impact on the overall look. However, the perfect worktop is not just about completing the look of your kitchen, it has an impact on its functionality too. When picking the right worktop there are many factors to

consider, including your style, durability, maintenance, lifestyle and cost. Our worktops are available in pre-cut and custom-made as well as in a wide range of durable materials, finishes and thicknesses. Each surface has unique properties, with differing levels of water, wear and heat resistance.

How to choose your worktop:

01

What's your budget?
A stylish look does not have to cost a fortune, our worktops are available in wide range of materials and expressions, pre-cut as well as custom-made to perfectly fit your style, needs and wallet.

02

What kind of material do you prefer? When deciding on material, consider how robust you need your worktop to be, how much you are prepared to look after it, and how you want it to look in your kitchen scheme.

03

Custom-made worktops are made to fit your kitchen layout, you can order the exact length and depth you need, as well as cut-outs for your sink, tap and hob. **Pre-cut worktops** are available in different sizes, you can take yours home today and cut it to desired length.

25

All worktops have a 25-year guarantee. Find out more on page 149

Built to last

When we test our worktops we put them up against everything they'll face in your kitchen: liquids, oil, steam, heat, thumps, bumps and scratches. Once we're done we're so sure our worktops will last, we guarantee it.



Materials

Laminate

Laminate worktops are affordable, easy to maintain and there are lots of colours and expressions to choose from. They are made of laminate pressed onto particleboard. Both heat and pressure are applied to harden the surface and create a durable worktop.

Thick veneer

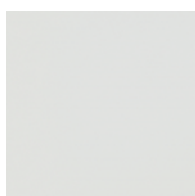
Thick wood veneer worktops offer the natural colour and grain of wood, adding warmth to your kitchen. They are pre-treated for quicker installation and can be sanded and treated when needed. The thick veneer technique allows us to create patterns and expressions that are otherwise difficult and expensive to achieve – with the efficient use of natural resources.

Laminate worktops 2.8 cm thick



EKBACKEN and LILLTRÄSK laminate worktops are 2.8 cm thick and have a straight edge. They are durable, easy to maintain, and come in an extensive range of colours and textures (standard, matte, high gloss and even soft-touch).

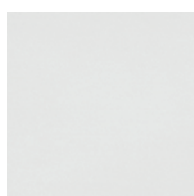
EKBACKEN laminate worktops are available as pre-cut (take home today) or custom-made, with more edge and size options. Pre-cut worktops can be cut to the exact length you need and finished with the edge strip included in the package.



LILLTRÄSK worktop, white, D63.5 cm.

Take home today:

| | |
|--------------|------------|
| L186×T2.8 cm | 502.427.23 |
| L246×T2.8 cm | 902.427.21 |
| L123×T2.8 cm | 004.798.74 |

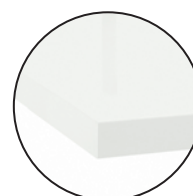


EKBACKEN worktop, double-sided, white with white edge, D63.5 cm.

Take home today:

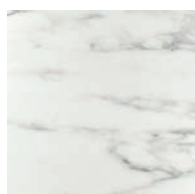
| | |
|--------------|------------|
| L186×T2.8 cm | 402.913.42 |
| L246×T2.8 cm | 202.913.43 |

Custom-made:*



EKBACKEN worktop, high-gloss white.

Custom-made:*

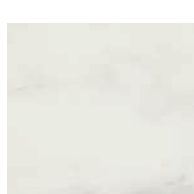


EKBACKEN worktop, white lively marble effect/laminate, D63.5 cm.

Take home today:

| | |
|--------------|------------|
| L186×T2.8 cm | 105.703.49 |
| L246×T2.8 cm | 705.703.51 |

Custom-made:*

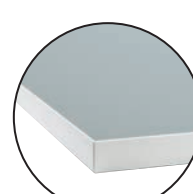


EKBACKEN worktop, white marble effect, D63.5 cm.

Take home today:

| | |
|--------------|------------|
| L186×T2.8 cm | 703.356.22 |
| L246×T2.8 cm | 003.356.25 |

Custom-made:*



EKBACKEN worktop, double-sided, light grey with white edge, D63.5 cm.

Take home today:

| | |
|--------------|------------|
| L186×T2.8 cm | 402.913.42 |
| L246×T2.8 cm | 202.913.43 |

Custom-made:*

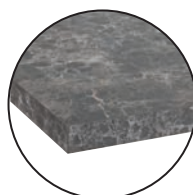
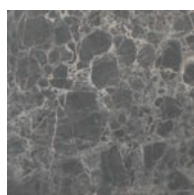


EKBACKEN worktop, light grey concrete effect, D63.5 cm.

Take home today:

| | |
|--------------|------------|
| L186×T2.8 cm | 303.954.39 |
| L246×T2.8 cm | 503.954.43 |

Custom-made:*

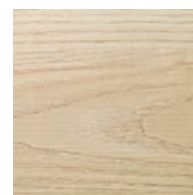


EKBACKEN worktop, dark grey/marble effect laminate, D63.5 cm.

Take home today:

| | |
|--------------|------------|
| L186×T2.8 cm | 403.971.69 |
| L246×T2.8 cm | 403.971.74 |

Custom-made:*

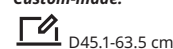


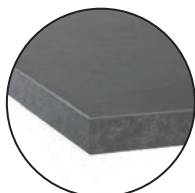
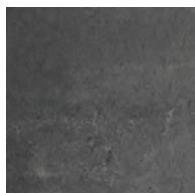
EKBACKEN worktop, ash effect, D63.5 cm.

Take home today:

| | |
|--------------|------------|
| L186×T2.8 cm | 503.376.17 |
| L246×T2.8 cm | 903.376.20 |

Custom-made:*






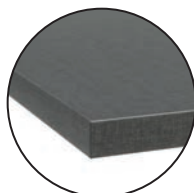
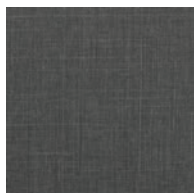
EKBACKEN worktop, concrete effect, D63.5 cm.

Take home today:

| | |
|--------------|------------|
| L186×T2.8 cm | 203.356.48 |
| L246×T2.8 cm | 603.356.51 |

Custom-made:*

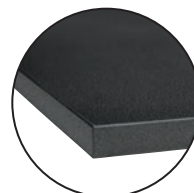
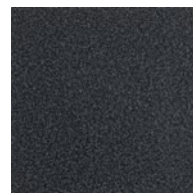
 D45.1-63.5 cm



EKBACKEN worktop, dark grey linen effect, D63.5 cm.

Custom-made:*

 D45.1-63.5 cm



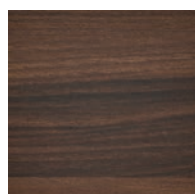
EKBACKEN worktop, black stone effect, D63.5 cm.

Take home today:

| | |
|--------------|------------|
| L186×T2.8 cm | 302.743.62 |
| L246×T2.8 cm | 902.743.64 |

Custom-made:*

 D45.1-63.5 cm



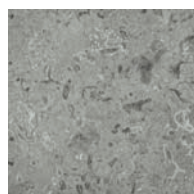
EKBACKEN worktop, brown walnut effect, D63.5 cm.

Take home today:

| | |
|--------------|------------|
| L186×T2.8 cm | 904.429.80 |
| L246×T2.8 cm | 104.429.84 |

Custom-made:*

 D45.1-63.5 cm




EKBACKEN worktop, limestone effect/laminate, D63.5 cm.

Take home today:

| | |
|--------------|------------|
| L186×T2.8 cm | 005.487.97 |
| L246×T2.8 cm | 005.488.01 |

Custom-made:*

 D45.1-63.5 cm



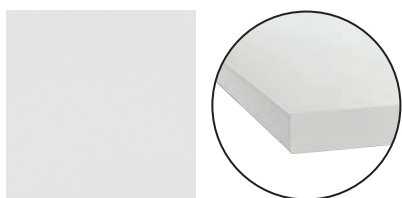
Design your own custom-made worktop and get an instant price estimate with our custom-made worktop calculator at [IKEA.co.uk](https://www.ikea.co.uk)

Laminate worktops 3.8 cm thick



SÄLJAN laminate worktops are 3.8 cm thick and have a rounded or straight edge. They are durable, easy to maintain, and come in a wide range of colours and textures (standard, high gloss and even double-sided).

SÄLJAN laminate worktops are available as pre-cut (take home today) or custom-made, with more edge and size options. Pre-cut worktops can be cut into the exact length you need and finished with the edge strip included in the package.



SÄLJAN worktop, white, D63.5 cm.

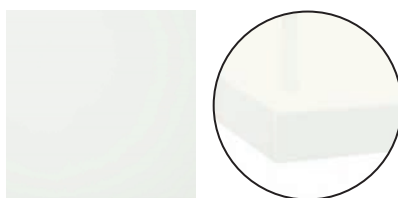
Take home today:

| | |
|--------------|------------|
| L186×T3.8 cm | 502.022.08 |
| L246×T3.8 cm | 602.022.17 |

Custom-made:*

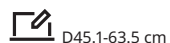


D45.1-63.5 cm

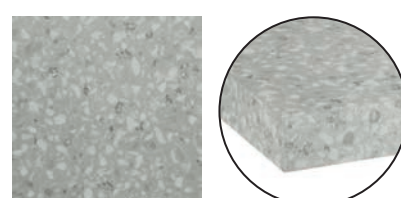


SÄLJAN worktop, high-gloss white.

Custom-made:*



D45.1-63.5 cm

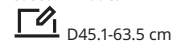


SÄLJAN worktop, light grey/mineral effect laminate, D63.5 cm.

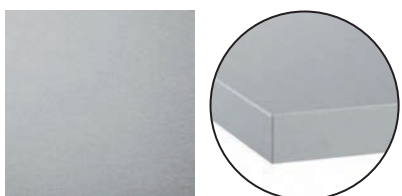
Take home today:

| | |
|--------------|------------|
| L186×T3.8 cm | 503.972.01 |
| L246×T3.8 cm | 603.972.05 |

Custom-made:*

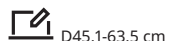


D45.1-63.5 cm



SÄLJAN worktop, aluminum effect.

Custom-made:*



D45.1-63.5 cm

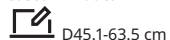


SÄLJAN worktop, beige stone effect.

Take home today:

| | |
|--------------|------------|
| L186×T3.8 cm | 000.000.00 |
| L246×T3.8 cm | 604.391.30 |

Custom-made:*



D45.1-63.5 cm

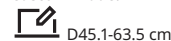


SÄLJAN worktop, oak effect.

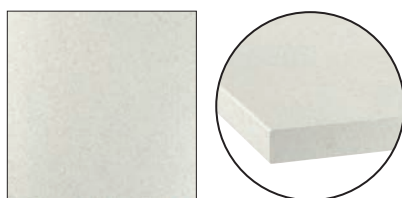
Take home today:

| | |
|--------------|------------|
| L186×T3.8 cm | 604.391.73 |
| L246×T3.8 cm | 804.392.09 |

Custom-made:*



D45.1-63.5 cm



SÄLJAN worktop, white/light grey stone effect/laminate.

Take home today:

| | |
|--------------|------------|
| L186×T3.8 cm | 205.568.71 |
| L246×T3.8 cm | 805.568.73 |

Custom-made:*



D45.1-63.5 cm



SÄLJAN worktop, black marble effect, D63.5 cm.

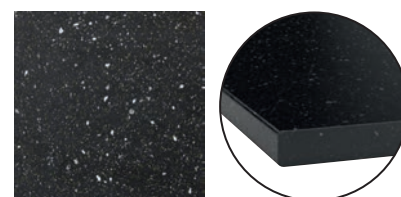
Take home today:

| | |
|--------------|------------|
| L186×T3.8 cm | 203.356.86 |
| L246×T3.8 cm | 003.356.87 |

Custom-made:*



D45.1-63.5 cm



SÄLJAN worktop, black mineral effect, D63.5 cm.

Take home today:

| | |
|--------------|------------|
| L186×T3.8 cm | 702.022.07 |
| L246×T3.8 cm | 702.022.12 |

Custom-made:*



D45.1-63.5 cm



SÄLJAN
Worktop, light grey/mineral
effect laminate. D63.5 cm.



Design your own custom-made worktop
and get an instant price estimate with our
custom-made worktop calculator at [IKEA.co.uk](https://www.ikea.co.uk)

Thick veneer worktops 2.8 and 3.8 cm thick



Natural and hard-wearing, wood brings a warm feeling to your kitchen and makes each worktop unique. With thick veneer worktops, a 3 mm layer of wood covers a particleboard core to add excellent stability.

This construction makes the worktop less sensitive to humidity and much less likely than solid wood to bend, split or crack. Also, with this technique, we can create new unique expressions using less wood, and reducing the impact on the environment.

The worktops are pre-treated with hard wax oil to create an easy-care surface for immediate use. Over time, it will only look better, gaining in character. They can be sanded and treated when needed meaning that they will age gracefully.

Thick veneer worktops come in the following crafted patterns: narrow stave, full plank, butcher-block, fine line and chevron.

Thick veneer worktops are available both as pre-cut (take home today) and custom-made option. Pre-cut worktops can be cut into the exact length you need and finished with the edge strip included in the package.



Ash

Ash is a blonde hard wood with a beautiful grain pattern. Ash is a tough and strong, yet elastic material with great resilience and finishing properties. It gets gradually darker with age. In its natural form it is heavy and gives a very solid feel.



Bamboo

Bamboo is a durable and stable hardwood with a uniform texture. The natural color of bamboo is similar to that of beech wood and adds a warm, natural feel to the kitchen – year after year. The material is renewable and sustainable, which makes it a great environmental choice.



Birch

Birch is fine-grained and pale in colour with a satin-like sheen that darkens with age. It often has knots or heartwood in cream or light brown which will give your worktop a unique and distinct natural look.



Beech

Beech is a hard wood with an even grain. It's durable and often used for furniture and worktops. When exposed to sunlight, beech ages from a light red tone to a more rose-brown colour. Beech characteristics are hardness, strength and good shock resistance.



Oak

Oak wood is exceedingly strong, heavy and durable. It is an attractive light colour with a prominent grain. Its colour ranges from light brown to a rich reddish-brown and it darkens beautifully with age.



Walnut

Walnut wood is relatively heavy, hard and resilient. The natural colour light brown to dark chocolate brown adds warmth to your kitchen decor. Walnut gets lighter in colour with age. It has a rich variation in colour and a decorative, curved grain pattern.

**PINNARP worktop, ash.****Take home today:**

| | |
|--------------|------------|
| L186×T3.8 cm | 003.722.98 |
| L246×T3.8 cm | 003.723.02 |

Custom-made:*

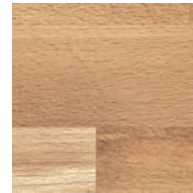
D45.1-63.5×T3.8 cm from /m

**KARLBY worktop, birch.****Take home today:**

| | |
|--------------|------------|
| L186×T3.8 cm | 103.351.87 |
| L246×T3.8 cm | 003.351.97 |

Custom-made:*

D45.1-63.5×T3.8 cm from /m

**KARLBY worktop, beech.****Take home today:**

| | |
|--------------|------------|
| L186×T3.8 cm | 503.351.85 |
| L246×T3.8 cm | 403.351.95 |

Custom-made:*

D45.1-63.5×T3.8 cm from /m

**KARLBY worktop, oak.****Take home today:**

| | |
|--------------|------------|
| L186×T3.8 cm | 703.351.89 |
| L246×T3.8 cm | 603.351.99 |

Custom-made:*

D45.1-63.5×T3.8 cm from /m

**MÖLLEKULLA worktop, oak.****Take home today:**

| | |
|--------------|------------|
| L186×T3.8 cm | 702.992.47 |
| L246×T3.8 cm | 502.992.48 |

Custom-made:*

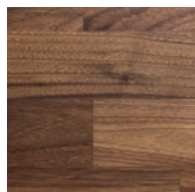
D45.1-63.5×T3.8 cm from /m

**SKOGSÅ worktop, oak.****Take home today:**

| | |
|--------------|------------|
| L186×T3.8 cm | 803.829.86 |
| L246×T3.8 cm | 003.829.90 |

Custom-made:*

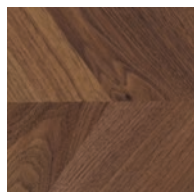
D45.1-63.5×T3.8 cm from /m

**KARLBY worktop, walnut.****Take home today:**

| | |
|--------------|------------|
| L186×T3.8 cm | 303.351.91 |
| L246×T3.8 cm | 003.352.01 |

Custom-made:*

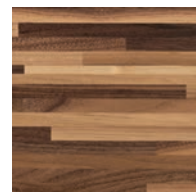
D45.1-63.5×T3.8 cm from /m

**BARKABODA worktop, walnut.****Take home today:**

| | |
|--------------|------------|
| L186×T3.8 cm | 903.314.68 |
| L246×T3.8 cm | 503.314.70 |

Custom-made:*

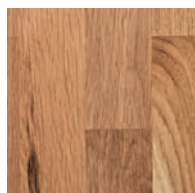
D45.1-63.5×T3.8 cm from /m

**PINNARP worktop, walnut.****Take home today:**

| | |
|--------------|------------|
| L186×T3.8 cm | 404.662.28 |
| L246×T3.8 cm | 204.662.29 |

Custom-made:*

D45.1-63.5×T3.8 cm from /m

**VRENA worktop, oak.****Take home today:**

| | |
|-------------|------------|
| L186×T2.8cm | 004.371.67 |
| L246×T2.8cm | 704.371.59 |

Custom-made:*

D45.1-63.5×T2.8 cm from /m

**New****HOLMARED worktop, bamboo/veneer.****Take home today:**

| | |
|--------------|------------|
| L186×T2.8 cm | 305.573.80 |
| L246×T2.8 cm | 705.573.83 |



Design your own custom-made worktop and get an instant price estimate with our custom-made worktop calculator at [IKEA.co.uk](https://www.ikea.co.uk)

Worktop accessories

Bar solution

Make your kitchen the social hub of your home with a bar solution. It gives you more space for working and makes a great place to eat and hang out with family and friends.



UTBY leg, stainless steel. UTBY leg gives steady support to your worktop, also on uneven floors.
88 cm 305.036.60



Protection and support for your worktop



FIXA worktop support fitting. FIXA worktop support fitting keeps your worktop stable and sturdy after installation.

Galvanised 702.746.28 /ea



FIXA diffusion barrier chrome-plated. Above a dishwasher, FIXA diffusion barrier shall be mounted to the underside of the worktop for added protection against moisture.

Chrome-plated 043.750.85

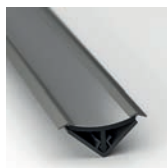


STOCKARYD wood treatment oil. For indoor use. To ensure that your worktop ages gracefully, treat it regularly with STOCKARYD wood treatment oil; it gives the surface a beautiful sheen, protects the wood and prolongs the life of the worktop.

500 ml 202.404.62

Finishing touches

Get the most out of your worktop with our worktop accessories and wall edging strips.



FIXA wall finishing strip, grey. Fills the gap between the wall and worktop. Fits all IKEA worktops. Can be used with various materials, such as tiles.

205.328.75



FIXA worktop cover strip. FIXA cover strip is recommended for straight-edge worktops only. Prevents water from penetrating between worktops.

63.5×1.8 cm

303.392.88



HANSBYN wall edging strip, 246 cm. Solid wood can be cut to the desired length, sanded and surface treated as needed. Can be used against a tiled wall as well.

| | |
|--------|------------|
| Birch | 904.890.05 |
| Oak | 604.612.77 |
| Walnut | 204.890.04 |



PINNARP
Worktop. Ash,
186×3.8 cm. 003.722.98

Big advantages of a custom-made worktop

Your custom-made worktop is made to fit your kitchen layout perfectly, with the least number of joints. You can order the exact length and depth you need for your kitchen island or bar solution as well as cut-outs for your sink, tap and hob.



Design your own custom-made worktop

Design your own custom-made worktop and wall panel and get an instant price estimate with our custom-made worktop calculator at [IKEA.co.uk](https://www.ikea.co.uk)



Cut-out for hob

Different edges

Custom-made wall panel

Hole for the tap

How to buy a custom-made worktop

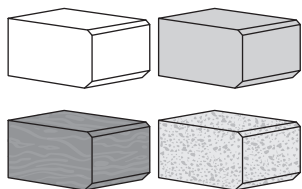


Custom-made the way you want it

Use our simple online calculator to design a custom-made worktop for your kitchen. You get an instant estimate of what everything will cost, too. You can choose different worktop in different styles and materials to personalise your kitchen just the way you want it. The custom-made worktop calculator makes it super easy to try out different options and compare their prices.

Check it out at [IKEA.co.uk](https://www.ikea.co.uk)

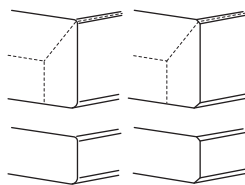
01



Material and colour

Choose between laminate, thick veneer, then choose a colour that makes the kitchen your own.

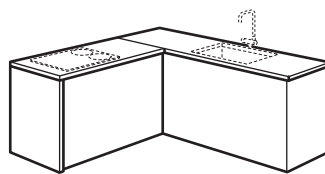
02



The worktop profiles

Choose the desired profile for the edges. Depending on the material you've chosen for your worktop, you have different options.

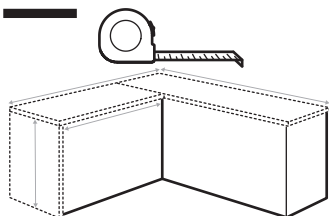
03



Cutouts

Select the cutouts for your kitchen space.

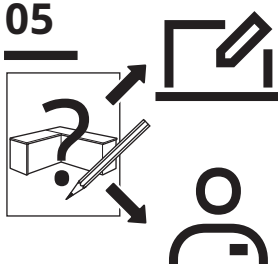
04



Take measurements

Then start to measure to see what size and shape of worktop you need. If you would like help with this, or with anything to do with measuring your kitchen, our measuring service can come to your home.

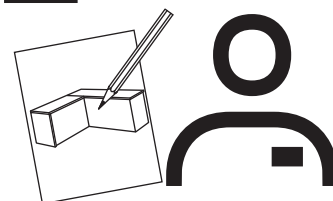
05



We're here to help

To design your custom-made worktop get help from an IKEA co-worker in the kitchen department at your local store, or use our online calculator.

06

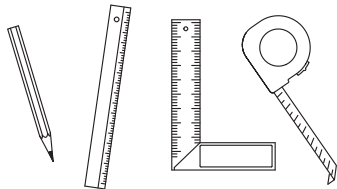


Order

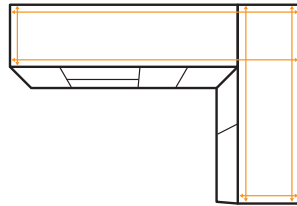
When you feel ready to order your custom-made worktop, please contact an IKEA co-worker in the kitchen department at your local store.

Measuring your worktop

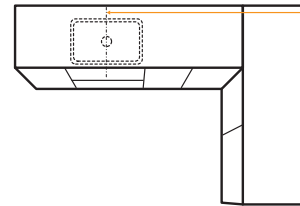
It is important to get the measurements for your worktop right, especially if you plan to order a custom-made one.



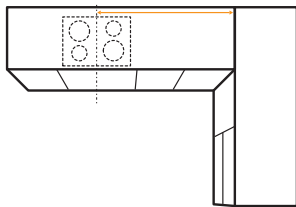
01 Have proper tools handy. Carpenters rule/tape measure, pencil and angle square.



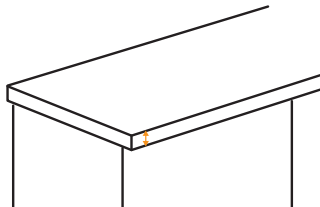
02 Measure your worktop starting from one corner to the opposite end. Secure that all length and depth measurements are taken from at least two places. Don't forget to add 30 mm to the length of cover panel and overhang.



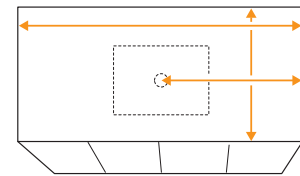
03 Measure from the corner of the worktop to the centre of the base cabinet where your sink is located.



04 Then measure from the corner to the centre of your hob. Notice where the joints are and keep this in mind.



05 Measure the thickness of your worktop.



06 If you have a kitchen island, don't forget to take measurements of your existing worktop, including the centre of cut-outs.

We will do it for you

Do you want a customised worktop, but feel uncertain about the measurements? No need. We will come to your home to measure and give you a quote.

When your new worktop is ready, we deliver and install it for you. We also take all the packaging with us for recycling.



Measuring



Delivery



Installation

Read more about our services on [page 04](#) or at [IKEA.co.uk](#)

Wall panels

Walls to match your style!

Adding wall panels is a quick and easy way to update your kitchen with new colors and texture. Our durable and easy-to-clean wall panels protect your walls from splashes and stains when you are cooking. They give you a neat finish where your worktop meets the wall and add a subtle accent of color to your

kitchen walls creating a stylish look. You can choose wall panels in various colors, materials and expressions, some are even double-sided! But if you want to go very personal, you can have your own customized one.

How to choose your wall panel:

01

What's your budget? A stylish look does not have to cost a fortune, our wall panels are available in a wide range of materials and expressions, pre-cut as well as custom-made to perfectly fit your style, needs and wallet.

02

What kind of material and expression do you prefer? The material of the wall panel you choose is just as important as the colour. Your wall panel is always going to be right up against your worktop, make sure the two materials and colours work well together.

03

Your wall panel has to end up somewhere! Where it ends is up to you – along the length of the wall, up to the bottom of your wall cabinets, up to the ceiling in areas where there are no cabinets (over the sink or over the hob).

25

All custom-made wall panels have a 25-year guarantee. Find out more on page 149.



Materials

Laminate

Laminate wall panels offer a wide variety of colors, patterns and textures needed to personalize your kitchen space. They are resistant to water splashes, stains and grease, which makes them a durable and low maintenance choice.

Laminate Thickness 1.3 cm.

Our laminate wall panels are resistant to water splash-
es, stains and grease, which makes them a durable and
low maintenance choice. They can be used across the
kitchen area, except for behind gas hobs. For perfect

colour and pattern match, our laminate wall panels
are made from the same high-quality material as our
laminate worktops.



SIBBARP custom-made wall panel, white laminate.

*Custom-made:**



SIBBARP custom-made wall panel, white high-gloss laminate.

*Custom-made:**



SIBBARP custom-made wall panel, white marble effect/laminate.

*Custom-made:**



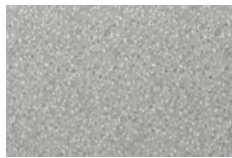
SIBBARP custom-made wall panel, white lively marble effect/laminate.

*Custom-made:**



SIBBARP custom-made wall panel, light grey concrete effect/laminate.

*Custom-made:**



SIBBARP custom-made wall panel, light grey/mineral effect laminate.

*Custom-made:**



SIBBARP custom-made wall panel, light grey laminate.

*Custom-made:**



SIBBARP custom-made wall panel, light grey stone effect laminate.

*Custom-made:**



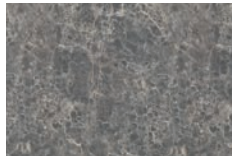
SIBBARP custom-made wall panel, stainless steel effect laminate.

*Custom-made:**



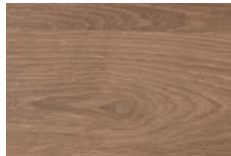
SIBBARP custom-made wall panel, aluminium effect laminate.

*Custom-made:**



SIBBARP custom-made wall panel, dark grey/marble effect laminate.

*Custom-made:**



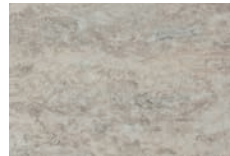
SIBBARP custom-made wall panel, beige stone effect/laminate.

*Custom-made:**



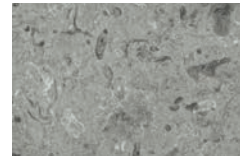
SIBBARP custom-made wall panel, ash effect laminate.

*Custom-made:**



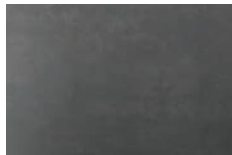
SIBBARP custom-made wall panel, oak effect/laminate.

*Custom-made:**



SIBBARP custom-made wall panel, limestone effect/laminate.

*Custom-made:**



SIBBARP custom-made wall panel, concrete effect laminate.

*Custom-made:**



SIBBARP custom-made wall panel, dark grey linen effect laminate.

*Custom-made:**



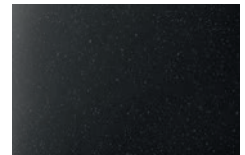
SIBBARP custom-made wall panel, black stone effect/laminate.

*Custom-made:**



SIBBARP custom-made wall panel, black marble effect/laminate.

*Custom-made:**



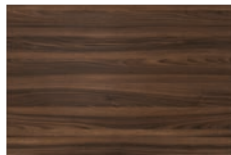
SIBBARP custom-made wall panel, black mineral effect/laminate.

*Custom-made:**



SIBBARP custom-made wall panel, matt anthracite

*Custom-made:**



SIBBARP custom-made wall panel, brown walnut effect.

*Custom-made:**



SIBBARP custom-made wall panel, white/light grey stone effect/laminate.

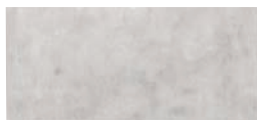
*Custom-made:**



Take home today wall panels

Our LYSEKIL wall panels are available to take home today and easy to install. You simply cut them to the right size and put them up on the wall. Follow the included

assembly instructions and it can't go wrong. Combine LYSEKIL wall panels with matching worktops for a perfectly coordinated look.



LYSEKIL wall panel, double sided, white/light grey concrete effect.

L119.6×55 cm 803.963.99



LYSEKIL wall panel, double sided copper effect/stainless steel.

L119.6×55 cm 304.829.74



LYSEKIL wall panel, double sided white marble effect/terrazzo effect.

L119.6×55 cm 105.580.07



LYSEKIL rail for wall panel, aluminum.

L120×55.4 cm 803.351.17



Sinks

A busy place in the kitchen

The sink and the area around it, is one of the busiest places in the kitchen. You use it for everything from preparing food and rinsing vegetables, to storing dirty dishes and washing up. To make

the activities as easy as possible, choose a sink and sink accessories that match your needs and the way you work in the kitchen.

How to choose your sink

01

How much space have you allocated for the sink? Our sink cabinets are 40, 60 or 80 cm wide.

02

Think about how you prepare food, but also how you wash up. Do you have a dishwasher or do you wash the dishes by hand? Do you need one bowl, two bowls or a sink with drainboard?

03

Complete your sink with sink accessories that help you organise the area in and around the sink, both when you prepare food and when you wash up (**see page 118**).

Plumbing

Let a professional connect the water to the sink and kitchen mixer tap you've bought from us. Then you know that everything from the U-pipe to water-trap and silicone seals are where they should be – and that costly water leaks will be avoided.

Read more about our services on page 04.

25

We test our sinks to ensure they can withstand the demand of everyday life in the kitchen. That's why all our sinks come with a free 25-year guarantee (except FYNDIG). Find out more on page 149.



Our range of sinks

Single bowl sinks

If space is an issue, one single bowl is a good option. Plus, in a big single bowl you can easily wash large pots and pans. Combine with sink accessories to make the bowl as functional as possible (see page 113).

Double bowl sinks

Having two bowls is ideal if you have a lot going on at the same time. For example, if one of the bowls is piling up with dirty dishes, you can still rinse off vegetables and alike in the other.

1½ bowl sinks

A one and a half bowl sink gives you the same advantages as a double bowl sink, but in a smaller area.

Sinks with drainboard

A sink with a drainboard is ideal for drying dishes as the sloping surface make excess water flow back into the bowl. All our sinks with drainboard are reversible, so you can choose if you want the drainboard to the left or to the right.

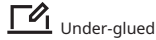
Fits 40 cm cabinets



BOHOLMEN inset sink, 1 bowl, 47×30 cm. Can be under-glued. LILLVIKEN water trap/strainer is included in the price.

Stainless steel

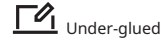
991.575.01



VRESJÖN inset sink, 1 bowl, 37×44 cm. Can be under-glued. LILLVIKEN lid and water trap/strainer is included in the price.

Stainless steel

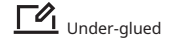
094.257.06



KILSVIKEN inset sink, 1 bowl, 36×46 cm. Can be under-glued. LILLVIKEN lid and water trap/strainer is included in the price.

Black/quartz composite

693.370.28



Fits 60 cm cabinets



HAVSEN inset sink, 1 bowl, 53×47 cm. Ceramic. LILLVIKEN water trap/strainer is included in the price.

White

392.537.13



HAVSEN sink bowl with visible front, 62×48 cm. Ceramic. LILLVIKEN water trap/strainer is included in the price.

White

192.537.14



KILSVIKEN inset sink, 1 bowl, 56×46 cm. Can be under-glued. LILLVIKEN lid and water trap/strainer is included in the price.

Black quartz composite

593.370.24



KILSVIKEN inset sink, 1 bowl, 56×46 cm. Can be under-glued. LILLVIKEN lid and water trap/strainer is included in the price.

Grey/beige quartz composite

093.370.26



KILSVIKEN inset sink, 1 bowl with drainboard, 72×46 cm. Reversible, so you can use it with the drainboard on the left or right. Can be under-glued. LILLVIKEN lid and water trap/strainer is included in the price.

Black/quartz composite

893.370.27



HILLESJÖN inset sink 1 bowl, 56×46 cm. Can be under-glued. LILLVIKEN water trap/strainer is included in the price.

Stainless steel

805.033.99



FYNDIG inset sink, 1 bowl, 46×40 cm. LILLVIKEN water trap/strainer is included in the price.

Stainless steel

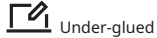
591.580.03

Fits 60 cm cabinets



VRESJÖN inset sink, 1 bowl, 54×44 cm. Can be under-glued. LILLVIKEN lid and water trap/strainer is included in the price.

Stainless steel 994.257.21



HILLESJÖN inset sink, 1½ bowl, 58×46 cm. Can be under-glued. Reversible, so you can use it with the large bowl on the left or right. LILLVIKEN lid and water trap/strainer is included in the price.

Stainless steel 491.406.31



LÅNGUDDEN inset sink, 1 bowl, 46×46 cm. Can be under-glued. LILLVIKEN water trap/strainer is included in the price.

Stainless steel 591.573.91



LÅNGUDDEN inset sink, 1 bowl, 56×53 cm. Can be under-glued. LILLVIKEN water trap/strainer is included in the price.

Stainless steel 291.574.77



AMMERÅN onset sink, 1 bowl, 60×63,5 cm. With the same depth and edge thickness, this sink fits perfectly between two separate 2.8 cm thick worktop pieces. LILLVIKEN water trap/strainer is included in the price.

Stainless steel 591.581.64



BOHOLMEN inset sink, 1 bowl, 45×15 cm. Can be under-glued. LILLVIKEN water trap/strainer is included in the price.

Stainless steel 791.574.94



VATTUDALEN inset sink, 1 bowl with drainboard, 69×47 cm. Can be under-glued. Reversible, so you can use it with the drainboard on the left or right. LILLVIKEN water trap/strainer is included in the price.

Stainless steel 691.581.68



VATTUDALEN inset sink, 1 bowl with drainboard, 86×47 cm. Can be under-glued. Reversible, so you can use it with the drainboard on the left or right. LILLVIKEN water trap/strainer is included in the price.

Stainless steel 291.581.89



VATTUDALEN inset sink, 1½ bowl with drainboard, 88×53 cm. Can be under-glued. Reversible, so you can use it with the drainboard on the left or right. LILLVIKEN water trap/strainer is included in the price.

Stainless steel 891.581.91



Fits 80 cm cabinet



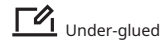
HAVSEN sink bowl with visible front, 2 bowls, 82×48 cm. LILLVIKEN water trap/strainer is included in the price.

White 792.502.65



HILLESJÖN inset sink, 1½ bowl, 75×46 cm. Can be under-glued. Reversible, so you can use it with the large bowl on the left or right. LILLVIKEN water trap/strainer is included in the price.

Stainless steel 291.711.38

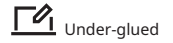


Under-glued



LÅNGUDDEN inset sink, 2 bowls, 75×53 cm. Can be under-glued. LILLVIKEN water trap/strainer is included in the price.

Stainless steel 191.574.87



Under-glued



VATTUDALEN inset sink, 2 bowls with drainboard, 110×53 cm. Can be under-glued. Reversible, so you can use it with the drainboard on the left or right. LILLVIKEN water trap/strainer is included in the price.

Stainless steel 091.581.90



Under-glued



KILSVIKEN inset sink, 1 bowl, 72×46 cm. Can be under-glued. LILLVIKEN lid and water trap/strainer is included in the price.

Black/quartz composite 293.370.25



Under-glued



VRESJÖN inset sink, 1 bowl, 73×44 cm. Can be under-glued. LILLVIKEN lid and water trap/strainer is included in the price.

Stainless steel 294.257.29



Under-glued

Water traps



LILLVIKEN water trap/strainer 1 bowl. Water trap with connection for dishwasher or washing machine. Polypropylene plastic.

103.115.39



LILLVIKEN water trap/strainer 2 bowls. Water trap with connection for both dishwasher and washing machine. Polypropylene plastic.

903.115.40



LILLVIKEN extra connection for water-trap. Allows you to connect an extra appliance to LILLVIKEN water-trap. Polypropylene plastic.

403.883.15

Sink accessories

Our sink accessories support all activities in and around the sink, helping you when preparing food and

washing up. Plus, they help you to save both water and space, too.



LILLVIKEN lid. Attaches via a magnet to all sink bowls with LILLVIKEN water-trap and can be used as a handle for lifting the basket. The lid creates a flat surface at the bottom of the sink and prevents food waste from getting into the basket, making the sink easy to keep clean.

203.178.52



NORRSJÖN chopping board, L44×W42 cm. You can place the chopping board over the sink to get more space on the worktop and to hide dirty dishes. Fits over the bowl of VRESJÖN sinks, 54×44 cm or 73×44 cm. Solid oak.

403.397.11



NORRSJÖN colander, L42×W19×H9 cm. The colander is designed to rest steadily on the edges of the bowl. You can use it as a colander to rinse vegetables and salad or drain pasta. Fits on the bowl of all VRESJÖN sinks, 37×44 cm or bigger.

003.397.13



LILLHAVET chopping board, light grey, 1-p. L49×W35 cm. You get an additional work surface when you fit the chopping board over one of our kitchen sinks with inner dimension 400 mm.

505.034.33



LILLHAVET chopping board, L48×W17 cm, light grey, 1-p. You get an additional work surface when you fit the chopping board over one of our kitchen sinks with inner dimension 400 mm.

405.128.00



LILLHAVET wash-up bowl, anthracite. W48×D24×H17.3 cm. You can save water by doing your dishes in the washing-up bowl instead of washing dishes under running water. It can be placed over the edges of the sink, with inner dimension 400 mm, to give you extra worktop space.

105.034.30



LILLHAVET multifunc dish rack, anthracite. W17.4×L47.8×H14 cm. Can be fitted over your sink, with inner dimension 400 mm, or placed together with the drain board on your worktop. The soft coating prevents rusting and will outlast many years and washes.

804.612.76



LILLHAVET colander, anthracite. W48×D18.2×H10.2 cm. This over-the-sink colander for kitchen sinks with inner dimension 400 mm, is perfect to use as a strainer for washing fruit and vegetables, as a dish drainer or simply to hold sink bowl accessories.

505.034.66



SKOLÅST sink container extendable, green. Big enough to hold everything from washing-up liquid to brushes and sponges, giving you more space to work on the kitchen counter. Fits most sink bowls since the length can be adjusted from 39 to 54 cm, including the handles. On the edge there is an extendable arm where you can hang a dishcloth to dry. Water from dish brushes and sponges drains quickly through the holes in the bottom. Hangs firmly in place over the sink bowl thanks to the anti-slip surface under the handles.

605.566.85

Under-glued sinks

Under-glued sinks give you an uninterrupted, smooth look. They make cleaning your worktop easy, as there are no obstructions for food scraps to catch on. You can order an

under-glued sink when you order a custom-made worktop. They are fitted in the factory, leaving the work up to us.

Under-glued in quartz worktop



Under-glued in laminate worktop



Under-glued in thick veneer worktop



Products used

VRESJÖN inset sink, 1 bowl,
54×44 cm, stainless steel.

 Under-glued



Plan your under-glued sink

Use our simple online calculator to design a custom-made worktop with an under-glued sink for your kitchen. You get an instant estimate of what everything will cost, too. You can choose different worktop, wall panel and sink materials, sizes and styles to create a custom-made worktop that's perfect for you. The custom-made worktop calculator makes it super easy to try out different options and compare their prices.

Check it out at [IKEA.co.uk](https://www.ikea.co.uk)

Kitchen taps

Saving water at every step

Earth may be covered in a lot of water, but very little of it is drinkable and even less is accessible. No organism can survive without it, and no new water is created. It's constantly recycled, but our freshwater supply is overused; not evenly distributed; and impacted by pollution, contamination and climate change. That's why we equip all our

kitchen mixer taps with a water saving aerator that reduces water use – while maintaining the same water stream. We didn't invent aerators, but think they are an important example of how we can work together to save water for everyone's benefit.



Plumbing

Let a professional connect the water to the sink and kitchen mixer tap you've bought from us. Then you know that everything from the U-pipe to water-trap and silicone seals are where they should be – and that costly water leaks will be avoided. Read more about our services on page 04.

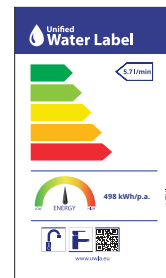
10

All our kitchen mixer taps are tested and third party certified to meet, or exceed, the demands of the relevant national and international mechanical, quality, safety and hygienic standards. All IKEA kitchen mixer taps come with a free 10-year guarantee. Find out more on page 149

Did you know that heating hot water accounts for a large proportion of home energy use? Using water more efficiently can reduce your energy bills and ultimately help reduce carbon emissions.

Look for the Unified Water Label and start making a difference. The label has a clear colour coded system to show how much energy and water the product uses. Green rated products use less than those rated red.

Visit www.uwla.eu to find out more.





Functions



Kitchen mixer taps with low spout

Kitchen mixer taps with low spouts always have the handle on top, and are ideal for small single bowl sinks.

LAGAN kitchen mixer tap*



Kitchen mixer taps with high spout

The high spout makes it easier to wash dishes, including large pots.

DELSJÖN kitchen mixer tap*



Kitchen mixer taps with pull-out spout

Rinsing dishes is easier with the pull-out spout. A counterweight makes the hose easily retract back into the kitchen mixer tap.

ÄLMAREN kitchen mixer tap with pull-out spout*



Kitchen mixer taps with handspray

The tap functions two ways, so you can switch between a concentrated stream and a shower function.

TOLLSJÖN kitchen mixer tap/handspray *



Kitchen mixer taps with sensor

The kitchen mixer tap's sensor function is simple, hygienic and practical – perfect when you just want to fill a glass with water or rinse off your hands when cooking.

INSJÖN kitchen mixer tap with sensor*



Kitchen mixer taps with foldable function

The tap conveniently folds down so that it doesn't get in the way of inward-opening kitchen windows.

JUTTERN kitchen mixer tap foldable*

Kitchen mixer taps



8.0 l/min*

LAGAN kitchen mixer tap H16 cm.
Swivel spout: 360°.

Chrome-plated 900.850.28



8.0 l/min*

BOSJÖN kitchen mixer tap H32 cm.
Swivel spout: 120°.

Stainless steel colour 604.573.98
Brushed black metal 804.584.53



8.0 l/min*

EDSVIK dual-control kitchen mixer tap H30 cm.
Swivel spout: 360°.

Chrome-plated 800.318.42



5.7 l/min*

GLYPEN mixer tap H26 cm. Swivel spout is preset to 360° but can be changed to 90° or 120°.

Stainless steel colour 304.423.89



8.0 l/min*

GLITTRAN kitchen mixer tap H28 cm.
Swivel spout: 360°.

Chrome-plated 702.226.20
Black 505.199.38
Brass-colour 204.686.81

Kitchen mixer taps with pull-out spout



8.0 l/min*

ÄLMAREN kitchen mixer tap with pull-out spout
H36 cm. Swivel spout 120°. Also available without pull-out spout.

Stainless steel
colour

204.280.58



8.0 l/min*

INSJÖN kitchen mixer tap with pull-out spout
H43 cm. Swivel spout: 120°. Also available without pull-out spout, or with sensor function.

Chrome-plated

404.280.57

Kitchen mixer tap taps with high spout



8.0 l/min*

ÄLMAREN kitchen mixer tap H36 cm. Swivel spout is preset to 360° but can be changed to 120°. Also available with pull-out spout.

Stainless steel colour 604.551.63
Chrome-plated 204.551.60



8.0 l/min*

GAMLESJÖN dual-control kitchen mixer tap
H36 cm. Swivel spout 360°.

Brushed black metal 303.416.77



8.0 l/min*

INSJÖN kitchen mixer tap H40 cm. Swivel spout is preset to 360° but can be changed to 120°. Also available with pull-out spout or sensor function.

Chrome-plated 603.701.21



8.0 l/min*

DELSJÖN kitchen mixer tap H36 cm, Swivel spout is preset to 360° but can be changed to 120°.

Pewter effect 304.887.87
Brass colour 404.780.47
Brushed black metal 404.888.00

Kitchen mixer taps with handspray



8.0 l/min*

VIMMERN kitchen mixer tap with handspray
H47 cm. Swivel spout: 360°.

Stainless steel colour 805.199.46



9.5 l/min*

TOLLSJÖN kitchen mixer tap with handspray
H46 cm. Swivel spout is preset to 360° but can be changed to 120°.

Black polished metal 803.416.89
Chrome-plated 903.416.98

Kitchen mixer taps with sensor



INSJÖN kitchen mixer tap with sensor, H40 cm.
Swivel spout is preset to 360° but can be changed to 120°. Also available without sensor function or with pull-out spout.
Chrome-plated 603.419.06

Kitchen organisers

A kitchen easy to live in

Your kitchen isn't fully in function until everything in it has found a place of its own. With smart organisers and acces-

sories, you'll find what you need, when you need it.

Your best kitchen friends

Trays, boxes and waste organisers help you to make the most of the space inside your kitchen cabinets.

flow both when preparing food and washing up.

The sink area is a busy place. We have accessories with multiple purposes that can help you utilise the area in and around the sink, supporting the work-

Utilise the full area in the kitchen, even the walls. With smart wall storage often used items can be close at hand, at the same time you free up workspace.



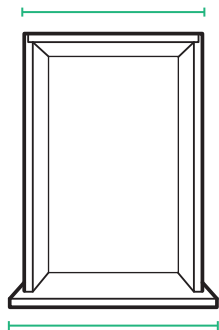
Create the perfect combination for your drawers

Less time searching, more time for cooking. Clever inside trays for your drawers keep cutlery and kitchen utensils organised and in place. To really make sure you

can see everything in the drawer, complete with kitchen lighting. See all kitchen lighting on **page 85**.

40 cm drawer

Inner dimensions 32 cm



Outer dimensions 40 cm



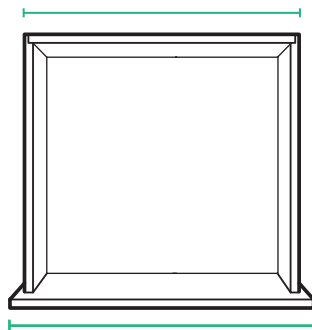
05 1× UPPDATERA Cutlery tray, 32×50 cm



07 1× UPPDATERA Cutlery tray, 32×50 cm

60 cm drawer

Inner dimensions 52 cm



Outer dimensions 60 cm



05 1× UPPDATERA Cutlery tray, 32×50 cm
02 1× UPPDATERA Utensil tray, 20×50 cm



05 1× UPPDATERA Cutlery tray, 32×50 cm
02 1× UPPDATERA Utensil tray, 20×50 cm
09 1× UPPDATERA Spice rack



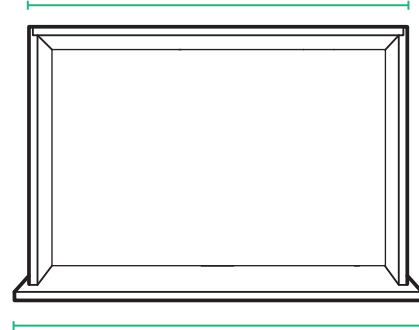
08 1× UPPDATERA Cutlery tray, 52×50 cm



07 1× UPPDATERA Cutlery tray, 32×50 cm
04 1× UPPDATERA Utensil tray, 20×50 cm
10 1× UPPDATERA Knife rack

80 cm drawer

Inner dimensions 72 cm



Outer dimensions 80 cm



05 1× UPPDATERA Cutlery tray, 32×50 cm
02 2× UPPDATERA Utensil tray, 20×50 cm



05 1× UPPDATERA Cutlery tray, 32×50 cm
02 2× UPPDATERA Utensil tray, 20×50 cm
09 1× UPPDATERA Spice rack
10 1× UPPDATERA Knife rack



08 1× UPPDATERA Cutlery tray, 52×50 cm
04 1× UPPDATERA Utensil tray, 20×50 cm



08 1× UPPDATERA Cutlery tray, 52×50 cm
04 1× UPPDATERA Utensil tray, 20×50 cm
10 1× UPPDATERA Knife rack

UPPDATERA interior fittings

Choose interior fittings that suit your size of drawer and your cutlery and utensils. A helpful tip is to keep

things close to where they are used as this enables a smooth workflow.

Utensil trays

01



UPPDATERA Utensil tray, 20×31 cm.
White 104.600.15

02



UPPDATERA Utensil tray, 20×50 cm.
White 504.600.18

03



UPPDATERA utensil tray, 10×50 cm.
Light bamboo 004.883.26

04



UPPDATERA Utensil tray, 20×50 cm.
Light bamboo 704.599.76

Cutlery trays

05



UPPDATERA Cutlery tray, 32×50 cm.
White 104.600.20

06



UPPDATERA Cutlery tray, 32×31 cm.
White 704.600.17

07



UPPDATERA Cutlery tray, 32×50 cm.
Light bamboo 404.599.73

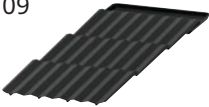
08



UPPDATERA Cutlery tray, 52×50 cm.
Light bamboo 704.331.04

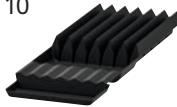
Spice and knife rack inserts

09



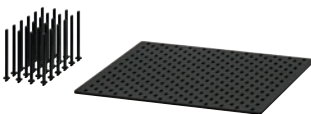
UPPDATERA Spice rack.
Anthracite 304.599.78

10



UPPDATERA Knife rack.
Anthracite 804.332.07

Other organisers



UPPDATERA Pegboard drawer organiser.
Anthracite.
60 cm 604.600.08
80 cm 004.600.11



UPPDATERA adjustable organiser for drawer.
40 cm 505.441.79
60 cm 505.441.84



UPPDATERA sliding organiser for drawer.
60 cm 005.441.86

Waste sorting combinations

Are you curious about how your waste can become new resources? HÅLLBAR series helps you sort different materials into different bins – a simple action and the first step towards giving waste a new life. HÅLLBAR

waste sorting management serie is a waste management solution for any room of your home and can be built-in and freestanding, whichever you prefer.



The bin's ventilation holes and the form of the bottom allow the air to circulate and dry out the organic waste. This minimises unwanted odours.



A ring on the top edge of the bin hides the waste bag and keeps it in place. It's removable either for easy cleaning or if not being used



The folding handle makes it easy to carry the bin with you to the waste station.



The included sticker can be attached to the bin to mark what you are sorting. Draw or write on the sticker to make it clear what goes in the bin.

MAXIMERA high drawer, 60 cm wide, 45 cm deep

HÅLLBAR bin with lids are designed to meet different waste sorting needs. This narrow combination is suitable if you have limited space and choose to sort your waste at the recycling station.



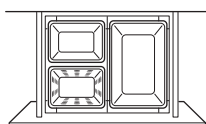
HÅLLBAR waste sorting solution 42L for METOD kitchen drawer, ventilated/light grey. A combination with 1 bin for sorting your cans and smaller packages, 1 for cartons, plastic, bottles, jars and advertising mail, and 1 for dry and wet organic waste.
(293.088.29)



HÅLLBAR waste sorting solution 44 l for METOD kitchen drawer/light grey. A combination with 2 bins for sorting your cartons, plastic, paper, bottles, glass, jars, envelopes and advertising mail.
(193.088.39)

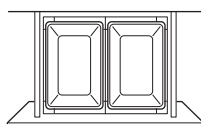


HÅLLBAR waste sorting solution 40L for METOD kitchen drawer, ventilated/light grey. A combination with 3 bins for sorting your cans and smaller packages such as hygiene products, and 1 for sorting dry and wet organic waste.
(393.089.23)



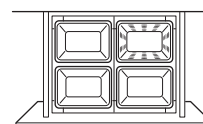
Parts included in this solution

| | | |
|--|------------|------|
| HÅLLBAR bin with lid, 10L, light grey | 803.980.58 | 1 pc |
| HÅLLBAR bin with lid, 22L, light grey | 204.202.03 | 1 pc |
| HÅLLBAR bin with lid for organic waste, 10L, light grey | 804.338.82 | 1 pc |
| HÅLLBAR support frame for waste sorting bins, 60 cm, white | 804.228.69 | 1 pc |



Parts included in this solution

| | | |
|--|------------|-------|
| HÅLLBAR bin with lid, 22L, light grey | 204.202.03 | 2 pcs |
| HÅLLBAR support frame for waste sorting bins, 60 cm, white | 804.228.69 | 1 pc |



Parts included in this solution

| | | |
|--|------------|-------|
| HÅLLBAR bin with lid, 10L, light grey | 803.980.58 | 3 pcs |
| HÅLLBAR bin with lid for organic waste, 10L, light grey | 804.338.82 | 1 pc |
| HÅLLBAR support frame for waste sorting bins, 60 cm, white | 804.228.69 | 1 pc |

MAXIMERA high drawer 80 cm wide, 45 cm deep

HÅLLBAR bin with lids are designed to meet different waste sorting needs. This combination is suitable if you want to make it easy to sort your waste at home.



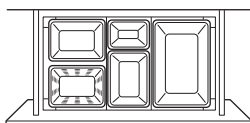
HÅLLBAR waste sorting solution 55L for METOD kitchen drawer ventilated/light grey. A combination with 4 bins for sorting everything from cartons, bottles and cans to smaller packages, lightbulbs and batteries, and 1 for sorting dry and wet organic waste.
(693.089.26)



HÅLLBAR waste sorting solution 57L for METOD kitchen drawer/light grey. A combination with 4 bins for sorting everything from cartons, bottles, cans and smaller packages to lightbulbs and batteries.
(993.096.94)

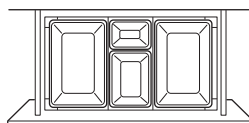


HÅLLBAR waste sorting solution 53L for METOD kitchen drawer ventilated/light grey. A combination with 5 bins for sorting everything from cans and smaller packages to lightbulbs and batteries, and 1 for sorting dry and wet organic waste.
(093.096.98)



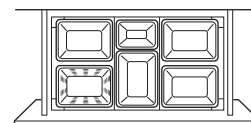
Parts included in this solution

| | | |
|--|------------|-------|
| HÅLLBAR bin with lid with lid, 10L, light grey | 803.980.58 | 2 pcs |
| HÅLLBAR bin with lid, 22L, light grey | 204.202.03 | 1 pc |
| HÅLLBAR bin with lid, 3L, light grey | 904.321.94 | 1 pc |
| HÅLLBAR bin with lid for organic waste, 10L, light grey | 804.338.82 | 1 pc |
| HÅLLBAR support frame for waste sorting bins, 80 cm, white | 604.228.70 | 1 pc |



Parts included in this solution

| | | |
|--|------------|-------|
| HÅLLBAR bin with lid, 10L, light grey | 803.980.58 | 1 pc |
| HÅLLBAR bin with lid 22L, light grey | 204.202.03 | 2 pcs |
| HÅLLBAR bin with lid 3L, light grey | 904.321.94 | 1 pc |
| HÅLLBAR support frame for waste sorting bins, 80 cm, white | 604.228.70 | 1 pc |



Parts included in this solution

| | | |
|--|------------|-------|
| HÅLLBAR bin with lid 10L, light grey | 803.980.58 | 4 pcs |
| HÅLLBAR bin with lid 3L, light grey | 904.321.94 | 1 pc |
| HÅLLBAR bin with lid for organic waste, 10L, light grey | 804.338.82 | 1 pc |
| HÅLLBAR support frame for waste sorting bins, 80 cm, white | 604.228.70 | 1 pc |

Waste sorting combinations

HÅLLBAR pull-out solutions

HÅLLBAR bin with lids are designed to meet different waste sorting needs. This narrow combination is suitable if you have limited space and choose to sort your waste at the recycling station.



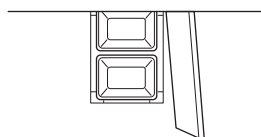
HÅLLBAR waste sorting solution 20L with pull-out/light grey. A combination with 2 bins that is perfect for sorting your tin cans and smaller packages. (793.088.03)



HÅLLBAR waste sorting solution 20L with pull-out ventilated/light grey. A combination with 1 bin for sorting your tin cans and smaller packages and 1 for dry and wet organic waste. (993.088.16)

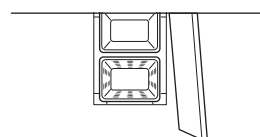


HÅLLBAR waste sorting solution 22L with pull-out/light grey. HÅLLBAR bin with lids are designed to meet different waste sorting needs. This bin is perfect for sorting things like cardboard, plastic, paper, bottles, glass, tin cans, envelopes and advertising mail. (093.088.25)



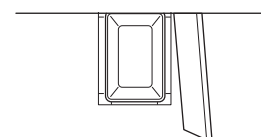
Parts included in this solution

| | | |
|---|------------|-------|
| HÅLLBAR bin with lid, 10L, light grey | 803.980.58 | 2 pcs |
| HÅLLBAR pull-out frame for waste sorting, light grey | 204.228.53 | 1 pc |



Parts included in this solution

| | | |
|---|------------|------|
| HÅLLBAR bin with lid for organic waste 10L, light grey | 804.338.82 | 1 pc |
| HÅLLBAR bin with lid 10L, light grey | 803.980.58 | 1 pc |
| HÅLLBAR pull-out frame waste sorting light grey | 204.228.53 | 1 pc |



Parts included in this solution

| | | |
|---|------------|------|
| HÅLLBAR bin with lid 22L, light grey | 204.202.03 | 1 pc |
| HÅLLBAR pull-out frame waste sorting, light grey | 204.228.53 | 1 pc |



HÅLLBAR bin with lids are stackable to save space. Place same-size bins on top of each other or place smaller bins on top of the larger ones.



Mount this pull-out frame inside your cabinet to hide your waste sorting behind a door. Easy to mount and use in cabinets throughout the home. Pull-out to sort and push it back when you are done.

HÅLLBAR Freestanding waste sorting solutions

The bins can be placed freestanding anywhere in your home or integrated in a cabinet or drawer.

HÅLLBAR bin with lids are stackable to save space. Place same-size bins on top of each other or place smaller bins on top of the larger ones.

A lid is included to hide your waste. It's removable for easy cleaning or if you prefer to keep your bin open.



HÅLLBAR bin with lid, 3L, light grey. This bin is perfect for sorting used batteries and light bulbs, or to store smaller items like sponges, cloths, tea lights and crayons.

904.321.94



HÅLLBAR bin with lid, 10L, light grey. This bin is perfect for sorting tin cans, small packages such as hygiene products or to store paper rolls or shopping bags.

803.980.58



HÅLLBAR bin with lid for organic waste, 10L, light grey. This bin is perfect for sorting dry and wet organic waste such as coffee grounds and peels from fruits or vegetables. The bin's ventilation holes and the form of the bottom allow the air to circulate and dry out the organic waste. This minimises unwanted odours.

804.338.82



HÅLLBAR bin with lid, 22L, light grey. This bin is perfect for sorting things like cardboard, plastic, paper, bottles, glass, tin cans, envelopes and advertising mail.

204.202.03



HÅLLBAR bin with lid, 35L, light grey. This bin is perfect for sorting things like cartons, bottles and newspapers or to give bulkier items their own space.

504.202.06



HÅLLBAR pull-out frame for waste sorting, light grey. Mount this pull-out frame inside your cabinet to hide your waste sorting behind a door. Easy to mount and use in cabinets throughout the home. The pull-out frame gives you quick access and a good overview of your waste sorting and keeps your bin stable. Pull it out to sort and push it back when you are done.

204.228.53



HÅLLBAR support frame for waste sorting bins, W60 cm, white. By mounting HÅLLBAR support frame for waste sorting bins in MAXIMERA high drawer you can hide your waste sorting. The support frame provides quick access and a good overview of your waste sorting and keeps your bins stable. Pull it out to sort and push it in when you are done.

Mount in MAXIMERA high drawer 60x60 cm or in MAXIMERA high drawer 60x45 cm to allow space for pipes behind the drawer. Dimensioned for HÅLLBAR bin with lids, excluding 3 l and 35L bins.

804.228.69



HÅLLBAR support frame for waste sorting bins, W80 cm, white. By mounting HÅLLBAR support frame for waste sorting bins in MAXIMERA high drawer you can hide your waste sorting. The support frame provides quick access and a good overview of your waste sorting and keeps your bins stable. Pull it out to sort and push it in when you are done.

Mount in MAXIMERA high drawer 80x60 cm or in MAXIMERA high drawer 80x45 cm to allow space for pipes behind the drawer. Dimensioned for HÅLLBAR bin with lids, excluding the 35L bin.

604.228.70

Other freestanding waste sorting products



SORTERA waste sorting bin/lid, white.

37L, white

102.558.97

60L

702.558.99



MJÖSA pedal bin, dark grey.

12L

104.228.44

30L

004.228.54



KNÖCKLA pedal bin, dark grey.

50L

705.141.00



KNODD bin/lid, grey.

16L

603.122.49

40L

903.153.12



DAMMÄNG bin with lid.

8L, dark grey

005.599.84

26L, grey-beige

605.599.76

48L, grey-green

005.599.79



New

FARMARKVAST bin with lid for organic waste, grey-green. Keep the bin next to you on the kitchen worktop when you're cooking. No bag is needed.

4L

905.670.03

Knobs and handles

Small details that makes a difference!

Knobs and handles are like icing on the cake. Enhance the style you like, refresh the look of doors and drawers, co-ordinate with the rest of your home – or simply change because it's fun.

Knobs and handles may seem small but they can help you to really personalise your kitchen. You can enhance a style to make your kitchen look more traditional or more modern. Mix them or match them perfectly and play with placements to create the finishing touches to the look you want in your dream kitchen.



FIXA drill template

This simple tool helps you easily and accurately mark where you want to place your knobs and handles. Available online and at your local IKEA store.



Knobs and handles



BILLSBRO handle, stainless steel colour.

L40 mm 603.235.92 2-pack

L120 mm 703.236.00 2-pack

L320 mm 503.235.97 2-pack

L520 mm 403.235.93 2-pack

L720 mm 703.235.96 2-pack



BILLSBRO handle, white.

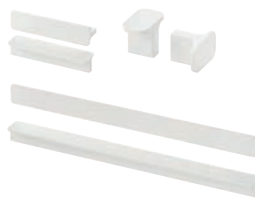
L40 mm 203.343.14 2-pack

L120 mm 503.343.03 2-pack

L320 mm 603.343.12 2-pack

L520 mm 503.343.17 2-pack

L720 mm 103.343.19 2-pack



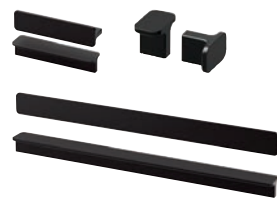
HACKÁS handle, white.

L100 mm 304.086.82 2-pack

L300 mm 104.086.83 2-pack

HACKÁS knob, white.

Ø15 mm 604.086.85 2-pack



HACKÁS handle, anthracite.

L100 mm 303.424.79 2-pack

L300 mm 503.424.78 2-pack

HACKÁS knob, anthracite.

Ø15 mm 803.397.90 2-pack



BAGGANÄS handle, black.

L143 mm 803.384.13 2-pack

L335 mm 603.384.14 2-pack



BAGGANÄS handle, brass-colour.

L143 mm 003.384.07 2-pack

L335 mm 203.384.11 2-pack



BAGGANÄS handle, stainless steel.

L143 mm 703.384.18 2-pack

L335 mm 503.384.19 2-pack



BAGGANÄS knob, black.

Ø13 mm 303.384.15 2-pack

Ø20 mm 103.384.16 2-pack

Ø21 mm 903.384.17 2-pack



BAGGANÄS knob, brass-colour.

Ø13 mm 603.384.09 2-pack

Ø20 mm 803.384.08 2-pack

Ø21 mm 003.384.12 2-pack



BAGGANÄS knob, stainless steel.

Ø13 mm 303.384.20 2-pack

Ø20 mm 103.384.21 2-pack

Ø21 mm 903.384.22 2-pack



KALERUM handle, stainless steel colour.

138 mm 605.536.44 2-pack

266 mm 305.536.50 2-pack

394 mm 405.536.59 2-pack



GUBBARP handle, white.

L116 mm 003.364.32 2-pack

GUBBARP knob, white.

Ø21 mm 803.364.33 2-pack



DRAGMARK clip-on handle, white.

40 mm 005.598.04 2-pack



KALLRÖR handle, stainless steel.

L213 mm 503.570.02 2-pack

L405 mm 103.570.04 2-pack

L597 mm 303.570.03 2-pack



SÖRBYN handle, stainless steel.

96 mm 904.503.38 2-pack

SÖRBYN knob, stainless steel.

Ø25 mm 504.503.40 2-pack

**NYDALA handle**, black.

| | | |
|---------|------------|--------|
| L154 mm | 004.496.36 | 2-pack |
| L346 mm | 404.496.39 | 2-pack |

**NYDALA handle**, bronze-colour.

| | | |
|---------|------------|--------|
| L154 mm | 204.057.59 | 2-pack |
| L346 mm | 604.057.57 | 2-pack |

**ÖSTERNÄS handle**, tanned leather.

| | | |
|---------|------------|--------|
| L153 mm | 403.488.95 | 2-pack |
| L65 mm | 203.488.96 | 2-pack |

**VINNÄSET knob**.

| | | |
|--------|------------|--------|
| Ø37 mm | 504.342.94 | 2-pack |
|--------|------------|--------|

**NYDALA knob**, black.

| | | |
|--------|------------|--------|
| Ø16 mm | 804.496.42 | 2-pack |
|--------|------------|--------|

**NYDALA knob**, bronze-colour.

| | | |
|--------|------------|--------|
| Ø16 mm | 404.057.58 | 2-pack |
|--------|------------|--------|

**SKRUVSHULT handle**.
Anthracite.

| | | |
|--------|------------|--------|
| 152 mm | 505.059.55 | 2-pack |
|--------|------------|--------|

**SKRUVSHULT knob**.
Anthracite.

| | | |
|-------|------------|--------|
| 18 mm | 805.074.82 | 2-pack |
| 26 mm | 705.074.87 | 2-pack |

**BORGHAMN handle**, steel.

| | | |
|---------|------------|--------|
| L40 mm | 003.160.47 | 2-pack |
| L170 mm | 203.160.46 | 2-pack |
| L426 mm | 403.189.78 | 2-pack |

**KLINGSTORP handle**, black/chrome-plated.

| | | |
|--------|------------|--------|
| 141 mm | 405.652.85 | 2-pack |
|--------|------------|--------|

KLINGSTORP knob, black/chrome-plated.

| | | |
|-------|------------|--------|
| 23 mm | 305.652.81 | 2-pack |
| 30 mm | 905.652.83 | 2-pack |

**KLINGSTORP handle**, off-white/
chrome-plated.

| | | |
|--------|------------|--------|
| 141 mm | 905.536.85 | 2-pack |
|--------|------------|--------|

KLINGSTORP knob, off-white/chrome-plated.

| | | |
|-------|------------|--------|
| 23 mm | 605.428.58 | 2-pack |
| 30 mm | 605.536.82 | 2-pack |

**MOSSARYD drop handle**.
Black

| | | |
|--------|------------|--------|
| L49 mm | 503.703.53 | 2-pack |
|--------|------------|--------|

Stainless steel colour

| | | |
|--------|------------|--------|
| L49 mm | 703.703.52 | 2-pack |
|--------|------------|--------|

**TÄRNESTAD knob**.
Oak

| | | |
|--------|------------|--------|
| Ø17 mm | 205.428.60 | 2-pack |
|--------|------------|--------|

**ENERYDA knob**, black.

| | | |
|--------|------------|--------|
| Ø20 mm | 303.475.04 | 2-pack |
| Ø27 mm | 803.475.06 | 2-pack |
| Ø35 mm | 003.475.05 | 2-pack |

**ENERYDA knob**, brass-colour.

| | | |
|--------|------------|--------|
| Ø20 mm | 203.475.09 | 2-pack |
| Ø27 mm | 403.475.08 | 2-pack |
| Ø35 mm | 603.475.07 | 2-pack |

**ENERYDA knob**, chrome-plated.

| | | |
|--------|------------|--------|
| Ø20 mm | 503.475.03 | 2-pack |
| Ø27 mm | 003.475.10 | 2-pack |
| Ø35 mm | 803.475.11 | 2-pack |

**ENERYDA cup handle**, black.

| | | |
|--------|------------|--------|
| L89 mm | 503.475.17 | 2-pack |
|--------|------------|--------|

**ENERYDA cup handle**, brass-colour.

| | | |
|--------|------------|--------|
| L89 mm | 903.475.15 | 2-pack |
|--------|------------|--------|

**ENERYDA cup handle**, chrome-plated.

| | | |
|--------|------------|--------|
| L89 mm | 403.475.13 | 2-pack |
|--------|------------|--------|

**ENERYDA handle**, black.

| | | |
|---------|------------|--------|
| L112 mm | 703.475.16 | 2-pack |
|---------|------------|--------|

**ENERYDA handle**, brass-colour.

| | | |
|---------|------------|--------|
| L112 mm | 203.475.14 | 2-pack |
|---------|------------|--------|

**ENERYDA handle**, chrome-plated.

| | | |
|---------|------------|--------|
| L112 mm | 603.475.12 | 2-pack |
|---------|------------|--------|

Kitchen accessories

Whether you have a new, beautifully-planned kitchen or just looking to make improvements in your current one - there are a few secret ingredients that will make life simpler and more enjoyable. For instance, smart organisers create natural spots for storing cooking utensils and gadgets, so the whole family knows where to find them - and where to put them back. Trays, boxes and waste organisers work double

shift by preventing clutter and making the best use of space inside your cabinets and drawers. Wall storage does its magic by putting all those things you use the most, close at hand - right where you need them. And for the busiest place in the kitchen - don't forget the clever accessories around the sink that come in handy when preparing food and washing up.



Kitchen islands, sideboards, trolleys and step stools

All of these are easy additions to any kitchen design. A kitchen island serves as an extended worktop space and often becomes a favourite spot for snacking, working and socialising. Sideboards add that little extra storage we all need and a trolley on wheels offers roll-anywhere convenience. A step-stool is a must-have for any kitchen, for reaching things up high, letting kids join the fun at the worktop, or using as extra seating by the table.



Having things in plain sight has its advantages

With open shelves, hooks, rails and racks you can create a personal combination that gives a good overview of your kitchen and makes everything easily accessible. Inspired by restaurant kitchens, we created KUNGSFORS series of wall-mounted shelves and accessories so you can feel like a professional and enjoy a smooth workflow.



Wall storage



KUNGSFORS suspension rail*, L80 cm.
Stainless steel 803.348.58



KUNGSFORS wall grid*, W56×H26.5 cm.
Stainless steel 803.349.19



KUNGSFORS dish drainer*, W60×D30×H10 cm.
Powder coated steel/
stainless steel 403.712.25



KUNGSFORS suspension rail with shelf/wall grid*, W184×D32×H160 cm.
Stainless steel/
ash veneer 292.543.41



**KUNGSFORS suspension rail/shelf/dish drainer/
rail/wall grid***, W184×D32×H80 cm.
Ash veneer/stainless steel/powder
coated steel 892.543.38



**KUNGSFORS suspension rail with shelf/rail/wall
grid/ash veneer shelf***, W184×D32×H80 cm.
Stainless steel/
ash veneer 592.848.79



**KUNGSFORS suspension rail/shelf/dish drainer/
wall grid***, W124×D32×H102 cm.
Ash veneer/stainless steel/powder
coated steel 492.543.35



**KUNGSFORS suspension rail with shelf/mag-
net knife rack/wall grid/ash veneer shelf***,
W124×D32×H120 cm.
Stainless steel/
ash veneer 392.848.80



**KUNGSFORS suspension rail with shelf/rack/dish
drainer***, W64×D32×H80 cm.
Ash veneer/stainless steel/ powder
coated steel 092.543.23



**KUNGSFORS suspension rail with shelf/magnet
knife rack***, W64×D32×H80 cm.
Ash veneer/
stainless steel 392.543.26



KUNGSFORS suspension rail with shelf/wall grid*,
W64×D32×H80 cm.
Stainless steel 192.543.32



SKÅDIS pegboard, 76×56 cm.
White 103.216.18
Black 505.343.78
Wood 103.471.71



SKÅDIS pegboard, 56×56 cm.
White 003.208.03
Black 105.343.75
Wood 903.471.72



SKÅDIS pegboard, 36×56 cm.
White 503.208.05
Black 805.343.72
Wood 703.471.73



BOTKYRKA wall shelf, 80×20 cm.
White 402.797.31



TORNVIKEN wall shelf, 60×100 cm.

| | |
|-----------|------------|
| Grey | 803.981.00 |
| Off-white | 203.980.99 |



TORNVIKEN plate shelf, 80×100 cm.

| | |
|-----------|------------|
| Grey | 003.944.22 |
| Off-white | 603.916.56 |



TORNVIKEN wall shelf, 120 cm.

| | |
|-----------|------------|
| Grey | 803.916.60 |
| Off-white | 603.916.61 |



TORNVIKEN wall shelf, 50 cm.

| | |
|-----------|------------|
| Grey | 803.592.12 |
| Off-white | 803.935.17 |

Kitchen islands and sideboards

Boost your storage space and kitchen functionality while adding a social focal point in your kitchen at the

same time. A kitchen island or sideboard is great for many things.



TORNVIKEN kitchen island, 72×52×90 cm.

| | |
|---------------|------------|
| Grey/oak | 203.916.58 |
| Off-white/oak | 003.933.71 |



TORNVIKEN kitchen island, 126×77×90 cm.

| | |
|---------------|------------|
| Grey/oak | 803.933.72 |
| Off-white/oak | 403.916.57 |



VADHOLMA kitchen island, 79×63×90 cm.

| | |
|-----------|------------|
| Black/oak | 403.661.15 |
|-----------|------------|



VADHOLMA kitchen island, 126×79×90 cm.

| | |
|-----------|------------|
| Black/oak | 203.591.54 |
|-----------|------------|



VADHOLMA kitchen island with rack, 126×79×225 cm.

| | |
|-----------|------------|
| Black/oak | 592.762.28 |
|-----------|------------|

Rails and accessories

Our selection of kitchen helpers gives you more work and storage space without the expense of a remodel.



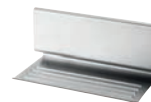
KUNGSFORS rail*, stainless steel. Can also be used as a towel rail or a pot lid rack.

| | |
|--------|------------|
| W40 cm | 004.424.99 |
| W56 cm | 403.349.16 |



KUNGSFORS s-hook*, H6 cm, stainless steel, 5-p. Use the hooks to store your kitchenware on the wall and fit more into your cabinets and drawers.

203.349.22



KUNGSFORS tablet stand*, W26×D13×H12 cm, stainless steel. Can be hung on KUNGSFORS rail to free up space on the worktop.

203.349.17



KUNGSFORS hook*, H8 cm, stainless steel, 3-p. The clean shape means that you can hang several kitchen utensils on the same hook, so you can store them more efficiently and get more worktop space.

703.796.92



KUNGSFORS magnet knife rack*, W56 cm, stainless steel. You can choose to mount it directly to the wall or with the help of KUNGSFORS suspension rail.

403.349.21



KUNGSFORS magnetic clip*, H8 cm, stainless steel, 3-p. These magnetic clips give you more worktop space since you can hang things like recipes, shopping lists and pictures.

003.349.23



KUNGSFORS net bag, natural, set of 2. Ideal for food storage. Keeps fruits and vegetables fresh for longer since air circulates through the net bag.

203.728.34



VIVALLA tablet stand, 26×17 cm, bamboo veneer. You can choose to put the stand on your worktop, or to hang it on the wall for more space when cooking. The stand is stable enough for both books and tablets.

104.014.84



HULTARP rail, 60 cm.

| | |
|-----------------------|------------|
| Black | 004.487.69 |
| Nickelplated | 404.628.24 |
| Polished/brass-colour | 504.487.76 |



HULTARP rail, 80 cm.

| | |
|-----------------------|------------|
| Black | 204.487.73 |
| Nickel-plated | 904.444.32 |
| Polished/brass-colour | 304.487.77 |



HULTARP dish drainer.

| | |
|---------------|------------|
| Black | 604.487.66 |
| Nickel-plated | 204.444.35 |



HULTARP container, 14×16 cm.

| | |
|-----------------------------|------------|
| Black | 304.444.54 |
| Green/nickel-plated | 904.444.51 |
| White/polished brass-colour | 104.628.30 |



HULTARP container, black/mesh.

| | |
|----------|------------|
| 14×16 cm | 704.628.27 |
| 31×16 cm | 204.488.34 |



HULTARP hook, 11 cm, 2-p.

| | |
|-----------------------|------------|
| Black | 804.488.31 |
| Nickel-plated | 604.444.57 |
| Polished/brass-colour | 904.488.40 |

**HULTARP hook, 7 cm, 5-p.**

| | |
|-----------------------|------------|
| Black | 104.444.45 |
| Nickel-plated | 504.488.37 |
| Polished/brass-colour | 104.487.78 |

**HULTARP kitchen roll holder.**

| | |
|-----------------------|------------|
| Black | 604.444.38 |
| Nickel-plated | 604.628.37 |
| Polished/brass-colour | 004.628.40 |

**HULTARP magnet knife rack, 38 cm.**

| | |
|-------|------------|
| Black | 804.444.42 |
|-------|------------|

**NEREBY rail, birch.**

| | |
|-------|------------|
| 40 cm | 004.673.00 |
| 60 cm | 904.763.43 |

**NEREBY s-hook, 5-p.**

| | |
|-------|------------|
| White | 204.763.51 |
|-------|------------|

**NEREBY container.**

| | |
|---------|------------|
| Natural | 904.290.97 |
|---------|------------|

**NEREBY wall shelf 40x10 cm.**

| | |
|-------|------------|
| Birch | 904.659.24 |
|-------|------------|

**BEKVÄM spice rack, aspen.**

| | |
|-------|------------|
| Aspen | 204.871.75 |
|-------|------------|



ÖBONÅS container with suction cup. No drilling required thanks to the suction cup with strong grip. Helps free up space on your kitchen worktop while keeping cooking utensils close at hand. The holes at the bottom enable air to circulate and prevent water from collecting.

| | |
|------------|------------|
| Grey-green | 805.155.85 |
|------------|------------|



ÖBONÅS triple hook with suction cup, 7x11 cm. No drilling required thanks to the suction cup with strong grip. Helps free up space on your kitchen worktop while keeping cooking utensils, towels and dish-brushes close at hand.

| | |
|------------|------------|
| Grey-green | 605.155.86 |
|------------|------------|



ÖBONÅS wall shelf with suction cup, 28 cm. No drilling required thanks to the suction cup with strong grip. Helps free up space on your kitchen worktop while keeping cooking utensils close at hand. The holes at the bottom enable air to circulate and prevent water from collecting.

| | |
|------------|------------|
| Grey-green | 004.988.96 |
|------------|------------|



PÄLYCKE clip-on basket, white. Perfect for utilizing more of the area in cabinets and under shelves for storage.

| | |
|-------------|------------|
| 22x26x19 cm | 805.344.33 |
| 36x26x14 cm | 005.344.32 |



PÄLYCKE clip-on basket for cabinet door. Helps you utilize more of the area in your kitchen for storage.

| | |
|-------|------------|
| White | 805.460.68 |
|-------|------------|

Rails and accessories



PÁLYCKE clip-on hook rack. Helps you utilize more of the area in your kitchen for storage.

White 805.411.55



PÁLYCKE clip-on multi-purpose rack. Perfect for utilizing more of the area in cabinets and under shelves for storage.

White 905.344.37



PÁLYCKE clip-on towel rack. Helps you utilize more of the area in your kitchen for storage.

White 505.344.39



SUNNERSTA hook, 5-p.

White 403.037.26



SUNNERSTA kitchen roll holder, white. Max. load 1 kg.

W24.5×D11.5×H4.7 cm 204.439.21
W28.4×11.5×H4.7 cm 305.098.03



SUNNERSTA rail with 4 hooks/2 containers. L60×H14×D13 cm. Including 1 rail, 2 containers and 4 hooks.

White 404.545.60



SUNNERSTA shelf/dish drainer, W36.5×D15 cm. Max. load 4 kg.

White 304.439.30



SUNNERSTA shelf 25, W25×D14×H5 cm. Max. load 2 kg.

White 904.439.27



SKATTÅN container, 12×34 cm. Instead of storing things in drawers, you can have everything from cutlery to accessories close at hand. Hang this container on a hook under ENHET frames to quickly turn the space into practical storage.

Black 304.657.57
White 004.960.05



SKÅDIS container.

White 203.207.98
Black 405.699.24



SKÅDIS container with lid, 3-p.

White 803.359.09
Black 905.699.26



SKÅDIS shelf.

White 003.207.99
Black 805.699.41



SKÅDIS hook rack

White 405.198.87
Black 005.699.35



SKÅDIS storage basket, set of 3.

White 505.177.60
Black 405.699.43



SKÅDIS magazine holder.

White 905.198.80
Black 205.699.39



SKÅDIS clip, 2-p

White 003.216.14
Black 805.699.22



SKÅDIS hook, 5-p.

White 203.208.02
Black 605.699.37



SKÅDIS hook, 2-p.

White 503.356.18
Black 905.699.31

**SKÅDIS elastic cord, 3-p.**

| | |
|-------|------------|
| Grey | 403.216.31 |
| Black | 505.699.28 |

**SKÅDIS hook, 3-p.**

| | |
|-------|------------|
| Black | 505.699.33 |
|-------|------------|

**SKÅDIS tool holder.**

| | |
|-------|------------|
| Black | 905.699.45 |
|-------|------------|

**SKÅDIS hook, 5-p.**

| | |
|-------|------------|
| White | 205.198.88 |
|-------|------------|

Protectors

The drawer mats and shelf protectors dampen sounds and protects the shelves and drawers from scratches. Also the lock for kitchen drawers and cabinet is an easy

way to make your kitchen a safer and more secure place for your children.

**UPPDATERA drawer mat, grey.** Dampens sounds and protects drawers and shelves against scratching.

| | |
|-------|------------|
| 48 cm | 505.498.36 |
| 96 cm | 405.510.52 |

**VARIERA drawer mat.** Dampens sounds and protects drawers and shelves against scratching.

| | |
|-------------|------------|
| Transparent | 800.128.53 |
| White | 002.388.65 |

**UTRUSTA lock kitchen drawers/cabinets, 4-p.** Children are curious and can use your kitchen in ways you can never imagine. With this lock, you can easily stop them from accessing cabinets and drawers – without limiting their natural curiosity.

| | |
|-------|------------|
| Black | 804.536.10 |
|-------|------------|

Step stools

Sometimes all you need is a little boost. Our step stools put the top shelves within reach.

**GRUBBAN step stool, W40×D45×H43 cm.** Max load 100 kg.

| | |
|-------------|------------|
| Black/birch | 504.729.50 |
| White/birch | 304.424.07 |

**BEKVÅM step stool, W43×D39×H50 cm.** Max load 100 kg.

| | |
|--------|------------|
| Aspen | 102.255.89 |
| Black | 404.638.52 |
| White | 401.788.88 |
| Acacia | 705.695.45 |

**BEKVÅM stepladder, 3 steps, H63 cm.** Max. load 100 kg.

| | |
|-------|------------|
| Beech | 901.904.11 |
| Black | 902.198.29 |

Trolleys

A trolley is a quick, easy and affordable solution giving you more flexible storage space.



RÅSKOG trolley, L35×W45×78 cm. The trolley is easy to adapt to suit what you want to store in it because the middle shelf is adjustable.

| | |
|--------|------------|
| Black | 903.339.76 |
| White | 203.829.32 |
| Yellow | 504.966.49 |



NISSAFORS trolley, L50.5×W30×H83 cm. The sturdy construction and four castors make it easy for you to move the trolley and use it wherever you like. It even fits in tight spaces because of its small size.

| | |
|------------|------------|
| Black | 203.997.77 |
| White | 404.657.33 |
| Pale green | 905.319.57 |



BEKVÄM kitchen trolley, L58×W50×H85 cm, birch. Provides mobile extra storage, utility and work space.

302.403.48



FLYTTA kitchen trolley, L98×W57×H86 cm, stainless steel. Lockable castors for high stability.

000.584.87



FÖRHÖJA kitchen trolley, L100×W43×H90 cm, birch. Open storage with space for 9 bottles on each shelf.

800.359.20



KUNGSFORS kitchen trolley, L60×W40×H90 cm, stainless steel. May also be used in high humidity areas.

803.349.24



STENSTORP kitchen trolley, W43×H90 cm. Min. depth 45 cm, max. depth 62 cm. 2 adjustable shelves in solid oak with grooves to keep bottles in place.

White/oak 402.019.16

Containers

With clever containers and boxes inside drawers and cabinets as well as on the wall, you'll keep things organised and easy to find. A helpful tip is to keep

things close to where they are used as this enables a smooth workflow.



RISATORP basket, L25×W26×H18 cm. This basket is handy for storing and organising smaller things – and bringing them with you when setting the table or wherever needed.

| | |
|--------------|------------|
| White | 902.816.18 |
| Grey-beige | 105.307.49 |
| Light yellow | 705.573.97 |



KUNGSFORS container*, W24×D12×H26.5 cm. The container has a removable tray underneath that collects water from cutlery and other items that you store and keeps them dry.

Stainless steel 603.349.20



KUNGSFORS container, 12.0×26.5 cm. Helps free up space on your worktop while keeping cooking utensils close at hand.

Stainless steel 003.349.18



UPPDATERA cutlery caddy, W12×L12×H24.3 cm. An attractive cutlery stand that looks just as good inside a drawer as out in the open on a shelf or kitchen worktop.

Anthracite 404.331.05
Pale green 805.375.25



SUNNERSTA container, W12×D11×H13 cm. Fits SUNNERSTA rail and mini-kitchen, adjustable rack, rail, trolley and mini-kitchen.

| | |
|--------------|------------|
| White | 503.037.35 |
| Light pink | 605.561.81 |
| Light yellow | 105.561.74 |
| Pale green | 005.561.79 |



SKATTÅN container, 12×34 cm. Instead of storing things in drawers, you can have everything from cutlery to accessories close at hand. Hang this container on a hook under ENHET frames to quickly turn the space into practical storage.

Black 304.657.57
White 004.960.05



UPPDATERA box, 24×17 cm. This multi-use box with matt surface is handy for storing and organising smaller things – and bringing them with you wherever needed. Keep it in a cabinet, on a worktop or anywhere you want at home.

Anthracite 805.040.49
Green 805.040.54
Light pink 105.040.57



NISSAFORS
Trolley, 50,5×30×83 cm,
black. 203.997.77

Guarantees

IKEA kitchens are made to stand up to the rough and tumble of everyday life in your home. Day in, day out, year after year. In fact, we're so confident of the quality of your products that we offer generous guarantees on our kitchens, worktops, appliances and taps – all for free.

METHOD kitchen system

25-year guarantee

What products are covered under this guarantee?

This guarantee applies to domestic kitchen use only and covers defects in materials and workmanship.

This guarantee covers all of the following parts of the METHOD kitchen system: • Cabinets (except for TORNVIKEN and VADHOLMA) • Fronts • UTRUSTA hinges • MAXIMERA fully extending drawers • UTRUSTA shelves • Plinths • Legs • Cover panels • Deco strips/mouldings • Worktops • Wall panels • Sinks (except FYNDIG) • EXCEPTIONELL fully-extending push-to-open drawers.

Products not covered under this guarantee:

FÖRVARA drawers, UTRUSTA wire baskets, UTRUSTA dish drainer, TORNVIKEN, TUTEMO, VADHOLMA, ÅSPINGE kitchenette (except FYNDIG sink) and ÖNNERUP kitchenette (except FYNDIG sink) have a 10-year guarantee. UTRUSTA push opener, electrical has a 5-year guarantee.

Products not covered under 25-, 10- or 5-years guarantee: Knobs, handles, KNOXHULT kitchen, SUNNERSTA kitchen and FYNDIG sink.

KNOXHULT and SUNNERSTA kitchens have a 2-year guarantee.

What will IKEA do to correct the problem?

IKEA will examine the product and decide, at its sole discretion, if it is covered under this guarantee. If considered covered, IKEA through its own service operations, will then, at its sole discretion, replace it with the same or a comparable product. If the item is no longer sold by IKEA, IKEA will provide an appropriate replacement. It is IKEA that determines, at its sole discretion, what constitutes an appropriate replacement.

Conditions for the guarantees

The guarantees are valid from the date of purchase at IKEA or date of delivery if later. The original purchase receipt is required as proof of purchase.

Exclusions

The guarantees do not apply to products that have been stored or assembled incorrectly, used inappropriately, abused, misused, altered, or cleaned with wrong cleaning methods or wrong cleaning products. The guarantees do not cover normal wear and tear, cuts or scratches, or damage caused by impacts or accidents. The guarantees do not apply if products have been placed outdoors or in a humid environment or if the products have been used for non-domestic purposes (unless otherwise stated). The guarantees do not cover consequential or incidental damages. Follow our assembly instructions and care instructions carefully.

This guarantee does not apply if the products have been used for public use, outdoors or in a corrosive environment.

For customers in the US only: some states do not allow the limitation or exclusion of incidental or consequential damage,

25

The METHOD kitchen system and worktops have a 25-year guarantee.

10

The ENHET kitchen and kitchen mixer taps have a 10-year guarantee.

so this limitation or exclusion may not apply to you.

Care instructions

To be able to rely on this guarantee you need to follow the specific care instructions for every product. You will find all care instructions in the IKEA stores and on the IKEA web site: www.IKEA.co.uk

General legal rights:

This guarantee gives you specific legal rights. This guarantee does not, in any way, affect the rights given to you by law.

How to reach us if you need service:

Contact your local IKEA store. You will find the address and phone number in the IKEA catalogue or at www.IKEA.co.uk Save your sales receipt as proof of purchase. Proof of purchase is required for the guarantees to be valid.

For more information, see the IKEA Kitchen Guarantee brochure.

ENHET kitchen system

10-year guarantee

What products are covered under this guarantee:

This guarantee applies to domestic kitchen use only and covers defects in materials and workmanship.

This guarantee covers all the following parts of ENHET kitchen system: • Cabinets • Open frames • Fronts • Hinges • Drawers • Shelves • Legs • Accessories (swivel shelf, hanging shelf insert, rail for hooks and hooks).

What will IKEA do to correct the problem?

IKEA will examine the product and decide, at its sole discretion, if it is covered under this guarantee. If considered covered, IKEA through its own service operations, will then, at its sole discretion, replace it with the same or a comparable product. If the item is no longer sold by IKEA, IKEA will provide an appropriate replacement. It is IKEA that determines, at its sole discretion, what constitutes an appropriate replacement.

Conditions for the guarantees

The guarantees are valid from the date of purchase at IKEA or date of delivery if later. The original purchase receipt is required as proof of purchase.

Exclusions

The guarantees do not apply to products that have been stored or assembled incorrectly, used inappropriately, abused, misused, altered, or cleaned with wrong cleaning methods or wrong cleaning products. The guarantees do not cover normal wear and tear, cuts or scratches, or damage caused by impacts or accidents. The guarantees do not apply if products have been placed outdoors or in a humid environment or if the products have been used for non-domestic purposes (unless otherwise stated). The guarantees do not cover consequential or incidental damages. Follow our assembly instructions and care instructions carefully.

This guarantee does not apply if the products have been used for public use, outdoors or in a corrosive environment.

For customers in the US only: some states do not allow the limitation or exclusion of incidental or consequential damage, so this limitation or exclusion may not apply to you.

Care instructions

To be able to rely on this guarantee you need to follow the specific care instructions for every product. You will find all care instructions in the IKEA stores and on the IKEA web site: www.IKEA.co.uk

General legal rights:

This guarantee gives you specific legal rights. This guarantee does not, in any way, affect the rights given to you by law.

How to reach us if you need service:

Contact your local IKEA store. You will find the address and phone number in the IKEA catalogue or at www.IKEA.co.uk. Save your sales receipt as proof of purchase. Proof of purchase is required for the guarantees to be valid.

For more information, see the IKEA Kitchen Guarantee brochure.

Kitchen mixer taps

10-year guarantee

What is covered under this Guarantee?

The 10-year Guarantee is valid for all kitchen mixer taps at IKEA. This Guarantee applies to domestic use only and covers defects in material and workmanship in all kitchen mixer taps.

What is not covered under this Guarantee?

This Guarantee does not cover normal wear and tear, cuts or scratches, or damage caused by impacts, accidents or waterborne debris. See also general conditions on page 00.

What will IKEA do to correct the problem?

IKEA will examine the product and decide, at its sole discretion, if it is covered under this Guarantee. If considered covered, IKEA through its own service operations, will then, at its sole discretion, replace it with the same or a comparable product. If the item is no longer sold by IKEA, IKEA will provide an appropriate replacement. It is IKEA that determines, at its sole discretion, what constitutes an appropriate replacement.

Conditions for the Guarantees

The Guarantees are valid from the date of purchase at IKEA. The original purchase receipt is required as proof of purchase.

Exclusions

The Guarantees do not apply to products that have been stored or assembled incorrectly, used inappropriately, abused, misused, altered, or cleaned with wrong cleaning methods or wrong cleaning products. This Guarantee does not cover normal wear and tear, cuts or scratches, or damage caused by impacts, accidents or waterborne debris. It also does not apply to the filter/aerator which should be cleaned regularly or replaced when worn out. Follow our assembly instructions and care instructions carefully.

This Guarantee does not apply if the products have been used for public use, outdoors or in a corrosive environment. It also does not cover accidental damage.

For customers in the US only: some states do not allow the limitation or exclusion of incidental or consequential damage, so this limitation or exclusion may not apply to you.

Care instructions

To be able to rely on this Guarantee you need to follow the specific care instructions for every product. You will find all care instructions in the IKEA stores and on the IKEA web site: www.IKEA.co.uk

General legal rights:

This Guarantee gives you specific legal rights. This Guarantee does not, in any way, affect the rights given to you by law.

How to reach us if you need service:

Contact your local IKEA store. You will find the address and phone number in the IKEA catalogue or at www.IKEA.co.uk. Save your sales receipt as proof of purchase. Proof of purchase is required for the Guarantees to be valid.

Worktops

25-year guarantee

What products are covered under this Guarantee?

This Guarantee applies to domestic kitchen use only. All worktops. • Sinks except FYNDIG

Products not covered under this guarantee

FYNDIG sink.

From alterations performed after initial installation.

The Guarantee is effective only if the owner of the worktop is the occupant of an indoor single-family residence.

Steps to buying an IKEA kitchen

IKEA kitchens are designed so that you can install them yourself. To the right are some steps to ensure the process goes well for you. Should you have any questions, don't hesitate to talk to our kitchen experts at your local IKEA store or visit us at: [IKEA.co.uk](https://www.ikea.co.uk).



Find your style

It's time to dream a little, look at some ideas, consider your needs and decide what an ideal kitchen means for you. This buying guide is made to give you an overview of some of the possibilities but there is so much more. You can find more ideas and inspiration on our website, in the kitchen brochure or by visiting your local IKEA store.



Measure

When measuring it's important to take your time and get your measurements correct. This will form the foundation of all your planning. To see exactly what to measure, pick up a copy of the planning guide Your new IKEA kitchen at your local IKEA store or at [IKEA.co.uk](https://www.ikea.co.uk).

→ **We can do it for you**
To learn more about our
Measuring services see [page 04](#)

More tools and guidance



Appliances buying guide

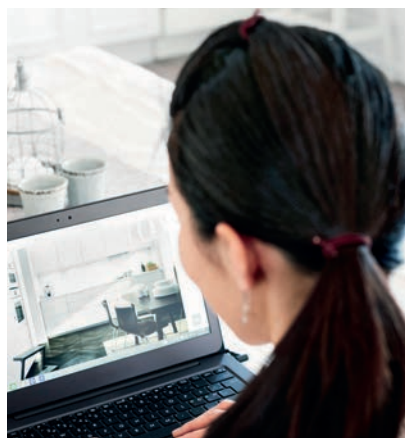
This buying guide is filled with appliances developed to match perfectly with our kitchens. Inside you'll find detailed information about styles, functions and prices. Pick up a copy at your local IKEA store, or flip it through online at [IKEA.co.uk](https://www.ikea.co.uk)



Plan

Planning your kitchen is when your dreams and ideas take shape. Use the online IKEA Home Planner tool to start planning your kitchen. Or, if you would like some advice we have kitchen planners ready in the store to help.

→ **We can do it for you**
To learn more about our Kitchen planning services, view [page 04](#)



Order

When you're satisfied with your planning, visit your local IKEA store and talk to our kitchen experts. They will go over your kitchen plan with you, and help you with anything you're not sure about. When you are ready you can order and we can help with delivery.

→ **We can do it for you**
To learn more about our Picking with Delivery service, see [page 04](#)



Install

IKEA kitchens are designed to be installed by you, but we're here to offer as much help as you feel you need. You can start by picking up the kitchen installation guide from the store which gives step-by-step instructions on installing your kitchen.

→ **We can do it for you**
To learn more about our Kitchen installation service, view [page 04](#)



Planning guide

Our kitchen planning guide is your guide to measuring, ordering and installing your new IKEA kitchen. Pick it up at your local IKEA store or check it out at IKEA.co.uk



The IKEA Kitchen planner

Want a kitchen that is perfect for your unique space? Design the METOD kitchen of your dreams in a 3D environment. Our free kitchen planner, paired with your imagination, can help bring your ideal kitchen to life. We can show you a realistic picture of how to create a space that works for you. Print out your drawings and product list at home, or save to the IKEA website. At the IKEA store you can discuss your design and get lots of advice and guidance from our kitchen experts. Learn more at IKEA.co.uk



ENHET kitchen configurator

You can rely on the ENHET kitchen configurator to make your purchase as fast and smooth as possible. After you have chosen your favourite ENHET kitchen, you can use the kitchen configurator online to customise it and style it to suit you even more. When you are happy with the result, just add appliances and lighting and you are ready to go.

